

Children's Social Care & Wellbeing Commissioning

What is Commissioning (1)?

www.surreycc.gov.uk

Making Surrey a better place

Best Outcomes
For CYP / Family

Impact
What difference
does it make?

Supporting Area and
Countywide Teams

Value for Money
best value

Working in Partnership

Health (CCG's and community Health Providers)
Schools and Learning / Youth Support Services
Public Health and Adults Services
Voluntary, Community and Faith Sector (VCFS)
Parent/Carer Groups
Children and Young People

What is Commissioning (2)?

“Commissioning is the process by which local authorities decide how to spend their money to get the best possible outcomes for individuals and communities, based on local needs.”

- Strategic
- Operational
- Individual

Did you know?

www.surreycc.gov.uk



KEY FACTS

10,500 children and young people were registered with a disability in Surrey 2013

The borough of Reigate & Banstead had the highest estimate of children and young people with a specific mental health condition in 2012 (1349 children and young people)

60% of looked after children are reported to have Emotional Health and Well-Being problems

77 Unaccompanied Asylum Seeking Children placed in foster care in December 2013 (10% placed within Surrey)

In May 2014, Surrey had 780 Looked After Children under 18-years (average of 834)

163 of these children (21%) were placed out of county, more than 20-miles from their originating home

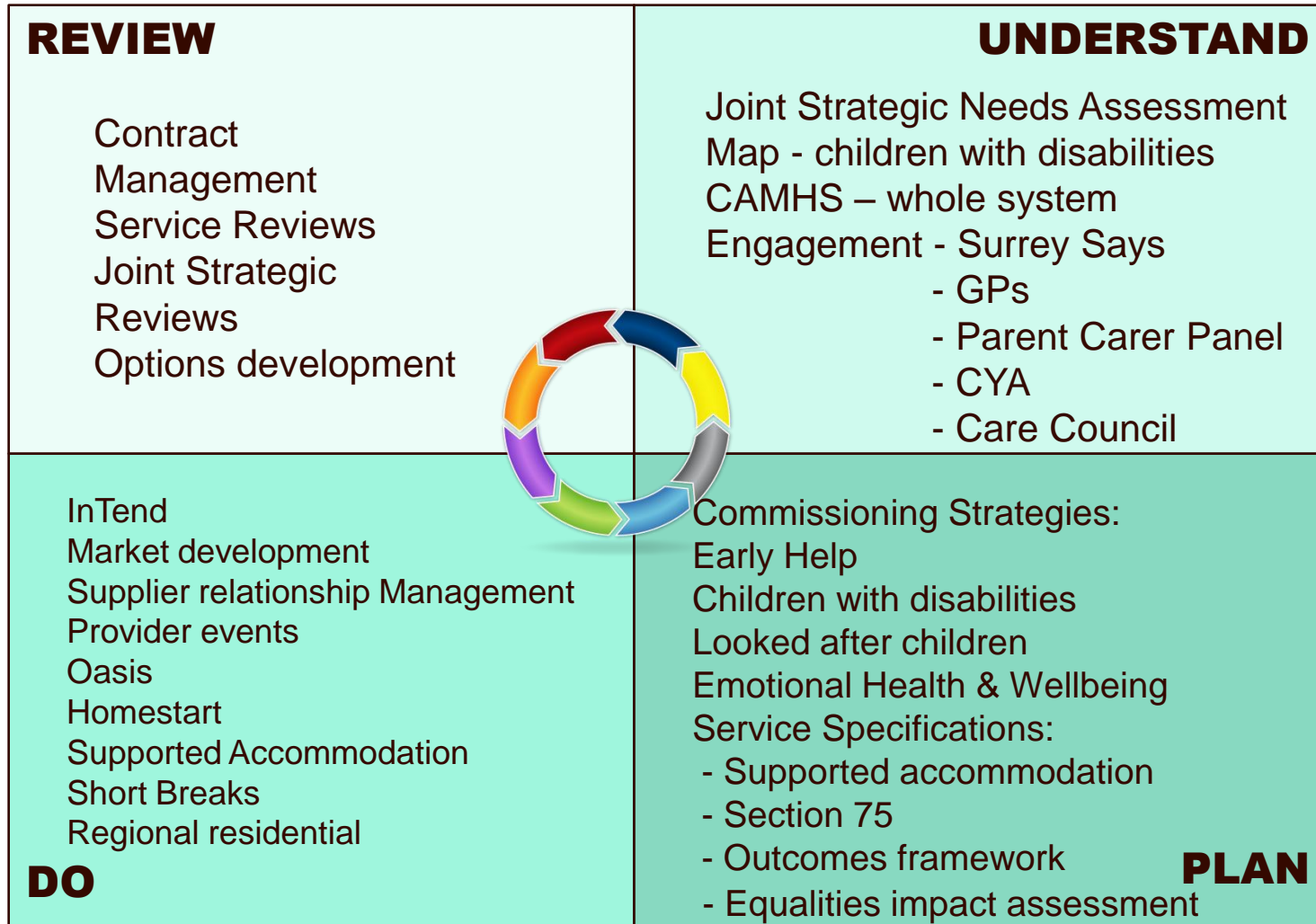
Surrey had budgets of £8m and £7m for in-house and independent sector foster care for 2013/14

549 domestic abuse referrals were received by Surrey Children's Services in June 2013

23% of referrals to the Catch-22 Substance Misuse Service are looked after children (27% of which have parents who are substance mis-users)

£840 was the average cost of a hair strand test (2013)

Commissioning Cycle

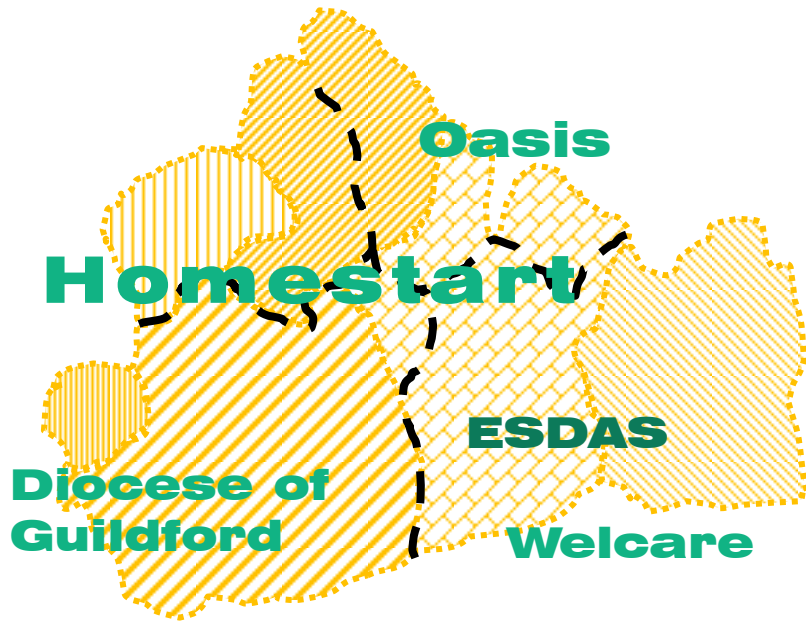


Early Help and Improving Resilience

www.surreycc.gov.uk



Making Surrey a better place



Parental mild
Mental Health

Domestic Abuse
developmental work

Substance Misuse
Catch 22

Good
Parenting

Ofsted
inspections

Early Help
Multi agency offer
(support provider, VCFS)

Supported with YSS
Accommodation

*“Improve the emotional resilience and mental health of children and young people
in Surrey and keep them well.”*

CAMHS Joint Commissioning Strategy

- **needs assessment refresh**

age, issues for social care

- **services commissioned**

- **market development**

BOND, pilot, VCFS links and schools

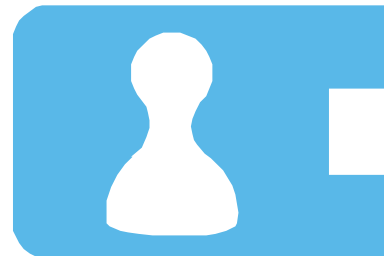
- **preparation for joint tender**

targeted and specialist (CAMHS)

- **social innovation bid**



Surrey Child and Adolescent
Mental Health Services
www.surrey-camhs.org.uk



Children with Disabilities (1)

Outcomes

Children and young people are supported to reach their full potential.

Children and young people are happy and have experience of a range of fun, enjoyable and age appropriate activities.

The physical and emotional health needs of children with disabilities are met.

Children and young people feel safe, secure and are protected from harm, abuse and bullying.

Projects

- Short Breaks Retender
- Joint Strategic Review
- Commissioning Strategy
- Needs Assessment
- Market Position Statement
- Continuing Healthcare Review
- Therapies
- Partnership Work
- Involving parents & young people

FAMILY VOICE



Children with Disabilities (2)

Issues	Projects
Children & Families Act 2014	<ul style="list-style-type: none">● Duty of local authorities and health to work more closely● Education Health Care plans● Preparing for the transition to adulthood● Local offer● Personal budgets
Coordination across children's/adult social care, health and education	
Cultural diversity Eligibility Funding	

“We want the children and young people we look after to grow up having the same opportunities as their peers. We will have achieved our aims when our children leave our care with the skills to live successful and fulfilling lives”.

Commissioning Strategy

placements



Independent Sector

- fostering

- **regional collaborative**
- **block contract**

- residential

- supported accommodation

health assessments

For more information contact: -

- **Ian Banner – Head of Children’s Social Care and Wellbeing Commissioning**
- **Sam Morrison and Jo Lee – Senior Commissioners**
- **Sam Boyd– Early Help**
- **Karina Ajaya – Emotional Health and Wellbeing**
- **Holly Beaman – Children and Young People with Disabilities**
- **Elaine Malloy – Looked After Children**