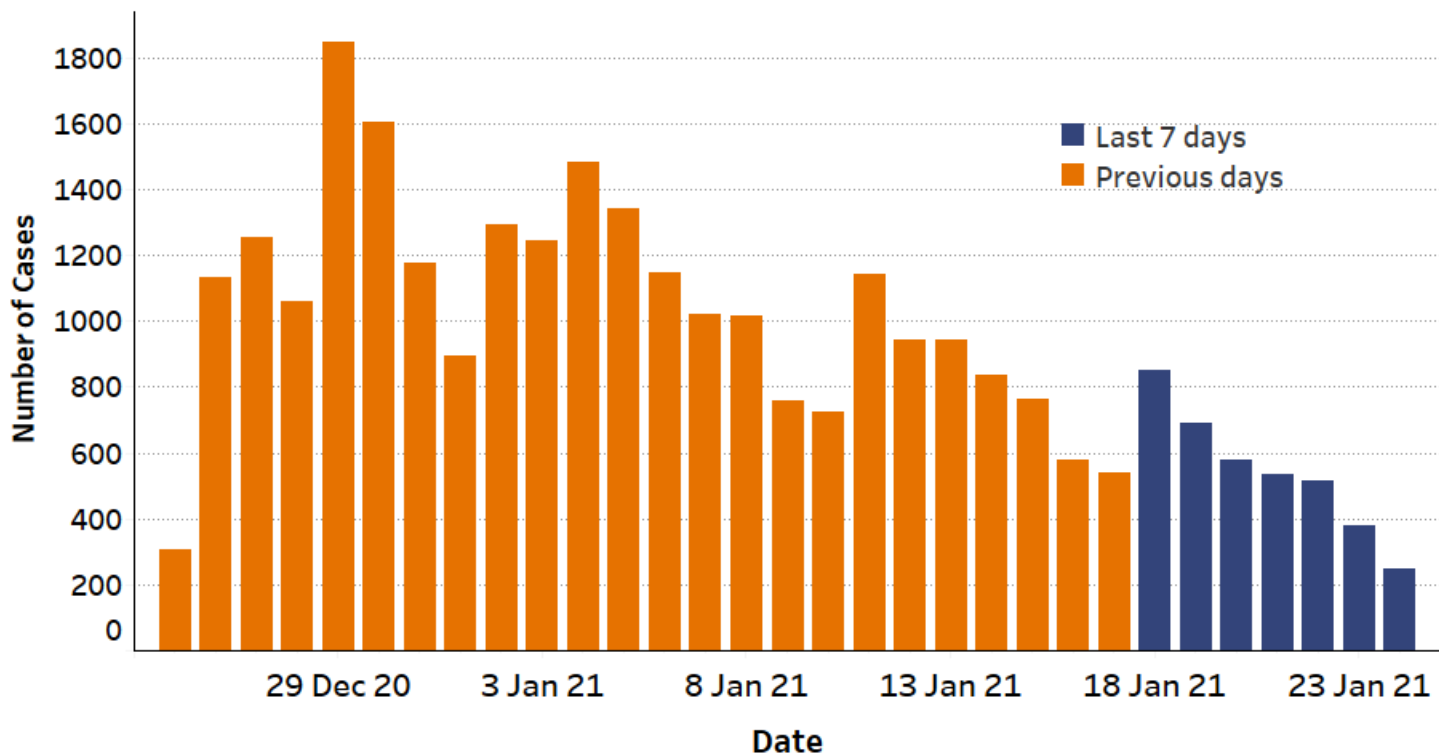


# Surrey COVID-19 Cases

Publication Date:  
Friday 29 January 2021



## Daily Cases



Change from previous week\*\*

New cases in last 7 days

Rate for the last 7 days\*



3,794

317.2

Data shown for time period Monday 18 January 2021 to Sunday 24 January 2021

\*Rate represents number of cases per 100,000 population for the last 7 days

\*\*If there is an increase or decrease in cases that is less than 10% compared to the previous 7 days (11 January - 17 January) a grey arrow will indicate that the rate may have plateaued, but is not showing a significant rise or drop.

Change**		Cases (7 days)	Rate (7 days)
↓	Spelthorne	428	428.7
↓	Reigate and Banstead	635	426.9
↓	Woking	392	388.9
↓	Surrey Heath	321	359.4
↓	Tandridge	316	358.6
↓	Epsom and Ewell	267	331.2
↓	Mole Valley	242	277.4
↓	Guildford	400	268.5
↓	Runnymede	211	236.0
↓	Elmbridge	318	232.5
↓	Waverley	264	209.0
↓	<b>Surrey</b>	<b>3,794</b>	<b>317.2</b>
↓	<b>South East</b>	<b>30,753</b>	<b>335.0</b>
↓	<b>England</b>	<b>199,093</b>	<b>353.7</b>

All data is publicly available. Data is shown by specimen date - reporting delays mean data can be incomplete for the most recent days. For this reason the data shown is for the seven-day period ending five days prior to the publication date. The rate is calculated daily by Surrey County Council Public Health data intelligence team using the ONS 2019 mid-year population estimates. For more detail please refer to the Surrey COVID Intelligence Summary at [www.surreycc.gov.uk/covidcases](http://www.surreycc.gov.uk/covidcases) and [coronavirus.data.gov.uk](http://coronavirus.data.gov.uk)

# Surrey Daily COVID Report

Publication Date: Friday 29 January 2021

All data is publicly available. Data is shown by Specimen Date and since these are incomplete for the most recent days, the period shown is for the seven day period ending five days prior to the publication date.

The rate is calculated daily by Surrey County Council Public Health Data Intelligence team using the ONS 2019 mid-year population estimates.

For more detail please refer to the [Surrey COVID Intelligence Summary](#) or the [Government Coronavirus Dashboard](#)

Date	Case
25 December 2020	306
26 December 2020	1,132
27 December 2020	1,253
28 December 2020	1,060
29 December 2020	1,848
30 December 2020	1,604
31 December 2020	1,175
1 January 2021	895
2 January 2021	1,296
3 January 2021	1,243
4 January 2021	1,482
5 January 2021	1,344
6 January 2021	1,148
7 January 2021	1,022
8 January 2021	1,016
9 January 2021	758
10 January 2021	727
11 January 2021	1,144
12 January 2021	942
13 January 2021	943
14 January 2021	836
15 January 2021	765
16 January 2021	578
17 January 2021	539
18 January 2021	851
19 January 2021	689
20 January 2021	579
21 January 2021	537
22 January 2021	514
23 January 2021	377
24 January 2021	247

Direction of change compared to previous 7 days (11 Jan – 17 Jan)	Area Name	Cases (7 days)	Rate (7 days)*
Decrease	Surrey	3,794	317.2

Data shown for time period Monday 18 January 2021 to Sunday 24 January 2021

\*Rate represents number of cases per 100,000 population for the last 7 days

Direction of change compared to previous 7 days (11 Jan – 17 Jan)	Area Name	Cases (7 days)	Rate (7 days)*
Decrease	Spelthorne	428	428.7
Decrease	Reigate and Banstead	635	426.9
Decrease	Woking	392	388.9
Decrease	Surrey Heath	321	359.4
Decrease	Tandridge	316	358.6
Decrease	Epsom and Ewell	267	331.2
Decrease	Mole Valley	242	277.4
Decrease	Guildford	400	268.5
Decrease	Runnymede	211	236.0
Decrease	Elmbridge	318	232.5
Decrease	Waverley	264	209.0
Decrease	Surrey	3,794	317.2
Decrease	South East	30,753	335.0
Decrease	England	199,093	353.7