

KEY

- PROPOSED NO WAITING AT ANY TIME
- EXISTING WAITING, LOADING AND PARKING RESTRICTIONS (WITH OR WITHOUT SYMBOLS)

Notes

Rev.	Description	Drwn	Sig.	Date	Chkd	Sig.	Date	Appr	Sig.	Date
A	RESTRICTIONS AMENDED	CAH	CAH	02.16	JAR	JAR	02.16	RH	RH	02.16
B	RESTRICTIONS AMENDED	CAH	CAH	09.18	PW	PW	09.18	DC	DC	09.18
C	RESTRICTIONS AMENDED	CAH	CAH	10.19	PW	PW	10.19	DC	DC	10.19

North Point

Based upon the Ordnance Survey mapping with the permission of the Controller of Her Majesty's Stationery Office © Crown copyright. Unauthorised reproduction infringes Crown copyright and may lead to prosecution or civil proceedings.
Surrey County Council LA 078872 1996.

Drawn by	CAH	Sig.	CAH	Date	07.14
Checked by	JAR	Sig.	JAR	Date	07.14
Approved by	RH	Sig.	RH	Date	07.14

Project
**RUNNYMEDE DPE
ADDLESTONE DIVISION**

Drawing
**IMPLEMENTED TRAFFIC ORDERS
ADDLESTONE**

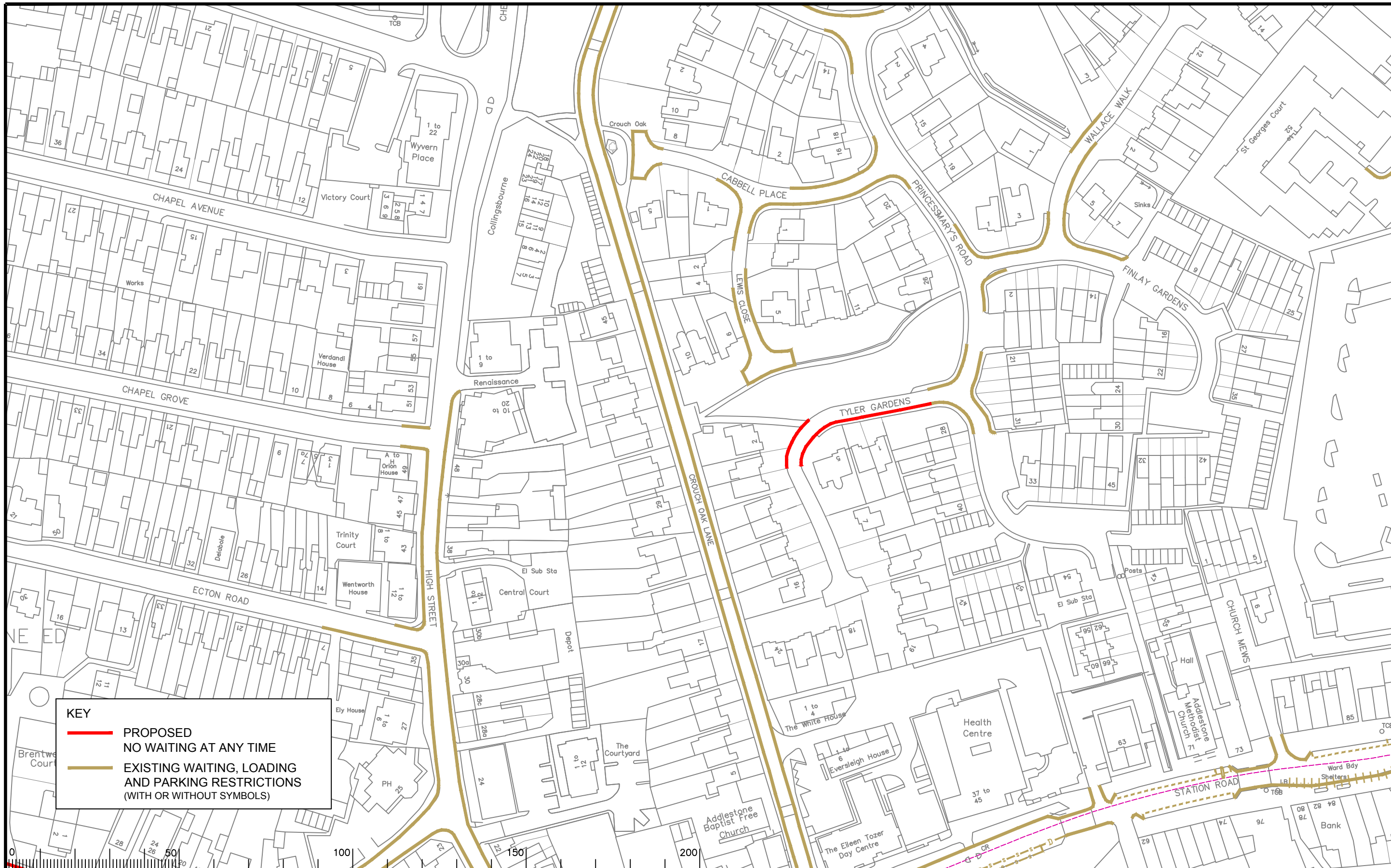
SHEET OF

Project No.
3282

Contract Sheet No.
3282_53

Rev.
C

Classification
PROPOSAL



KEY

- PROPOSED NO WAITING AT ANY TIME
- EXISTING WAITING, LOADING AND PARKING RESTRICTIONS (WITH OR WITHOUT SYMBOLS)

Notes

Rev.	Description	Drwn	Sig.	Date	Chkd	Sig.	Date	Appr	Sig.	Date
A	RESTRICTIONS AMENDED	CAH	CAH	02.16	JAR	JAR	02.16	RH	RH	02.16
B	RESTRICTIONS AMENDED	CAH	CAH	07.17	JAR	JAR	07.17	DC	DC	07.17
C	RESTRICTIONS AMENDED	CAH	CAH	09.18	PW	PW	09.18	DC	DC	09.18
D	RESTRICTIONS AMENDED	CAH	CAH	10.19	PW	PW	10.19	DC	DC	10.19

Project			
Drawn by	CAH	Sig.	CAH
Checked by	JAR	Sig.	JAR
Approved by	RH	Sig.	RH



Based upon the Ordnance Survey mapping with the permission of the Controller of Her Majesty's Stationery Office. Crown copyright. Unauthorised reproduction infringes Crown copyright and may lead to prosecution or civil proceedings. Surrey County Council LA 076872 1996.

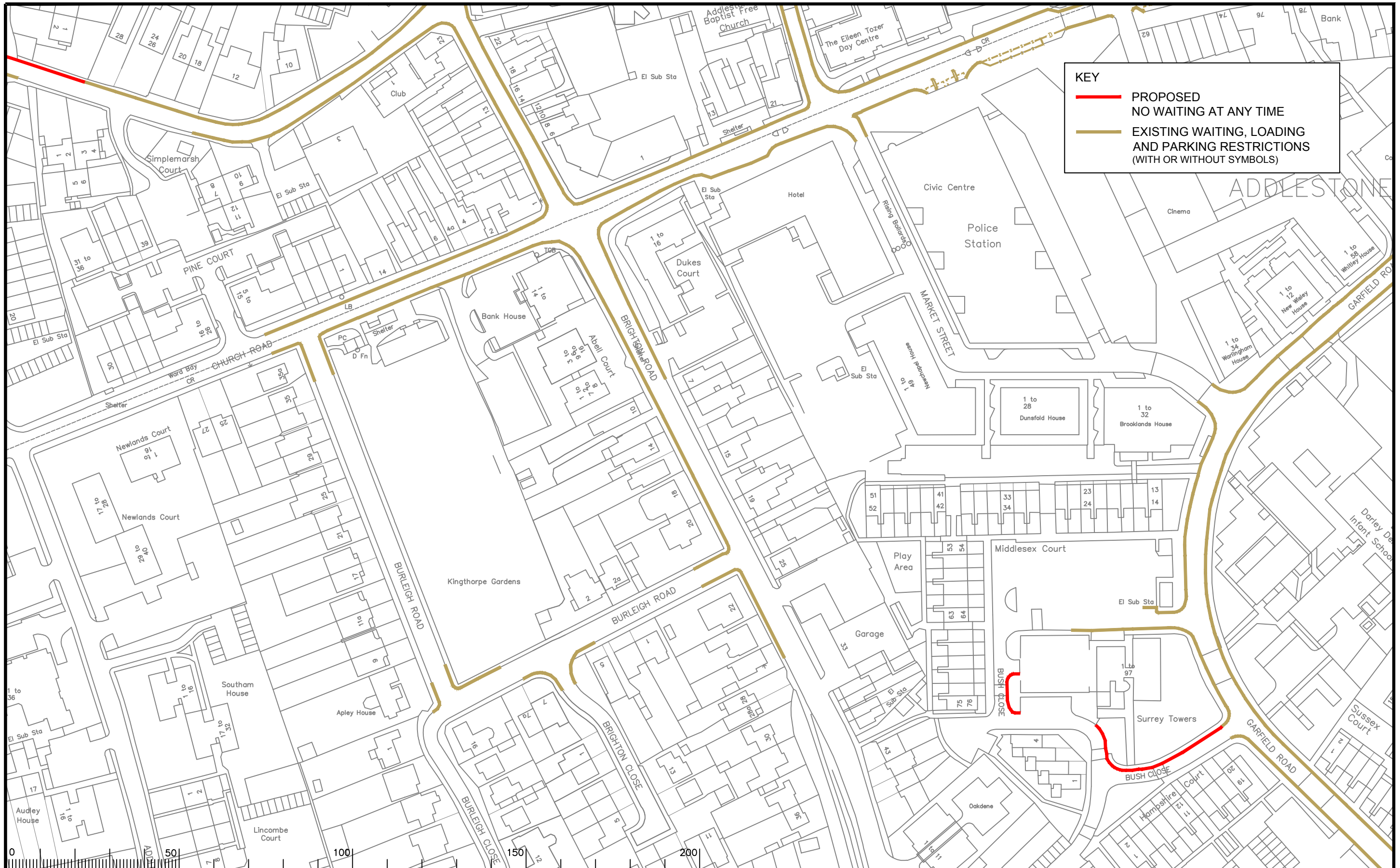
**RUNNYMEDE DPE
ADDLESTONE DIVISION**

**IMPLEMENTED TRAFFIC ORDERS
ADDLESTONE**

SHEET OF



Project No.	3282/RUN
Contract Sheet No.	
Drawing No.	3282_55
Rev.	D
Classification	PROPOSAL



KEY

- PROPOSED NO WAITING AT ANY TIME
- EXISTING WAITING, LOADING AND PARKING RESTRICTIONS (WITH OR WITHOUT SYMBOLS)

Notes

Rev.	Description	Drwn	Sig.	Date	Chkd	Sig.	Date	Appr	Sig.	Date
A	RESTRICTIONS AMENDED	CAH	CAH	02.16	JAR	JAR	02.16	RH	RH	02.16
B	RESTRICTIONS AMENDED	CAH	CAH	09.18	PW	PW	09.18	DC	DC	09.18
C	RESTRICTIONS AMENDED	CAH	CAH	10.19	PW	PW	10.19	DC	DC	10.19

North Point

Based upon the Ordnance Survey mapping with the permission of the Controller of Her Majesty's Stationery Office. Crown copyright. Unauthorised reproduction infringes Crown copyright and may lead to prosecution or civil proceedings. Surrey County Council LA 076872 1996.

Drawn by: CAH, Sig. CAH, Date 04.16
 Checked by: JAR, Sig. JAR, Date 04.16
 Approved by: RH, Sig. RH, Date 04.16

Project

**RUNNYMEDE DPE
ADDLESTONE DIVISION**

**IMPLEMENTED TRAFFIC ORDERS
ADDLESTONE**

SHEET OF

Project No. 3282/RUN

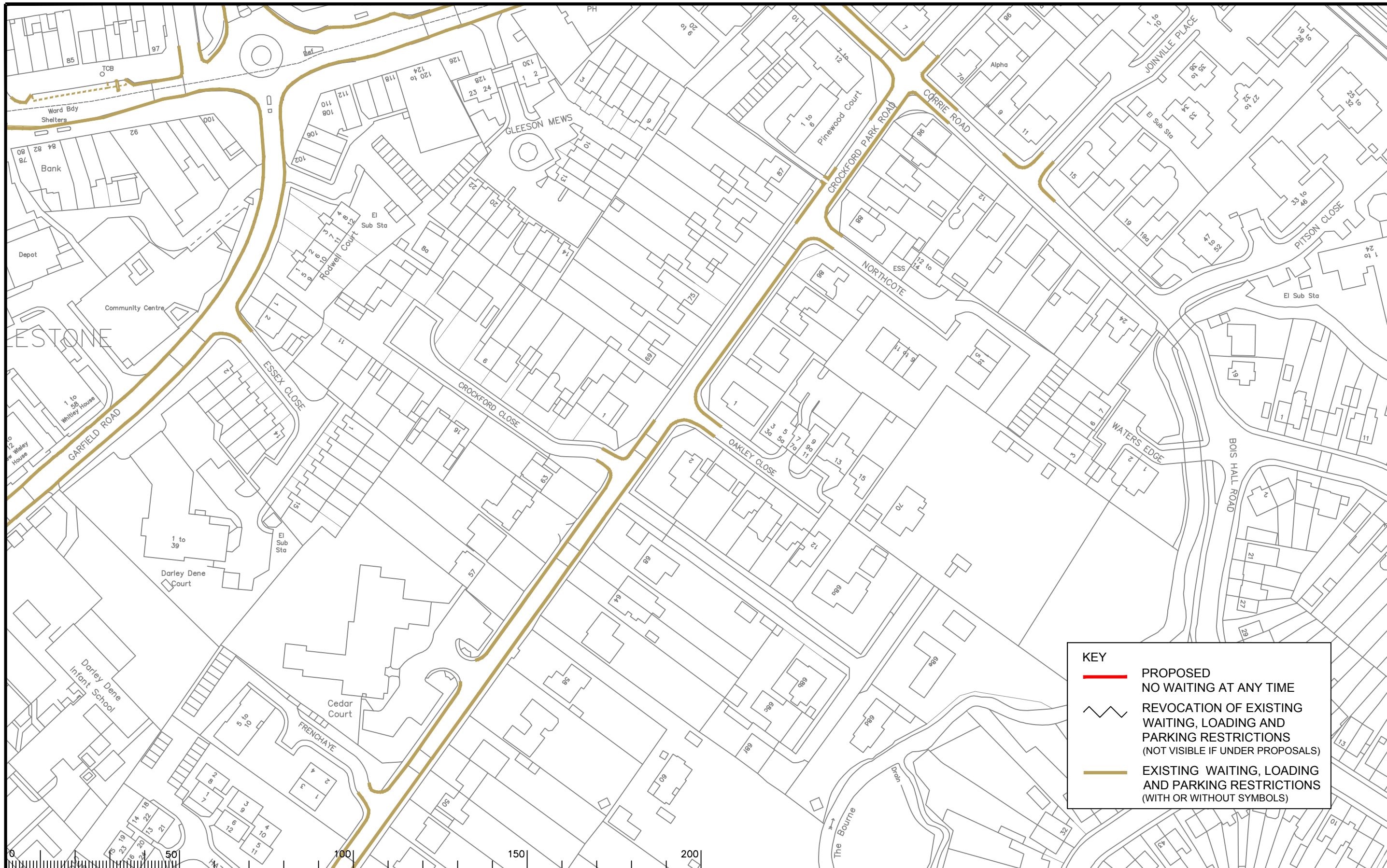
Contract Sheet No.

Drawing No. 3282_56




Rev. C

SURREY COUNTY COUNCIL

AS MADE



KEY

-  PROPOSED NO WAITING AT ANY TIME
-  REVOCATION OF EXISTING WAITING, LOADING AND PARKING RESTRICTIONS (NOT VISIBLE IF UNDER PROPOSALS)
-  EXISTING WAITING, LOADING AND PARKING RESTRICTIONS (WITH OR WITHOUT SYMBOLS)

Notes

Rev.	Description	Drwn	Sig.	Date	Chkd	Sig.	Date	Appr	Sig.	Date
A	RESTRICTIONS AMENDED	CAH	CAH	10.19	PW	PW	10.19	DC	DC	10.19

North Point

Based upon the Ordnance Survey mapping with the permission of the Controller of Her Majesty's Stationery Office. Crown copyright. Unauthorised reproduction infringes Crown copyright and may lead to prosecution or civil proceedings. Surrey County Council LA 078872 1996.

Drawn by: CAH, Sig. CAH, Date 04.16
 Checked by: JAR, Sig. JAR, Date 04.16
 Approved by: RH, Sig. RH, Date 04.16

Project: RUNNYMEDE DPE
ADDLESTONE DIVISION

Drawing: IMPLEMENTED TRAFFIC ORDERS
ADDLESTONE

SHEET OF


Project No. 3282/RUN

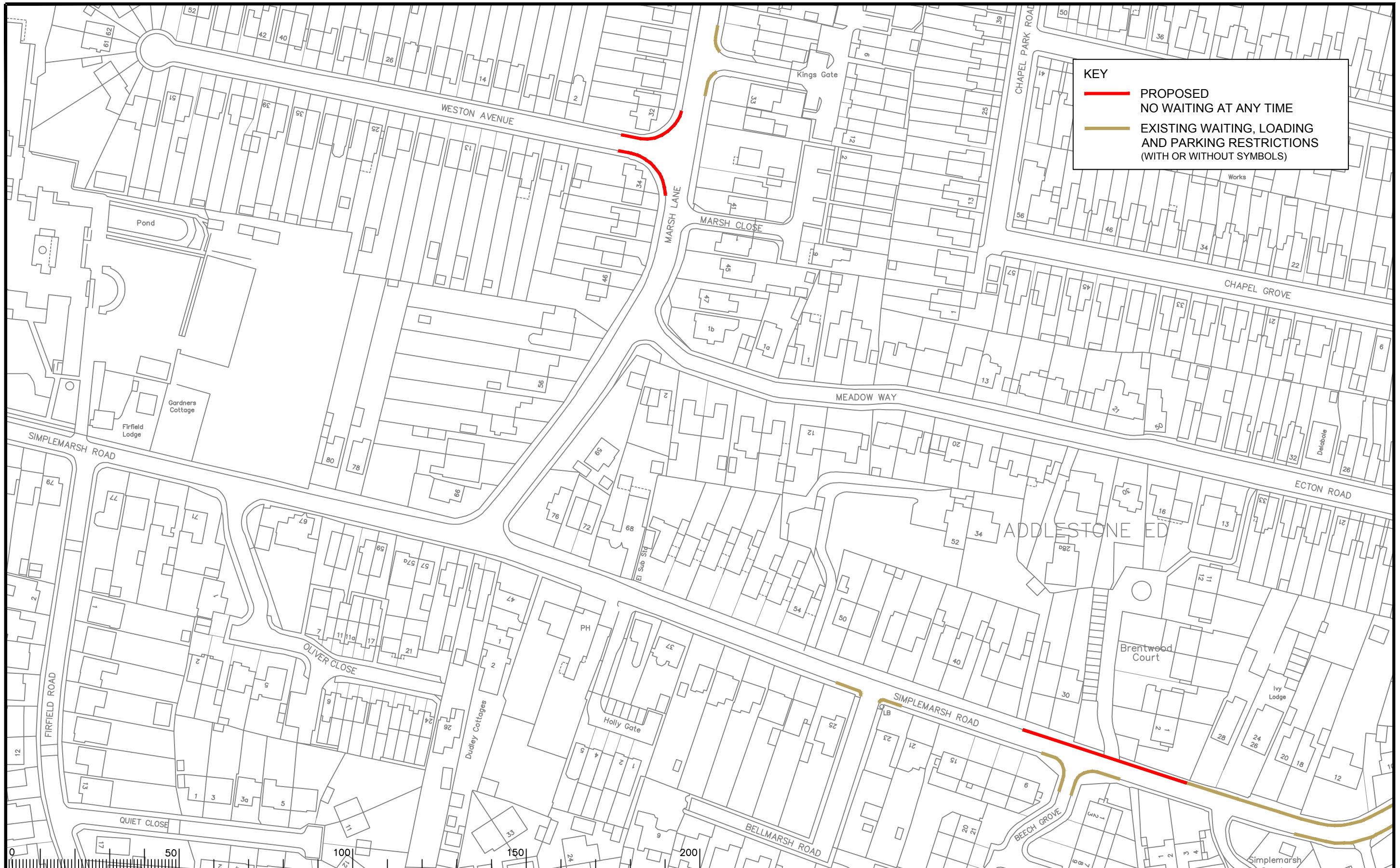
Contract No. 3282_69

Drawing No. 3282_69

Rev. A

Classification: PROPOSAL





KEY

- PROPOSED NO WAITING AT ANY TIME
- EXISTING WAITING, LOADING AND PARKING RESTRICTIONS (WITH OR WITHOUT SYMBOLS)

Notes

Rev.	Description	Drwn	Sig.	Date	Chkd	Sig.	Date	Appr	Sig.	Date
A	RESTRICTIONS AMENDED	CAH	CAH	02.16	JAR	JAR	02.16	RH	RH	02.16
B	RESTRICTIONS AMENDED	CAH	CAH	02.16	JAR	JAR	02.16	RH	RH	02.16
C	RESTRICTIONS AMENDED	CAH	CAH	02.16	JAR	JAR	02.16	RH	RH	02.16

North Point

Drawn by	CAH	Sig.	CAH	Date	07.14
Checked by	JAR	Sig.	JAR	Date	07.14
Approved by	RH	Sig.	RH	Date	07.14

Project
RUNNYMEDE DPE
ADDESTONE DIVISION

Drawing
IMPLEMENTED TRAFFIC ORDERS
ADDESTONE

SHEET OF

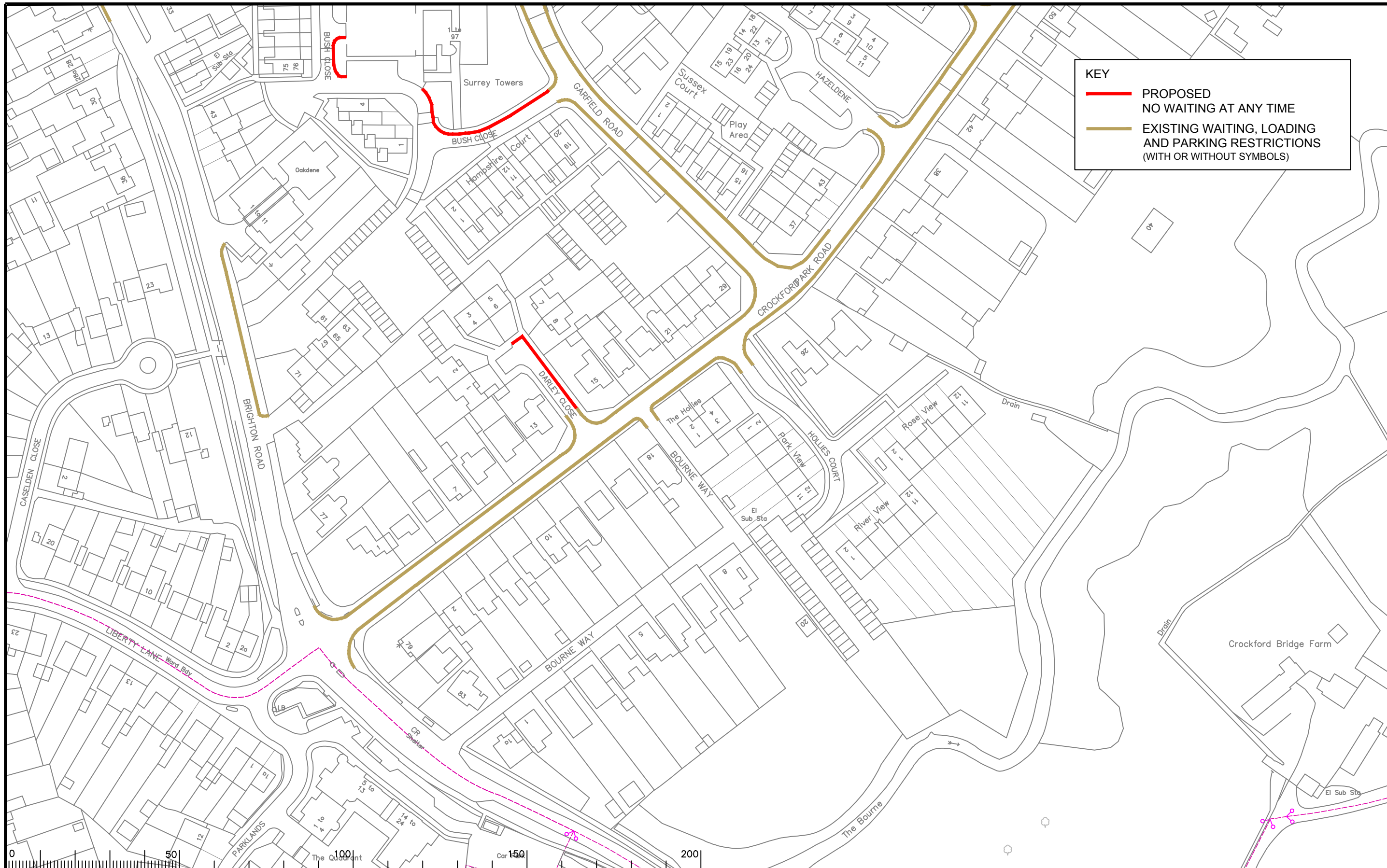
SURREY COUNTY COUNCIL

Project No. **3282**

Contract Sheet No. **3282_79**

Rev. **C**

Classification **PROPOSAL**



KEY

- PROPOSED NO WAITING AT ANY TIME
- EXISTING WAITING, LOADING AND PARKING RESTRICTIONS (WITH OR WITHOUT SYMBOLS)

Notes

Rev.	Description	Drwn	Sig.	Date	Chkd	Sig.	Date	Appr	Sig.	Date
A	RESTRICTIONS AMENDED	CAH	CAH	07.17	JAR	JAR	07.17	RH	RH	07.17
B	RESTRICTIONS AMENDED	CAH	CAH	10.19	PW	PW	10.19	DC	DC	10.19

North Point

Based upon the Ordnance Survey mapping with the permission of the Controller of Her Majesty's Stationery Office. Crown copyright. Unauthorised reproduction infringes Crown copyright and may lead to prosecution or civil proceedings. Surrey County Council LA 078872 1996.

Drawn by	Sig.	Date
CAH	CAH	04.16
Checked by	Sig.	Date
JAR	JAR	04.16
Approved by	Sig.	Date
RH	RH	04.16

Project
RUNNYMEDE DPE
ADDLESTONE DIVISION

Drawing
IMPLEMENTED TRAFFIC ORDERS
ADDLESTONE

SHEET OF

SURREY COUNTY COUNCIL

Project No.
3282/RUN

Contract Sheet No.

Drawing No.
3282_80

Rev.
B

Classification
PROPOSAL