



Notes

Rev.	Description	Drwn	Sig.	Date	Chkd	Sig.	Date	Appr	Sig.	Date

North Point

Based upon the Ordnance Survey mapping with the permission of the Controller of Her Majesty's Stationary Office. © Crown copyright. Unauthorised reproduction infringes Crown copyright and may lead to prosecution or civil proceedings. Surrey County Council LA 076872 1998.

Drawn by	Sig.	Date

Checked by	Sig.	Date

Approved by	Sig.	Date

Project

Reigate and Banstead Parking Review 2024 to 25

Drawing

BATTLEBRIDGE LANE, MERSTHAM

Project No.

Contract No.

Drawing No. 51

Rev.

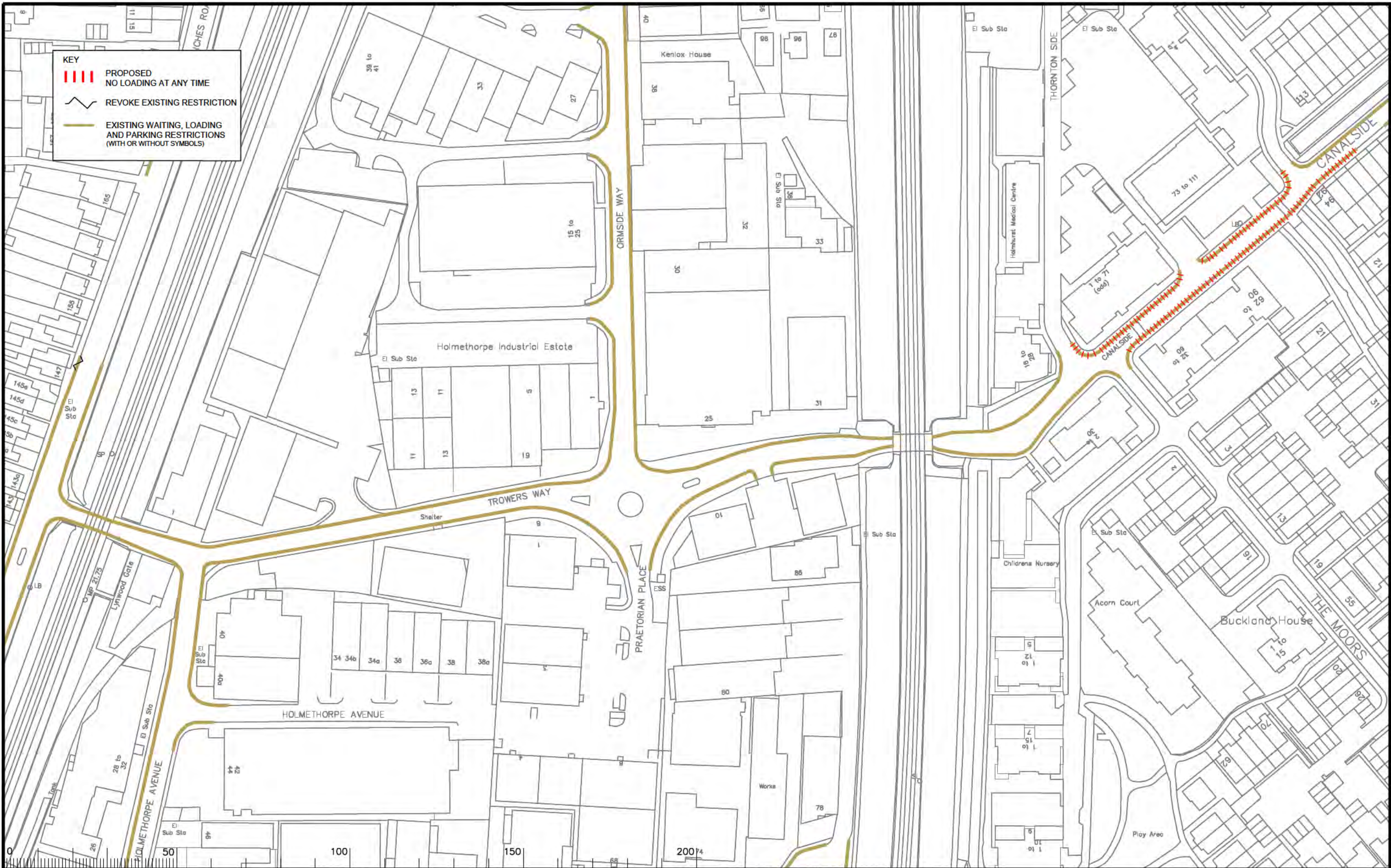
Classification

ADVERT

File Name: \\100C2-FLS-08\surreycc\local\VOL4\MLA8F3\red\CORE\Traffic and Legal\Parking Team\REIGATE & BANSTEAD\2024 Review\RA\Review 2024.dwg

QA3

SHEET 01



Notes

Rev.	Description	Drwn	Sig.	Date	Chkd	Sig.	Date	Appr	Sig.	Date

Based upon the Ordnance Survey mapping with the permission of the Controller of Her Majesty's Stationary Office. © Crown copyright. Unauthorised reproduction infringes Crown copyright and may lead to prosecution or civil proceedings. Surrey County Council LA 076872 1000.

Drawn by: Sig. Date

Checked by: Sig. Date

Approved by: Sig. Date

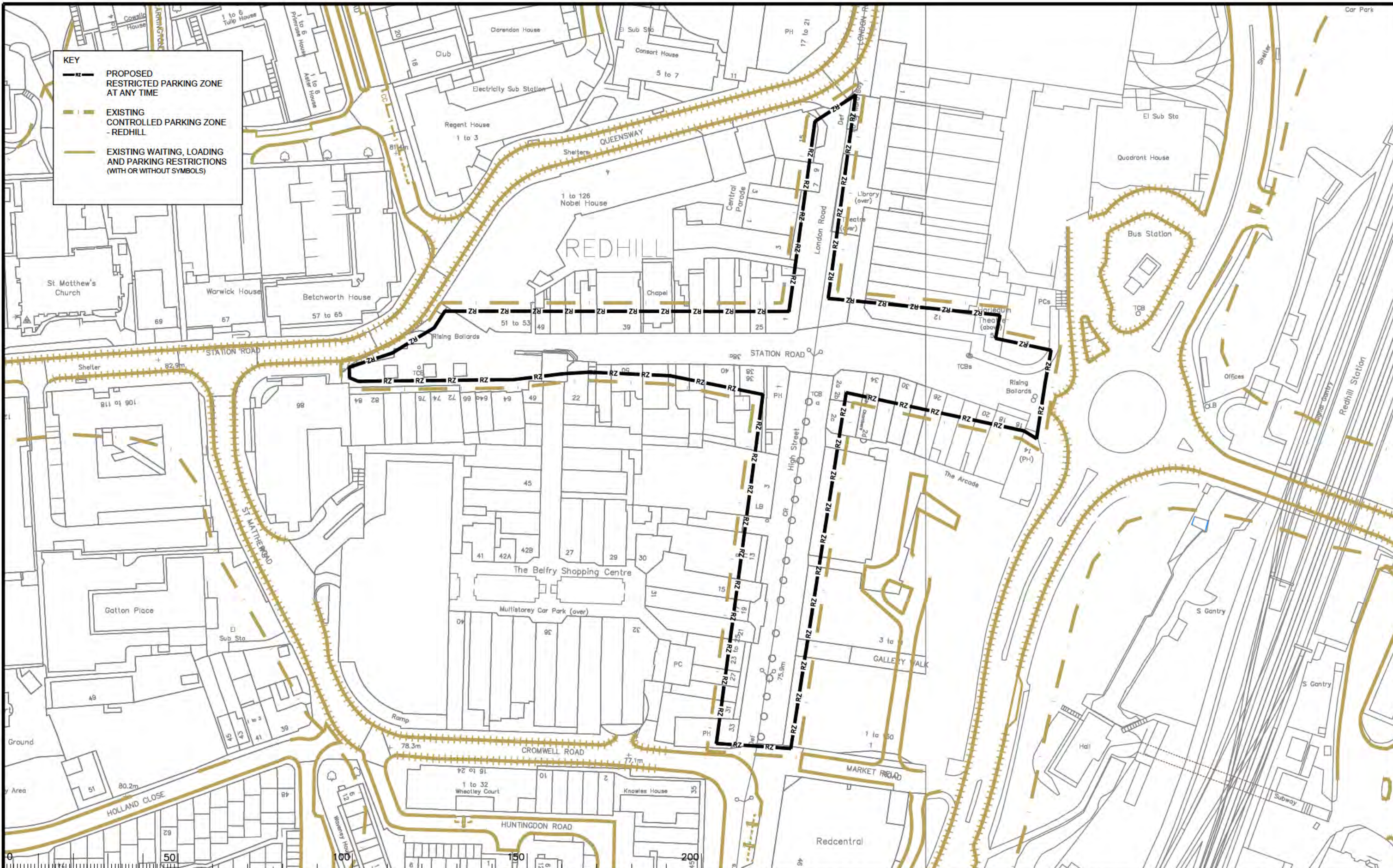
Project: Reigate and Banstead Parking Review 2024 to 25

Drawing: FRENCHES ROAD, REDHILL
CANALSIDE, REDHILL

SHEET 01

SURREY
COUNTY COUNCIL
Sustainable Development
Surrey Highways

Project No. Contract No. Drawing No. 53 Rev. Classification
ADVERT



Notes

Rev.	Description	Drwn	Sig.	Date	Chkd	Sig.	Date	Appr	Sig.	Date

File Name: \\00C2-FLS-08\surreycc\local\VL4\MLA8\F3\red\CORE\Traffic and Legal\Parking Team\REIGATE & BANSTEAD\2024 Review\RA\Review 2024.dwg

North Point

Based upon the Ordnance Survey mapping with the permission of the Controller of Her Majesty's Stationery Office. © Crown copyright. Unauthorised reproduction infringes Crown copyright and may lead to prosecution or civil proceedings. Surrey County Council LA 076872 1998.

Drawn by	Sig.	Date

Checked by	Sig.	Date

Approved by	Sig.	Date

Project: Reigate and Banstead Parking Review 2024 to 25

Drawing: REDHILL TOWN CENTRE RESTRICTED PARKING ZONE

SHEET 01

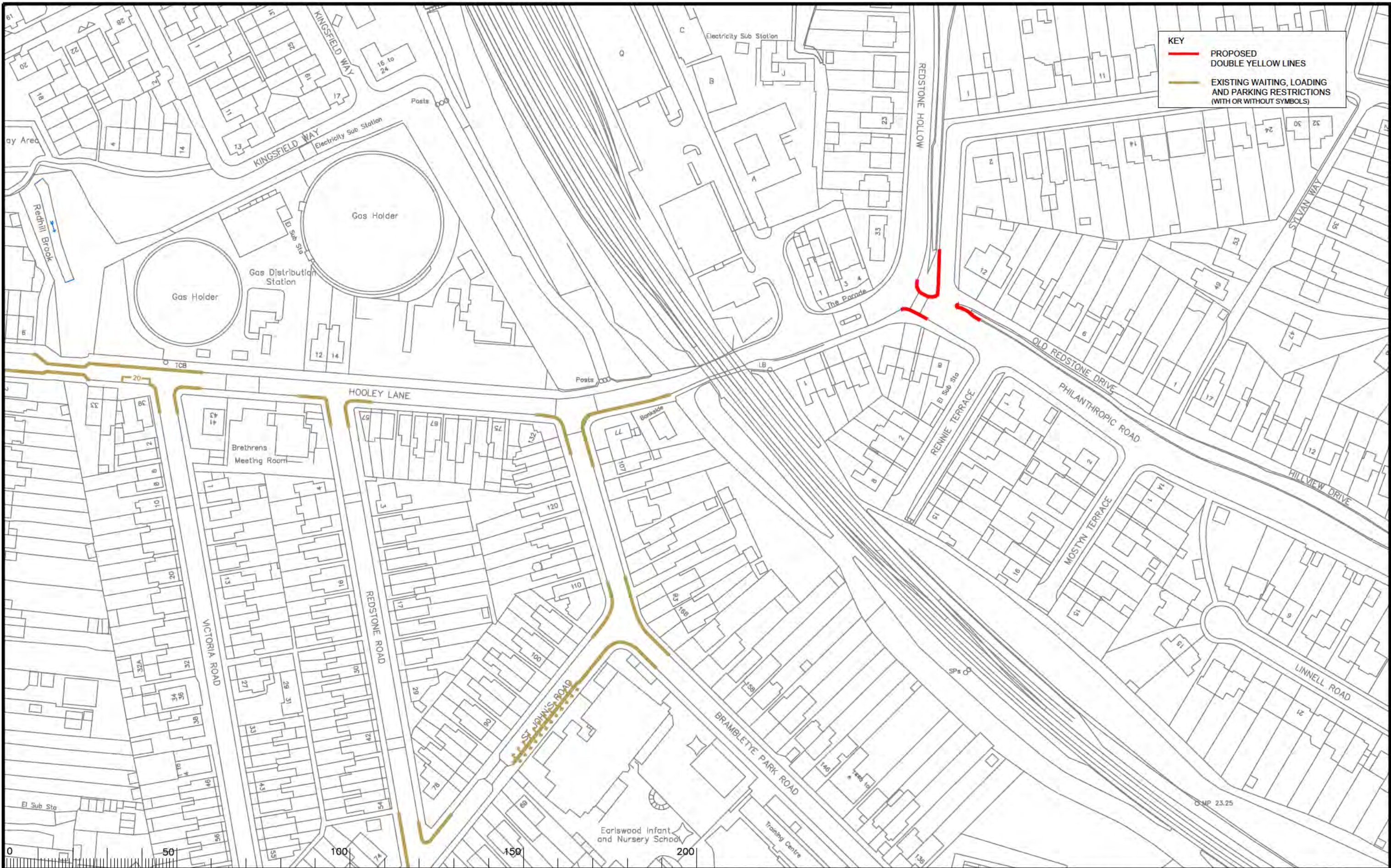
Project No.

Contract No.

Drawing No. 66

Rev.

Classification: ADVERT



Notes

Rev.	Description	Drwn	Sig.	Date	Chkd	Sig.	Date	Appr	Sig.	Date

North Point

Based upon the Ordnance Survey mapping with the permission of the Controller of Her Majesty's Stationery Office. © Crown copyright. Unauthorised reproduction infringes Crown copyright and may lead to prosecution or civil proceedings. Surrey County Council LA 076872 1998.

Drawn by	Sig.	Date

Checked by	Sig.	Date

Approved by	Sig.	Date

Project

Reigate and Banstead Parking Review 2024 to 25

Drawing

WOODSIDE WAY / PHILANTHROPIC ROAD, REDHILL

Project No.

Contract No.

Drawing No. 137

Rev.

Classification

ADVERT

File Name: \\100C2-FLS-08\surreycc\local\VOL4\MLA8F3\red\CORE\Traffic and Legal\Parking Team\REIGATE & BANSTEAD\2024 Review\RD\Review 2024.dwg

QA3

SHEET 01