

# Market Position Statement – Adults with Learning Disabilities

**January 2024**



# Introduction

The purpose of this market position statement (MPS) is to outline the supply and demand of Adult Social Care that are required for people with learning disabilities in Surrey. It is designed to signal business opportunities for the care market and gives relevant information to inform market development and commissioning plans from 2024. It is an iterative document, which will be reviewed regularly to ensure the inclusion of future plans and developments.

There are a range of services commissioned by Adults Wellbeing and Health Partnerships (AHWP) in partnership with NHS Surrey Heartlands ICB and NHS Frimley ICB. Quantitative and qualitative data sources have been analysed, including the voice of those who draw on support and their unpaid carers, to inform this statement.

The Market Position Statement covers two main areas of support for adults with learning disabilities:

1. Accommodation with care and support services, including supported independent living and residential and nursing care.
2. Everyday opportunities, including, outreach support, day opportunities for people with learning disabilities and care within the home.

## The Surrey Vision

In the [Community vision for Surrey in 2030](#), Surrey County Council has outlined its ambition for all residents. The most relevant ambitions for adults with learning disabilities:

- Everyone benefits from education, skills and employment opportunities that help them succeed.
- Everyone lives healthy, active and fulfilling lives, and makes good choices about their wellbeing.
- Everyone gets the health and social care support and information they need at the right time and place.

In 2019, the [Surrey Health and Wellbeing Board](#) (made up of senior managers from health and social care) published a 10 year Surrey strategy, which was subsequently updated in 2022. Within this strategy Adults with a learning disability and/or autism were identified as a priority population and as a community that is often overlooked and at risk of experiencing poor health outcomes.

The priorities from the Health and Wellbeing strategy are:

- **Priority One:** Supporting people to lead healthy lives by preventing physical ill health and promoting physical well-being.
- **Priority Two:** Supporting people's mental health and emotional wellbeing by preventing mental ill health and promoting emotional well-being.
- **Priority Three:** Supporting people to reach their potential by addressing the wider determinants of health.

Outcomes identified within those priorities are supported by learning disability services and service outcomes link either directly or indirectly to them. For example:

- **Priority One outcome** – “People are supported to live well independently.”
- **Priority Two outcome** – “Isolation is prevented and those that feel isolated are supported.”
- **Priority Three outcome** – “People's basic needs are met (food security, poverty, housing etc).”

In 2019 the NHS published [NHS Long Term Plan » Learning disability and autism](#) which requires the NHS to improve its understanding of the needs of people with learning disabilities and autism and to improve their health and well-being.

In response to the NHS [NHS Long Term Plan » Learning disability and autism](#) Surrey Heartlands Health and Care Partnership have set targets to improve take up annual health checks in primary care, ensure reasonable adjustments are in place to support people with learning disabilities and autism and learn from Learning Disabilities Mortality Reviews Programme.

<https://www.surreyheartlands.org/download.cfm?doc=docm93jjjm4n829.pdf&ver=60>

# Where are we now

## Prevalence of learning disabilities in Surrey

Surrey's Joint Strategic Needs Assessment (JSNA) was published in March 2023. The Learning Disabilities chapter [People with Learning Disabilities | Surrey-i \(surreyi.gov.uk\)](https://www.surreyi.gov.uk) outlines what we know about the lives of people with learning disabilities of all ages in Surrey. The JSNA includes information relating to health outcomes and access to health services, social care needs and provision, living circumstances, access to education and employment and how much of a voice people with learning disabilities have in their lives, the services they use and within their communities.

## Numbers of people with learning disabilities in Surrey

The JSNA summarises the current understanding of the learning disability population in Surrey. The population data is based on the numbers of people with a learning disability in 20/21 (most current data set sourced from NHS Digital) as captured by via the GP register.

The numbers indicate that in 20/21 the total adult learning disability population across the two ICBs totalled 6111.

In terms of age range, those aged 25 – 64 comprise the largest group representing 71% of the learning disability population. In addition, there are a significant percentage aged between 18 and 24, this age group comprises 18% of the learning disability population. Of the 6111 recorded on the GP registers, 3571 or 58% are male and 2540 or 42% are female.

The Public Health England 'Learning Disabilities Observatory People with learning disabilities in England 2015: Main report' indicated that only 23% of adults with learning disabilities in England are identified as such on GP registers and considered this the most comprehensive identification source within health or social services in England.

It is estimated that in 2023 approximately 22,000 adults in Surrey will have a learning disability, with only a proportion of this group known to health and social services. Applying the 23% to the overall prevalence rate, we should have 5060 people on the GP register (which is broadly the case).

The remaining 77% are often referred to as the 'hidden majority' of adults with learning disabilities who typically remain invisible in data collections.

The JSNA also includes estimates in relation to the anticipated growth of the learning disability population. Predictions are based on national prevalence estimates and accounting for local ethnicity and mortality rates. Predictions should be viewed in the context of advances in medical science which lead a greater number of people having a longer life expectancy from birth.

The estimated number of adults in Surrey aged 18+ with a learning disability is expected to increase by around 4.5% over time from 21,980 in 2023 to 22,971 in 2040. This is comparable with the estimated increase in the general population aged 18 years and over of 4.4% over the same period.

## Learning Disability and Autism

The Autistica website suggests that around 40% of autistic people have a learning disability, compared with just 1% of people without autism. Around 1 in 10 people with a learning disability are autistic so the two significantly co-occur.

A separate JSNA chapter focusing on neurodiversity is being developed by 2025/26 and a separate market position statement for Autism is being produced.

## Adults with a learning disability and Autism open to Surrey Adult Social Care services.

As at 1<sup>st</sup> Feb 2024:

- There were 4,352 people open Countywide with a primary client category of Learning Disabilities
- There were 4,379 cases open to Learning Disability and Autism and 1,611 to Transition, with the below breakdown for latest primary client category.

Team	Learning Disabilities	Mental Health	Older People	Physical Disabilities	Carers	Grand Total
LD-AUTISM EAST	1,605	56	103	67	303	2,134
LD-AUTISM REVIEW	74	0	2	2	1	79
LD-AUTISM WEST	1,508	41	79	79	458	2165
TRANSITION	985	7		118	501	1611
<b>Grand Total</b>	<b>4,172</b>	<b>105</b>	<b>184</b>	<b>266</b>	<b>1263</b>	<b>5,989</b>

# **Accommodation with Care and Support services, including Supported Independent Living, Residential and Nursing Care and Shared Lives**

## **Supported Independent Living (SIL)**

### **Where we are now**

Supported Independent Living is where individuals are provided with accommodation and organised support by one or more providers to enable them to live as independently as possible, participate in society and have an active life. The accommodation is domestic in nature and individuals have tenancy rights enabling them to change their care provider without moving home should they wish to. Accommodation can be self-contained or shared and individuals have access to relevant welfare benefits which can be used to cover their rental and other living costs.

SCC have a strategic ambition to increase the number of supported independent living places for individuals with a learning disability and/or autism. This ambition includes the development of new schemes and helping providers to de-register residential care homes into supported living units. This programme of work is further outlined in our 'Right Homes, Right Support' Market Position Statement.

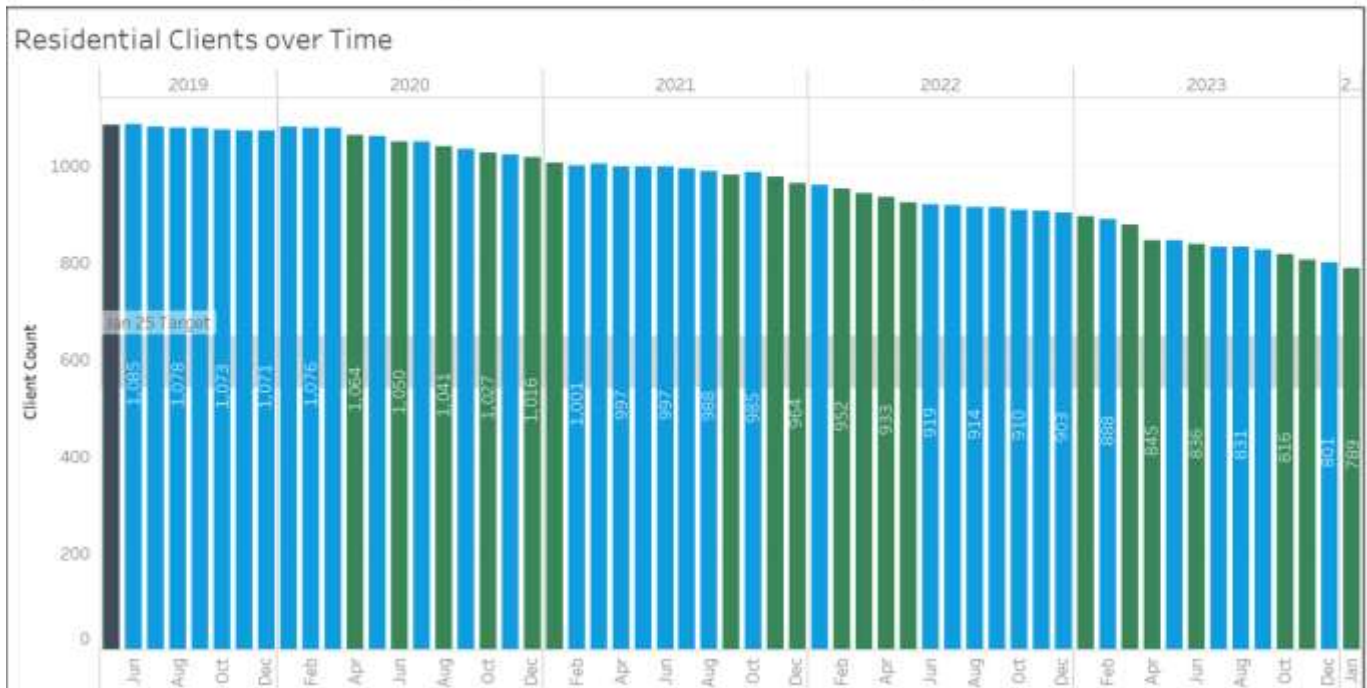
The majority of these services are delivered by independent sector care providers under contract with a small proportion of service being delivered by Surrey County Council (SCC) In House services.

Moves from residential care into supported independent living will be actively encouraged where appropriate through our programme of 'strategic shift'. There are formal targets in relation to this including the reduction in residential care placements for those with a learning disability and/or autism by between 40-50% from 2019, this equates to between 433 and 541 individuals from a baseline of 1082 people. As of February 2024 there are 790 individuals in residential care which equates to a reduction of 27% from the baseline.

## Residential Client Tracker

Includes Residential Dementia

May 2019 Baseline 1,082 clients	Current Clients in Residential Settings 789 clients	Current Δ from Baseline -293 -27.08%
------------------------------------	--------------------------------------------------------	--------------------------------------------



The graphic above shows the reduction of individuals with a learning disability and/or autism supported in residential care and funded by SCC from May 2019 (baseline date) to January 2024.

## Current market opportunities

A new community accommodation with care and support Dynamic Purchasing System (DPS) was launched in September 2023 and active since April 2024. It is a joint DPS with Surrey Heartlands and Frimley ICBs and developed during over two years, during which time there were nearly two dozen market engagement events and smaller take and finish group meetings. The DPS runs for five years with a facility for two extensions, each of 12 months. The DPS can be accessed by signing up to [proactis](#), then searching for:

- **Project Name:** SCC IC Care and Support with Community Accommodation DPS
- **Project Reference:** RFX1000432

Providers can bid for two lots for people with a learning disability and/or autism; there are also lots for people whose primary needs relate to physical or sensory disability and mental health.

**Lot 1: Level one Learning Disability and/or autism** – Care and Support with Community Accommodation for people whose primary need relates to learning disability and/or autism.

**Lot 2: Level two Learning Disability and/or autism** – Care and Support with Community Accommodation for people whose primary need relates to learning disability and/or autism and who meet the additional requirements for Lot 2 Level 2 support.

The DPS assesses both quality and commercial parameters and the Council will prioritise working with providers who are successful in bidding for a place on the DPS. The independent sector plays a critical role in delivering supported independent living and the DPS provides a structured and equitable approach through which the sector can contribute to and benefit from the Council's transformation agenda.

### **Priorities for tailored learning disability and/or autism supported independent living**

Self-contained accommodation: There is a need across the county for single person self-contained accommodation to meet the needs of people with a learning disability and/or autism who wish to live alone or who struggle to live with others.

Accessible accommodation: There is a need, across the county, for accessible accommodation. Accommodation that can meet the needs of wheelchair users (M4(3) standard), accessible wet rooms and accommodation that can support the use of equipment such as tracking hoists.

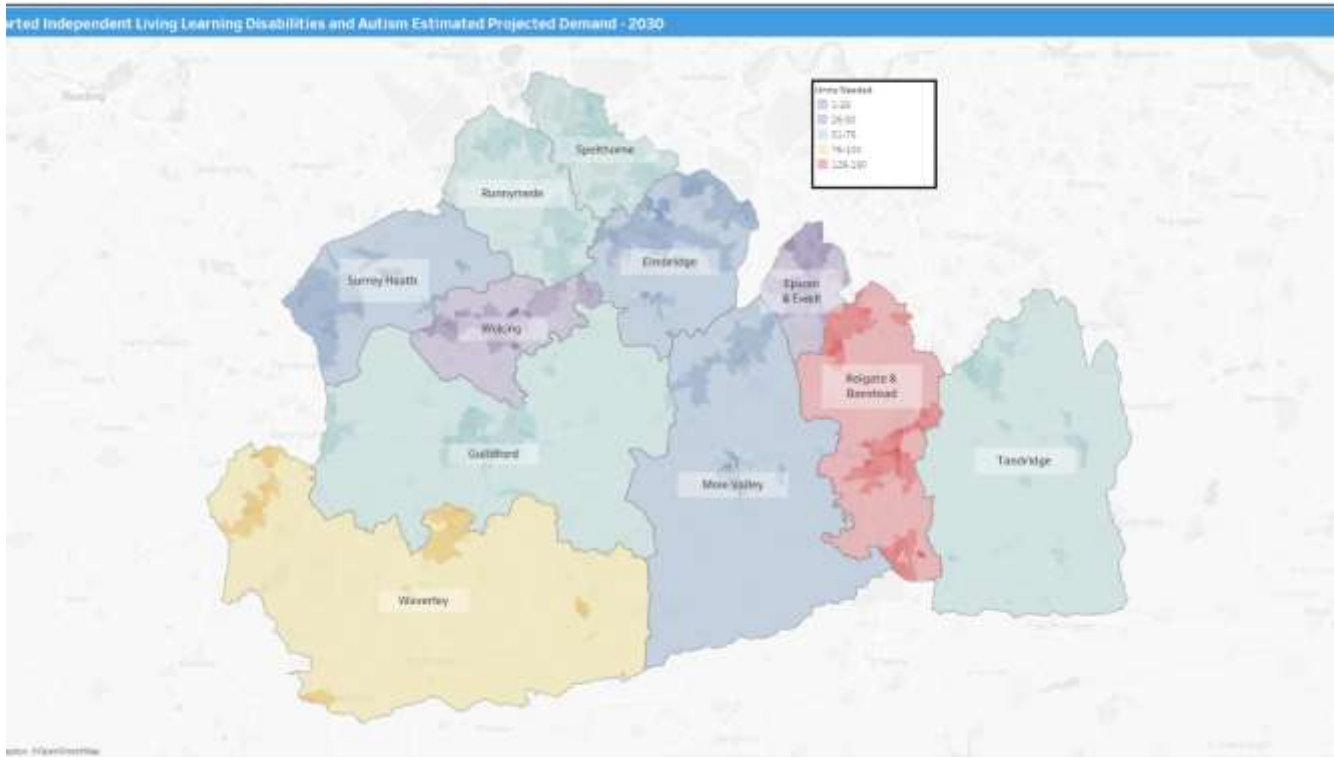
Shared accommodation: younger individuals, from as young as 16, coming through Transitions services and their families have clear aspirations in terms of modern and attractive shared accommodation e.g. bedrooms with ensuite bathrooms, large communal spaces, outdoor space and proximity to good amenities, transport and further education centres.

Accommodation that supports people with sensory requirements and complex needs: a number of individuals with a learning disability also have additional needs (e.g. sensory, behavioural). These needs often be better met within accommodation that has been sensitively designed with thought being given to aspects such as layout, lighting, acoustics, surface finishes and fixtures and fittings. The BSI have produced some useful guidance that can support providers and developers, this can be accessed via the Housing LIN website.

[Design-for-the-mind-Neurodiversity-and-the-built-environment-Guide.pdf \(housinglin.org.uk\)](https://www.housinglin.org.uk/design-for-the-mind-neurodiversity-and-the-built-environment-guide.pdf)

Location: Our analysis shows that there is a shortage of Supported Independent Living across the county to meet current and future demand. The map below illustrates this at a D&B level.





The map gives an indication of the demand for Supported Independent Living services for people with a learning disability and/or autism to 2030 across each D&B area in Surrey. The demand projections were developed to take account of population projections based on PANSI/POPPI data and an audit of the accommodation available as at Summer 2022. Colour indicates the deficit in projected estimated capacity and population density.

Capacity: SCC have an indicative growth target of an additional 500 units of supported independent living, this was set out in the Cabinet paper of November 2020 and is a minimum requirement. Reasonable progress has already been made against the target since 2020 with completed and pipeline delivery currently standing at 83% of the target (circa 420 units). However, this additional capacity needs to be considered within the context of a challenging financial environment that has seen the closure of some accommodation-based services within the last 12 months. SCC are in the process of analysing this further to understand the net impact of these trends.

## Future market opportunities

### SCC direct delivery of Supported Independent Living Accommodation

Alongside working with the independent sector, the Council has committed to the funding and development of specialist accommodation. Capital funding has been allocated within the Council's Medium Term Financial Strategy to support this and

the Council has undertaken a review of its own estates portfolio to identify potential sites for use.

In 2023 planning permission was granted in respect of three developments on Council owned land that will deliver 44 units of Supported Independent Living. This accommodation will comprise a mix of shared and self-contained housing. The accommodation will be located in Horley (Reigate & Banstead), Cobham (Elmbridge) and Byfleet (Woking). Construction is due to commence in spring/summer of 2024 with expected completion/handover in spring/summer 2025. All accommodation within the schemes will be fully accessible, built to M4(2) and M4(3) standard. Further details can be found here:

<https://horleysil.communityuk.site/>

<https://covehamsil.communityuk.site/>

<https://byfleetsil.communityuk.site/>

The video link provides a description of proposed layout of properties.

<https://www.surreycc.gov.uk/adults/care-and-support/disability/supported-living>

AHWP intend to commission independent sector provider(s) to deliver the care and support at the settings on the three developments. These services will be commissioned as mini competitions under the DPS for Community Accommodation using Lots 1 and 2, during the financial year 2024-2025. Market engagement will commence in late spring 2024 and the tender opportunities are currently scheduled to go live in late summer 2024.

## **DPS Ghost Lots**

There are 'ghost lots' within the DPS, which signal additional areas of support that it is intended will be procured in the near future. These are:

### **Lot 9: Shared Lives**

Shared Lives is a form of Supported Independent living where an individual lives within another family's home environment and receives care and support from a carer within that family. This can be a permanent arrangement, or it can take the form of regular daytime or overnight visits.

Currently AHWP commissions Surrey Choices, the Council's wholly owned Local Authority Trading Company, to manage most of the Shared Lives support. There are also schemes operated by a small number of other providers.

As at March 2024 there were 75 people with a learning disability with long term (permanent) shared lives arrangements and a further 3 with short term arrangements in place.

SCC recognises the benefits of shared lives as an alternative to both traditional residential care and SIL. AHWP have an ambition to grow the Shared Lives offer as part of the wider move to enabling individuals to live more independently within

their communities. A target for growth was set in 2019, this target was to achieve a 130% increase in the number of people receiving shared lives services over 6 years. This target has not been reached and AWP will continue to work with partners to consider how best to develop shared lives services in Surrey.

Part of this will be to determine market appetite and, should it transpire that Share Lives schemes are considered a viable option, a timeline to operationalise this lot, developing relevant specifications and qualification criteria and undertake appropriate market engagement, will be established.

### **Lot 11: Independent Living from age 16 years**

We will be working closely with our colleagues in Children Families Lifelong Learning (CFLL) as well as in Surrey Heartlands and Frimley ICBs to explore with the market how best to procure support for young people who, once 18 years old, will be eligible for Adult Social Care and who require supported living accommodation while aged 17.

### **Lot 12: Multi-Disciplinary bespoke packages**

We will be working closely with our colleagues in Surrey Heartlands and Frimley ICBs to explore with the market how best to procure support for individuals who require bespoke packages of support. Relevant specifications and qualification criteria will be developed as part of this process.

### **Lot 13: 100% health funded / Continuing Health Care**

This lot provides a facility for support commissioned by NHS Partners. We will work with them to explore with the market how best to proceed. Relevant specifications and qualification criteria will be developed as part of this process.

## **Residential Care and Nursing Care**

### **Where we are now**

Residential care is where individuals live in shared accommodation with 24-hour care and support. In residential care settings both the accommodation and care are regulated and intrinsically linked. Some residential care services are also registered to provide nursing care. In residential care individuals can't change their care provider and remain living in the home.

All residential care services for individuals with a learning disability are provided by independent sector care providers. We work with providers to ensure individuals are as independent as possible.

Because of our focus on Supported Independent Living and 'strategic shift' activity, residential care provision will become increasingly focused on individuals with more complex care and support needs.

Where individuals live in residential placements outside of Surrey we offer them the opportunity to move back to Surrey should they wish to do so.

As of February 2024, there were 104 care homes registered with the CQC, operating within the county of Surrey **and** registered to provide services for people with a learning disability both under and over the age of 65. This is an important distinction as it indicates a more specialist level of care home support. These homes have a total capacity of 860 beds. In addition, there were 9 homes registered to provide nursing care for people including those with a learning disability.

Anecdotally we know that care homes operating across Surrey are also commissioned by other authorities and NHS partners.

## Market Opportunities

Anecdotal evidence suggests that there is a need for more specialist residential and nursing care for people with a learning disability. For example, there are difficulties in accessing services that can meet the needs of people with a learning disability who then develop dementia (often at an earlier age to people within the general population). This challenge is evident both within Surrey and the South East more widely. Likewise, there are challenges accessing nursing care services for people with a learning disability, with many nursing care organisations focusing on generic older persons needs without the additional training and skill set needed to offer quality services to people with a learning disability.

In July 2022, the Older Persons' Commissioning Team launched the Residential and Nursing Care DPS. This is used to procure support for people whose primary need is related to their age.

The DPS can be accessed by signing up to [proactis](#), then searching for:

- **Project Reference:** RFX1000114.

It includes ghost lots as follows:

- Lot 4: Residential Care with or without Nursing (Placeholder, Adults for ASC and CHC only 18 -65): This is for long and short term placements (with or without FNC funding in place – ASC placements only) for people with physical disabilities, sensory impairment (including Deaf/Blind) or brain injury/neurological condition between the ages of 18 and 65 with needs eligible for either Surrey Continuing Health Care funding or Adult Social Care.

- Lot 5 : Residential Care with or without Nursing (Placeholder, Learning Disability for ASC and CHC only): This is for long- and short-term placements (with or without FNC funding in place – ASC placements only) for adults with a learning disability and/or autism (with or without behaviour that challenges) with needs eligible for either Surrey Continuing Healthcare funding or Adult Social Care.

We will work closely with our colleagues in Surrey Heartlands and Frimley ICBs to explore with the market how best to procure support for individuals who require packages of support within residential and/or nursing care homes. Relevant specifications and qualification criteria will be developed as part of this process. Work is underway to enable tenders against these lots from early 25/26.

## Short Breaks

### Current Position

Short Breaks promote the wellbeing of informal Carers, enabling them to have a break from their caring responsibilities and sustain their ability to support the individuals to live at home.

Short Breaks also give people with learning disabilities and/or autism an opportunity to share experiences and socialise in their community outside of their family home.

As of March 2023, there were 1,345 individuals living with family carers. The table below shows a breakdown of individuals by age living with family carers.

Age individual	Under 18	18-19	20-30	31-39	40- 49	50+	Grand Total
Living with family carers	108	161	643	224	105	104	1,345

### Building Based Short Breaks (Respite)

Currently there are 6 registered bed-based Short Breaks services in Surrey, providing a total of 33 beds per night. AHWP spot purchase Short Breaks from:

- SCC’s in-house Service Delivery provision
- Surrey Choices, the Council’s wholly owned Local Authority Trading Company
- Surrey and Borders Partnership NHS Trust
- Providers in the Independent Sector.

### Flexi breaks

AHWP commission Surrey Choices (the Council's wholly owned Local Authority Trading Company), to provide non-residential breaks at weekends and evenings in the community.

## **Market Opportunities**

In March 2023, as part of the Accommodation with Care and Support Programme, Cabinet approved a proposal to re-model the Council's Short Breaks offer. The purpose was to ensure a greater diversity in the options available and greater equity of access.

The approved re-model included the reprovision of the residential short breaks offer procured from Surrey Choices, developing modern fit for purpose overnight accommodation at the following sites:

- Lakers, Denton Way, Goldsworth Park, Woking, GU21 3LG
- The Squirrels, The Horseshoe, Banstead, SM7 2BQ, to replace the current facility.

[Short Breaks Strategy Cabinet Report March 2023.pdf \(surreycc.gov.uk\)](#)

# Community Opportunities including Outreach, Day Activities, Employment Support and Care within the Home

## Community Support for Everyday Living

Surrey residents with eligible care and support needs can live their best lives if they have access to a variety of community opportunities for everyday living that is personalised and focused on prevention and early intervention. This requires a move away from support being unnecessarily tied to specific locations and/or buildings, which can lead to people being segregated from their community, in favour of support that promotes community inclusion. It aligns with the 'Place shaping' agenda and with 'Right homes, right support', recognising people should be supported to interact with their local community – people and parks, facilities and services - to live 'gloriously ordinary lives'. The ambition is as set out in the Surrey 2030 Vision, Health and Wellbeing Board priorities, and All-Age Autism Strategy.

Technology plays an important part in all our lives. Support to engage with the technology that is increasingly informing daily interactions with community facilities needs to be part of many packages of care. Similarly, technology enabled care (TEC) can offer greater independence and a degree of risk management in independence that would otherwise not be possible. Most people with care and support needs can benefit from innovative approaches to TEC and it will be integral to future procurement activity in respect of Community Support for Everyday Living. AWWP's TEC strategy is currently being refreshed, led by Dan Stoneman, Head of Commissioning.

## Current position

Community Support for Everyday Living refers to a number of workstreams:

- **Outreach:** supports people to access community facilities and activities, and to build local networks. As part of this, outreach services may also support people in their own home with planning, benefits, bills, budgeting and meal planning. Although outreach services sometimes support people with personal care, this is not the main purpose. As of February 2024, Surrey County Council commission services for 550 people that have a learning disability and/or autism, with around 56 'day centres' across the county. These vary in capacity and will offer a range of activities and support levels.
- **Day and evening activity:** currently, support for people in the community that use a building as a base are referred to as day services. People may get their support within the building, within the community but starting out

from the building, or a combination of both. As of February 2024 there are 22 providers across Surrey that provide Outreach support and 260 people with a learning disability and/or autism that receive an outreach service.

- **Employment**

Supporting people with a learning disability or autism into employment, whether paid or voluntary, is an important part of AWHP's vision and the wider [Community vision for Surrey in 2030](#).

The target set out within the national Adult Social Care Outcomes Framework is for 19% of people with a learning disability, who are of working age (between the ages of 18 and 64), to be in employment or volunteering.

In 2022/23, there were 11.8% of people with a learning disability or autism of working age, being supported by adult social care and in paid employment. This is higher than the National average of 4.8% and the South-East average of 6.6%. Surrey has seen improvement in this area, in 2014/15 the figure was 7.7%, although it has decreased from a pre-covid peak of 13.4% in 2019/20.

The current employment offer consists of the following:

- Supported Employment: available to all eligible adults aged 18+ and comprising career advice, job searching, links with employers and job carving, interview support, job coaching, in-work support and job maintenance.
- Supported Internships with employers: targeted at those aged between 16 and 24 years of age, linked to skills and interests and offered in the last year of education.
- Work experience and volunteering opportunities: offered to those aged between 16 and 24 years of age and ideal for those not in education.

Further detail can be found in the JSNA within the Employment chapter.

Roughly half of Surrey's Community support for Everyday Living is currently purchased through spot contract arrangements. There is an ambition to commission this type of service differently to ensure that support is responsive to what people want and need, is strength-based and promotes progression. Commissioners have started to engage with people that use these models of support and with providers to develop a shared vision for the range of support required and identify the right approach to procurement.

The other half of Surrey's Community support for Everyday Living is currently purchased from Surrey Choices (the Council's wholly owned Local Authority Trading Company). This includes the large majority of supported employment services. More about their offer can be found here: [Learn about the vocational & employment opportunities Surrey Choices provides](#)



In addition, there is an expectation that Supported independent Living providers will work with the individuals they support to encourage and enable people, where appropriate, to access employment. This can either take the form of direct support, with some supported living providers developing their own employment offer, or through relevant signposting and partnership with supported employment services such as that delivered by Surrey Choices. The revised specification for Supported Independent Living issued as part of the Community Accommodation DPS formalises our expectations in relation to employment and the role that supported independent living providers should play.

## **Market Opportunities**

### **Day Activities, Outreach & Employment**

We are co-produced our commissioning intentions for Community Support for Everyday Living with individuals, family carers and providers. They include outreach, activities, and employment. It is envisaged that this will cover all adults eligible for adult social care. We welcome micro-providers and peer-led organisations. We want funded support to interface with local community assets that are used by the whole community. Headlines from the work so far include:

- The variety of offers is valuable - one size does not fit all
- People want a more community-focussed approach
  - Making more use of universal offers, communication and collaboration. Links with libraries, transport hubs, businesses...
  - More focus on employment
  - Moving away from traditional based day services, although some building-based hubs will continue to be required
  - Need to influence public understanding to build inclusive communities - Safe Spaces schemes, quiet times, transport, green space, accessible environments
  - Community Accessibility – how to collaborate and influence other services and infrastructure e.g., sensory rooms in libraries, community hubs, more accessible toilets and Changing Places etc.
- Location is important – people want support close to home, but currently it is not evenly distributed
- Some support needs to be aimed at autistic people without a learning disability as well as support for people with a learning disability.
- Support is addressing increasing complexity of demand (physical and mental health / distressed behaviour)

Current opportunities for providers include:

- Outreach: unmet demand across the county

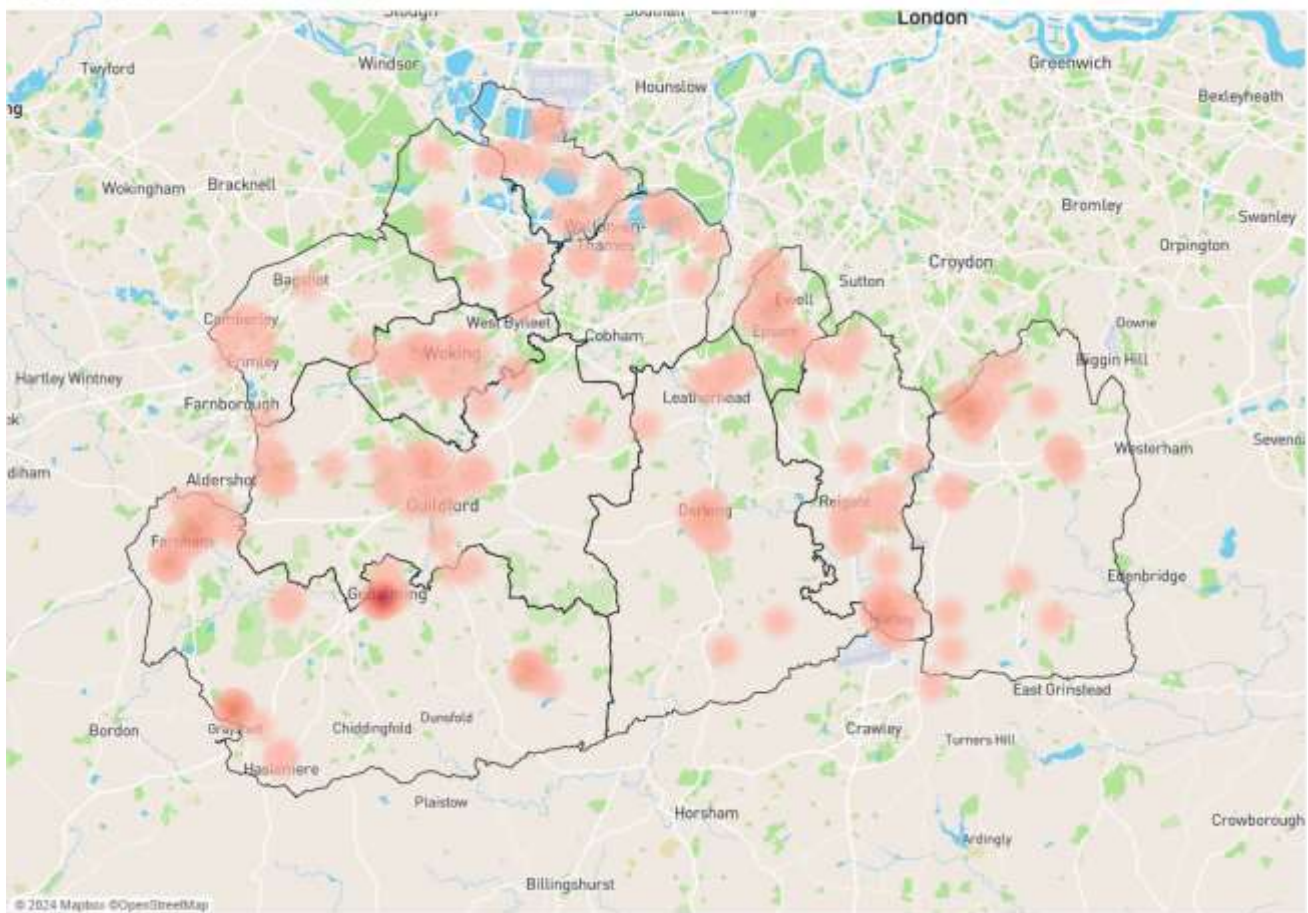
- Day activity: people would like to see more choice, and opportunities that focus on developing independence and skills that lead to outcomes, rather than just activities.

It is important that individuals who elect to use a direct payment or those that fund their own support can access and are aware of the available offers and that costing information is transparent.

## Outreach

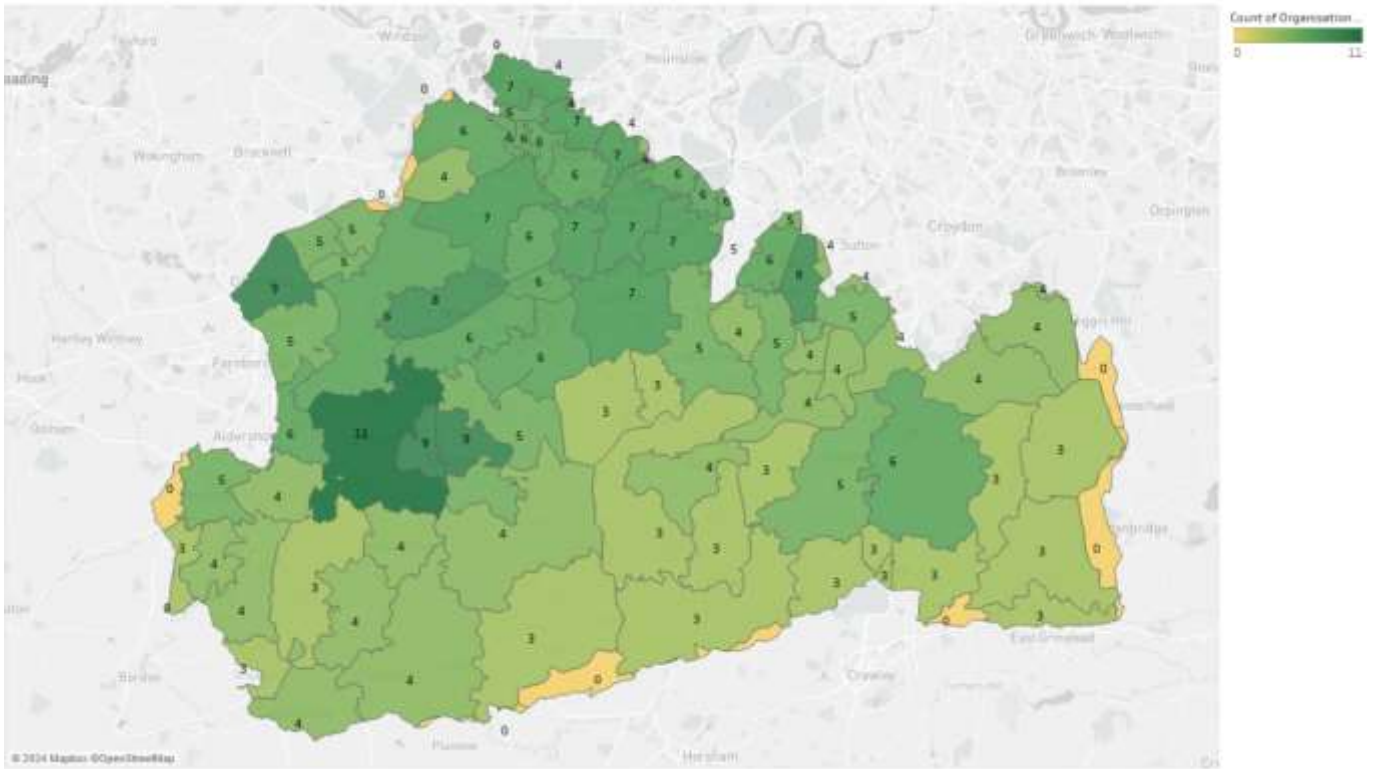
The map below gives an indication of where people who use outreach live. All areas require outreach support with the largest demands required in Woking, Guildford, Walton on Thames, Reigate, Horley, Farnham and Godalming.

People who use Outreach services



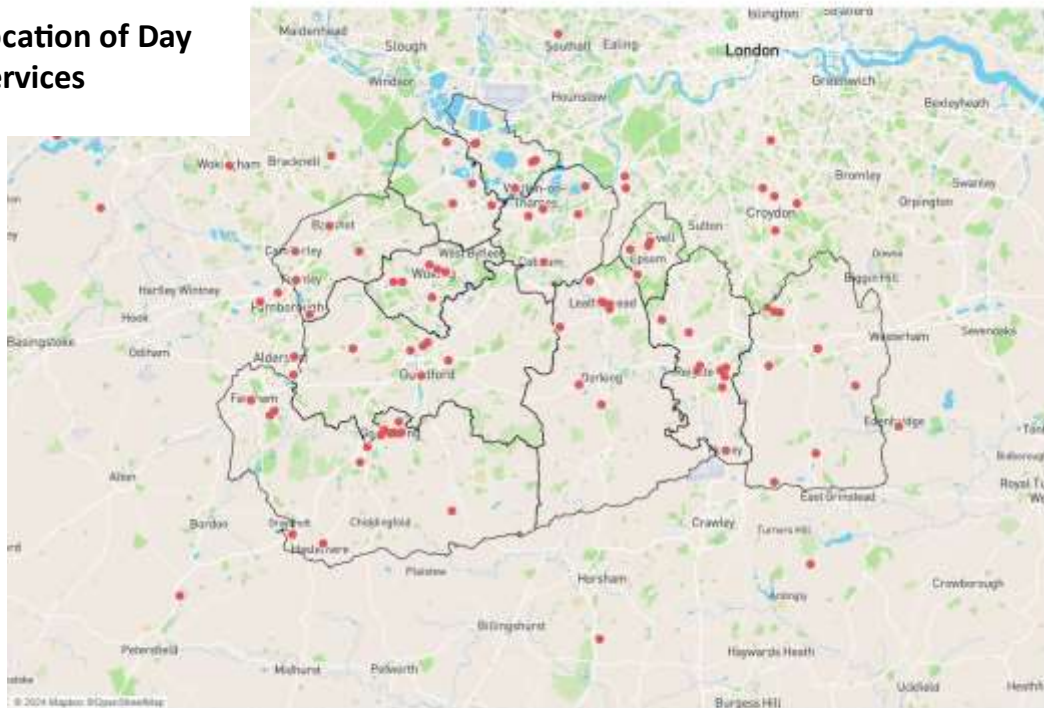
The map below gives an indication of number of outreach providers operating in towns across Surrey.

### Outreach areas covered



Day and Community activities map below shows where **day services** currently operate. This is in line with areas people live.

### Location of Day Services



## Care within the Home

## **Current Position**

Care within the Home (CwH) is the term used to cover Domiciliary Care and Live-in care arrangements. Domiciliary care is put in place to support an individual in their own home and is usually delivered at designated times during the day or week as defined by the individuals support plan. Support will usually include personal care tasks and may involve meal preparation, medication prompting and tasks relating to the wellbeing of the person.

Care within the Home Dynamic Purchasing System went live on 30 September 2021 for an initial period of 2 years and with a maximum length of 6 years and is a joint contract between Surrey County Council and NHS Continuing Healthcare (CHC) in Surrey.

As of February 2024, there were 112 agencies who had successfully been awarded a place on the Care within the Home DPS. Of these agencies, 60 can provide services to people with a learning disability. There are approximately 243 people with a learning disability and/or autism that receive support via the CwH DPS.

The DPS includes the provision of the following services:

- Home Based Care(HBC) - this includes services for people with additional needs such as learning disability or autism
- High Needs-(CHC)
- Live-in care

## **Market Opportunities**

The specialist care within the home services will continue to be commissioned via the current DPS, although as of April 2024 this is currently closed as the demand is covered by existing providers.

# Working together

**Provider Forums** are held quarterly, and Market engagement sessions provide an opportunity for provider market to work with Adult Social Care in co design of new services. To sign up to ensure you hear the latest news and get notifications of events, please contact: [ldcommunications@surreycc.gov.uk](mailto:ldcommunications@surreycc.gov.uk)

**Joint LDA Programme Delivery Board** is held quarterly and has representation from providers from Surrey Care Association LD&A sector.

Its purpose is to:

- To provide clear leadership and direction, reviewing progress by exception and ensuring the programme delivers within its agreed boundaries (organisational, impact, cost, quality and timescales);
- To oversee the development and implementation of the 3-year delivery plan, the 5-year forward plan and the Joint Strategic Needs Assessment (JSNA);
- To secure support for interventions where delivery is not on track;
- To maintain a risks and issues register, resolving all possible and escalating risk for the information of and/or action by senior stakeholders to ensure progress.
- To engage with the broader membership of the Partnership Board to ensure a 360<sup>o</sup> understanding of the strengths, weakness, opportunities and threats of the system of support for residents with LDA and their families;
- To ensure that actions relating to the LDA strategic agenda are delivered in the context of wider system strategic priorities;
- To proactively link with other governance structures that may be a vehicle for delivery outputs e.g. additional needs and disabilities, preparation for adulthood, accommodation with care and support etc.
- To report upwards to ICB, NHSE/I and Surrey County Council executives and governance forums.

Surrey has a **Learning Disability Partnership Board** which is co-chaired by an individual with learning disability. Members of the Boards are all key individuals (stakeholders), who can bring about change, they are people with learning disabilities, their families, professionals, provider organisations and voluntary organisations.

The purpose, as decided by members of the Board, is that working together people with a learning disability and/or autism can have a voice, make change happen, live in the community, be informed, be safe, remain healthy and confident to be part of their community.

The following “I principles” apply to Partnership Board

- I have choice and control over my life;
- I have a voice;
- I live in the community with support from my family and carers;
- I have a fulfilling and purposeful everyday life;
- I get good care from all health services;
- I can access extra health and social care support when needed; and
- I am supported to stay safe.

Surrey covers a large geographic area and population and to ensure engagement there are four local **Valuing People Groups** that meet regularly to local at what is happening locally and tackle local issues.

- East Surrey -Reigate and Banstead and Tandridge;
- North-West Surrey – Runnymede, Spelthorne and Woking;
- South-West Surrey – Guildford and Waverley and Surrey Health; and
- Mid-Surrey – Epsom and Ewell, Mole Valley, Elmbridge.

They too offer an important way for providers to engage directly with the LDA community in the locality.

In conjunction with these forums, an **information hub** has been established, supported by a central email address, to ensure information is available to all.

[Surrey Learning Disability Partnership Board Website.](#)

## **Other engagement opportunities**

[Surrey People's Group: having a voice](#) - is a Surrey wide group of people with a learning disability who want to work together to campaign and make change happen through their collective voice and experience. It is supported by the Learning Disability and Autism Engagement Team. Providers work with the engagement team to enable individuals they support to attend and share their views.

The development of **accessible information** has been supported by the Get it Right! team. Get it Right! is a team of people with a learning disability recruited from across Surrey. Team members work with the [Learning Disability and Autism Engagement team](#) on easy read materials to check that they make sense. Up to three people two hours of work each month and are paid for the work they do.