

Publication Date:

Tuesday 2 November
2021

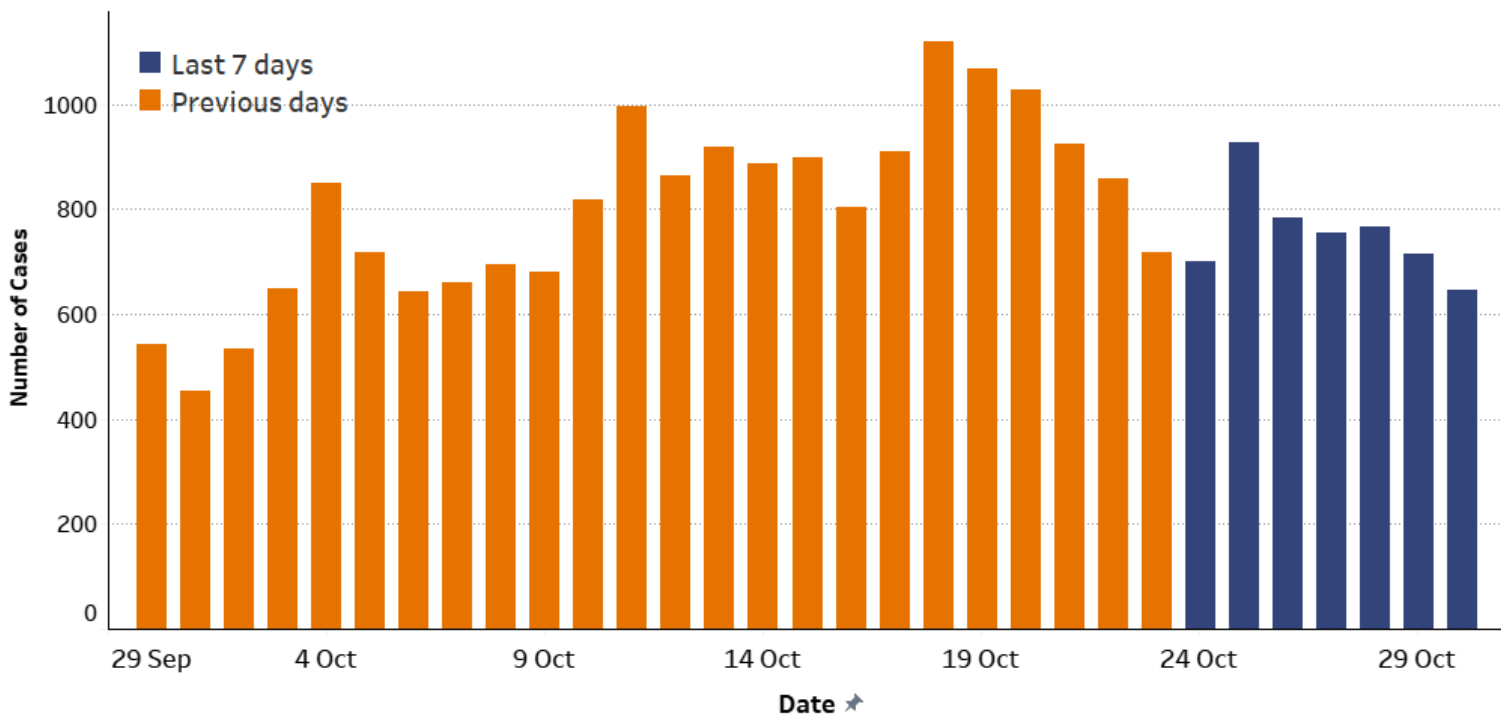
Surrey COVID-19 Summary



Cases and Rates

For more detail please see full report at www.surreycc.gov.uk/covidcases

Daily Cases



Change**



New cases in last 7 days

5,299

Rate for the last 7 days*

441.6

Data shown for time period Sunday 24 October 2021 to Saturday 30 October 2021

*Rate represents number of cases per 100,000 population for the last 7 days

**Changes are relative to the previous 7 days (17 October - 23 October). If there is an increase of less than 10%, a grey arrow will indicate that the rate may have plateaued, but is not showing a significant rise or drop

Change**



Surrey Heath

Cases (7 days)

542

Rate (7 days)

607.6

% Change**

-22%



Waverley

641

506.5

-18%



Mole Valley

424

484.3

-13%



Reigate and Banstead

704

471.7

-16%



Woking

445

445.0

-30%



Epsom and Ewell

359

443.2

-6%



Elmbridge

593

432.2

-14%



Tandridge

366

413.4

-6%



Spelthorne

397

397.5

-26%



Runnymede

354

391.9

-26%



Guildford

474

315.3

-34%



Surrey

5,299

441.6

-20%



South East

40,769

442.3

-18%



England

230,254

407.2

-15%

All data is publicly available. Data is shown by specimen date - reporting delays mean data can be incomplete for the most recent days. For this reason the data shown is for the seven-day period ending four days prior to the publication date. The rate is calculated daily by Surrey County Council Public Health data intelligence team using the ONS 2019 mid-year population estimates. The 7-day average line on the chart is calculated using the average of cases for three days before, the date itself and the three days after any specific date. The average is not calculated for the most recent three dates as there is not enough data. For more detail please refer to the Surrey COVID Intelligence Summary at www.surreycc.gov.uk/covidcases and coronavirus.data.gov.uk

Hospital Admissions

There were **752** people admitted to hospital with COVID-19 in the last 7 days (24 October 2021 to 30 October 2021) in the South East.
This is **77** more admissions than the previous week (17 October 2021 to 23 October 2021).

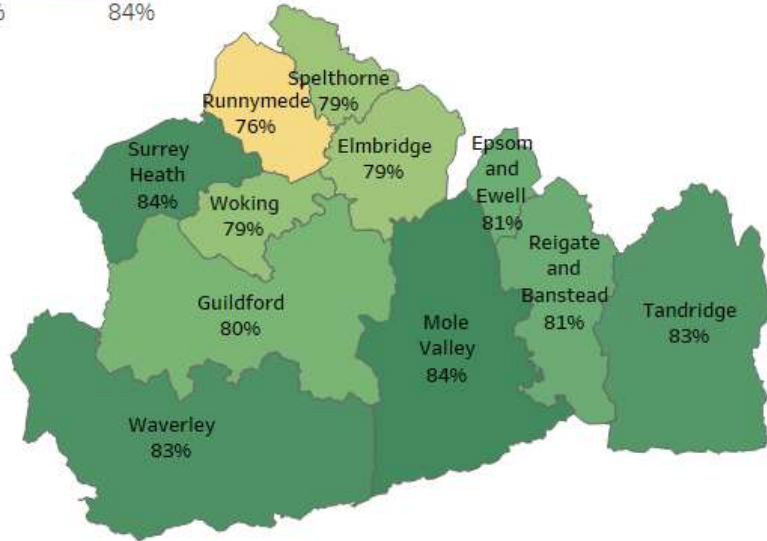
For a breakdown of hospital admissions by NHS Trust please see full report at www.surreycc.gov.uk/covidcases

For a breakdown of vaccinations by cohort, please see full report at www.surreycc.gov.uk/covidcases

Vaccinations

Data up to 31 October 2021

Percentage of 12+ population who have had at least 1 dose of a vaccine



1st Dose Uptake 2nd Dose Uptake

LTLA	1st Dose Uptake	2nd Dose Uptake
Elmbridge	79%	73%
Epsom and Ewell	81%	75%
Guildford	80%	74%
Mole Valley	84%	78%
Reigate and Banstead	81%	75%
Runnymede	76%	70%
Spelthorne	79%	73%
Surrey Heath	84%	78%
Tandridge	83%	77%
Waverley	83%	78%
Woking	79%	73%

5,671 people in Surrey have received their first dose, and **2,492** have received their second dose of a COVID-19 vaccination in this week (25 October 2021 to 31 October 2021).

In total **917,298** people (**81%** of the 12+ population) have received at least one dose of a vaccine, and **849,512** people (**75%** of the 12+ population) have received two doses of a vaccine (up to 31 October 2021).

81% of all people in the South East have had at least 1 dose of a vaccine, and **74%** have had a second dose.

77% of all people in England have had at least 1 dose of a vaccine, and **70%** have had a second dose.

Note: For more information on who is eligible for a vaccine please see www.nhs.uk/conditions/coronavirus-covid-19/coronavirus-vaccination/who-can-get-the-vaccine/

All data is publicly available at www.england.nhs.uk/statistics/statistical-work-areas/covid-19-vaccinations.

Vaccination figures are presented by date of vaccination as recorded on the National Immunisation Management Service (NIMS) database. Vaccination counts and populations by Lower Tier Local Authority (LTLA) are provided by Public Health England (PHE).

Surrey COVID-19 Summary Cases and Rates

Publication Date: Tuesday
2nd November 2021

All data is publicly available. Data is shown by Specimen Date and since these are incomplete for the most recent days, the period shown is for the seven day period ending five days prior to the publication date.

The rate is calculated daily by Surrey County Council Public Health Data Intelligence team using the ONS 2019 mid-year population estimates.

For more detail please refer to the [Surrey COVID Intelligence Summary](#) or the [Government Coronavirus Dashboard](#)

Date	Case
30 September 2021	542
1 October 2021	455
2 October 2021	534
3 October 2021	648
4 October 2021	849
5 October 2021	719
6 October 2021	644
7 October 2021	659
8 October 2021	696
9 October 2021	680
10 October 2021	817
11 October 2021	996
12 October 2021	863
13 October 2021	918
14 October 2021	888
15 October 2021	898
16 October 2021	803
17 October 2021	910
18 October 2021	1,121
19 October 2021	1,067
20 October 2021	1,028
21 October 2021	924
22 October 2021	859
23 October 2021	717
24 October 2021	701
25 October 2021	928
26 October 2021	785
27 October 2021	756
28 October 2021	766
29 October 2021	716
30 October 2021	647

Direction of change compared to previous 7 days (17 October – 23 October)	Area Name	Cases (7 days)	Rate (7 days)*
Decrease	Surrey	5,299	441.6

Data shown for time period Sunday 24 October 2021 to Saturday 30 October 2021

*Rate represents number of cases per 100,000 population for the last 7 days

Direction of change compared to previous 7 days (17 October – 23 October)	Area Name	Cases (7 days)	Rate (7 days)*	Percentage change compared to previous 7 days (17 October – 23 October)
Decrease	Surrey Heath	542	607.6	-22%
Decrease	Waverley	641	506.5	-18%
Decrease	Mole Valley	424	484.3	-13%
Decrease	Reigate and Banstead	704	471.7	-16%
Decrease	Woking	445	445.0	-30%
No change	Epsom and Ewell	359	443.2	-6%
Decrease	Elmbridge	593	432.2	-14%
No change	Tandridge	366	413.4	-6%
Decrease	Spelthorne	397	397.5	-26%
Decrease	Runnymede	354	391.9	-26%
Decrease	Guildford	474	315.3	-34%
Decrease	Surrey	5,299	441.6	-20%
Decrease	South East	40,769	442.3	-18%
Decrease	England	230,254	407.2	-15%

Surrey COVID-19 Summary Hospital Admissions

There were **752** people admitted to hospital with COVID-19 in the last 7 days (24th October to 30th October) in the South East.

This is **77** more admissions than the previous week (17th October to 23rd October).

For a breakdown of hospital admissions by NHS Trust please see full report at [Surrey COVID Intelligence Summary](#)

Surrey COVID-19 Summary Vaccinations Data up to 31st October

5,671 people in Surrey have received their first dose, and **2,492** have received their second dose of a COVID-19 vaccination this week (25th October to 31st October).

In total **917,298** people (**81%** of the 12+ population) have received at least one dose of a vaccine, and **849,512** people (**75%** of the 12+ population) have received two doses of a vaccine (up to 31st October).

81% of all people in the South East have had at least 1 dose of a vaccine, and **74%** have had a second dose. **77%** of all people in England have had at least 1 dose of a vaccine and **70%** have had a second dose.

District/Borough	Percentage of population having received one dose of a vaccine	Percentage of population having received two doses of a vaccine
Elmbridge	79%	73%
Epsom and Ewell	81%	75%
Guildford	80%	74%
Mole Valley	84%	78%
Reigate and Banstead	81%	75%
Runnymede	76%	70%
Spelthorne	79%	73%
Surrey Heath	84%	78%
Tandridge	83%	77%
Waverley	83%	78%
Woking	79%	73%

Note: For more information on who is eligible for a vaccine please see [NHS COVID-19 Eligibility](#)

All data is publicly available at [Government Coronavirus Dashboard](#)

Vaccination figures are presented by date of vaccination as recorded on the National Immunisation Management Service (NIMS) database. Vaccination counts and populations by Lower Tier Local Authority (LTLA) are provided by Public Health England (PHE).