

# Prevent Strategy

The Counter Terrorism and Security Act received Royal Assent on 12 February 2015 and states a specified authority must, in the exercise of its functions, have due regard to the need to prevent people from being drawn into terrorism.' For Surrey this means that the Surrey County Council has a duty to lead the coordination of local partners in actively preventing people from being drawn into terrorism.

## The Prevent agenda

The government's counter terrorism strategy is known as CONTEST (2011). There are four strands to CONTEST of which Prevent is one. The strands of the strategy are as follows:

**Pursue:** is concerned with the apprehension and arrest of any persons suspected of being engaged in the planning, preparation or commission of a terrorist act.

**Prevent:** is concerned with working with partners to reduce support for terrorism of all kinds, challenging and isolating extremists whose views are shared by terrorist organisations and challenging and isolating extremists operating on the internet.

**Protect:** aims to strengthen our protection against a terrorist attack and reduce our vulnerability to such attacks. This involves managing the risks to crowded places and the safeguarding of hazardous materials.

**Prepare:** seeks to mitigate the impact of a terrorist attack where that attack cannot be stopped. This included work to bring a terrorist attack to an end and to increase our resilience so we can recover from its aftermath.

The purpose of the Prevent strategy (2011) is to stop people becoming terrorists or supporting terrorism. Whilst the percentage of people willing to support violent extremism in the UK is small evidence identifies that terrorist and violent extremist organisations exploit vulnerabilities to spread their rhetoric and gain support. The UK government has identified factors that may lead to individuals supporting and/ or engaging in terrorist related activity. Understanding and targeting these factors is crucial to prevent radicalisation and minimise the risks it poses to the national security.

The Prevent Strategy aims to:

- Respond to the ideological challenge of terrorism and the threat we face from those who promote it.

- Prevent people from being drawn into terrorism and ensure that they are given appropriate advice and support.
- Work with sectors and institutions where there are risks of radicalisation, which we need to address.

## Terrorism in the UK context

The Prevent strategy (2011) identified 4x types of terrorism that the UK faces, these being:

- **International**, the most significant current threat comes from Al Qa'ida its affiliates and like minded organisations.
- **Northern-Ireland related**, although the responsibility of the Secretary of State for Northern Ireland the prevent principles are applicable.
- **Extreme right-wing**
- **Other**, these are often small movements in reaction to a single issue, a specific incident, or ideology

Tackling extremism in the UK (2013) highlighted a number of key public institutions where extremists can take advantage and share their ideology with others. The Government also identified, through the extremism task force (2014), that it needed to do more to address extremism in locations where it can exert control, these include:

- Schools
- Universities and further education

Prisons

Locally the prevent partnership group shares a responsibility to monitor these areas and implement preventative initiatives where necessary.

## Local management of Prevent

Across Surrey the Community Safety Unit on behalf of Surrey County Council will coordinate the Prevent strategy. The Prevent duty guidance published alongside the Counter Terrorism and Security Act 2015 sets an expectation that the coordinator will:

- Establish or make use of an existing local multi-agency group to agree risk and co-ordinate prevent activity.
- Use the existing counter-terrorism local profiles to begin to assess the risk of individuals being drawn into terrorism.
- Engage with Prevent coordinators, schools, universities, colleges, local prisons, probation services, health, immigration enforcement and others as part of the risk assessment process.
- Mainstream the prevent duty so it becomes part of the day-to-day work of the authority, in particular children' safeguarding.
- Any local authority that assesses, through the multi-agency group, that there is a risk will be expected to develop a Prevent action plan.
- Ensure frontline staff have a good understanding of Prevent, are trained to recognise vulnerability to being drawn into terrorism and are aware of available programmes to deal with this issue.

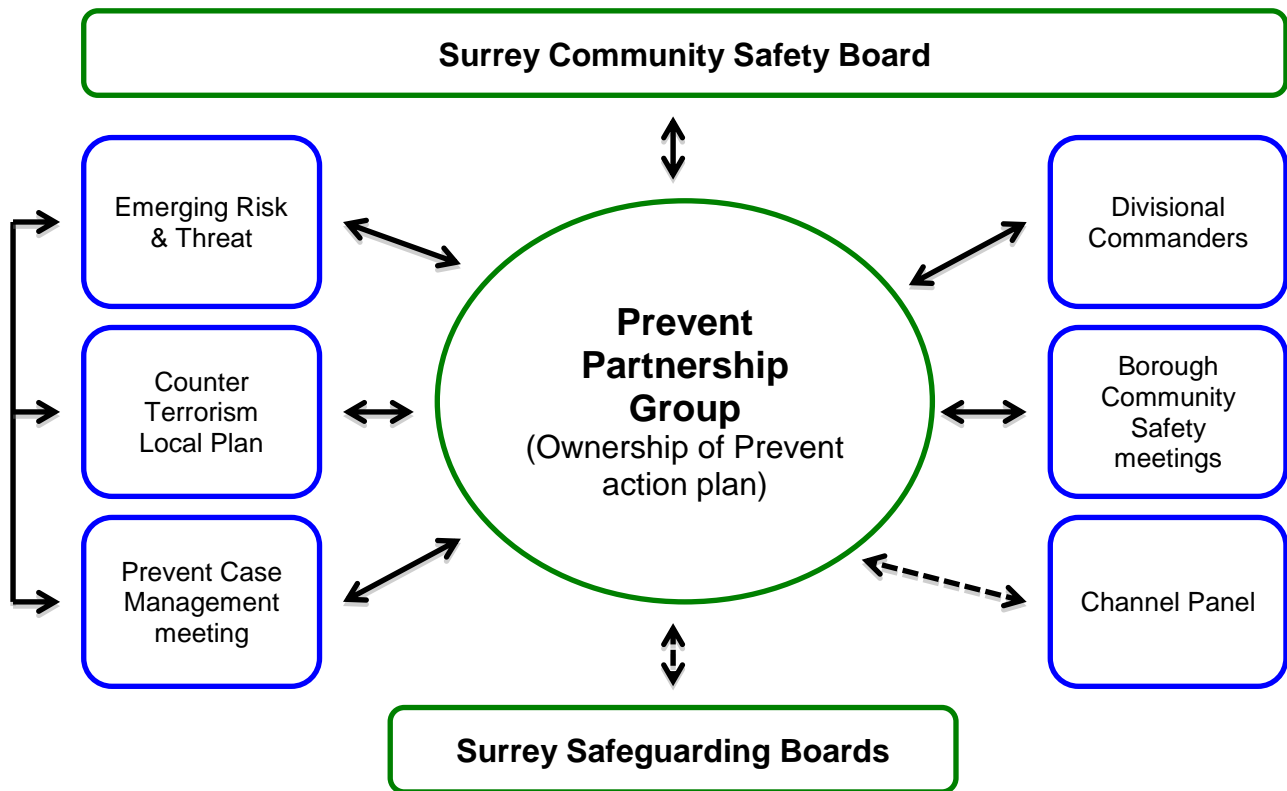
The coordinating authority responsible for the Prevent Partnership Group, this carries the following responsibilities:

- Organise and facilitate a multi-agency Prevent Partnership group
- Act as local experts for strategy and delivery
- Develop and manage the local Prevent strategy
- Devise and implement projects
- Work in partnership with other sectors and the community, with outreach where these groups are less engaged

To this effect the Community Safety unit as coordinator has identified key organisations to form part of this panel. The panel will consist of representation from:

- Prisons/ Criminal Justice
- Surrey Police
- Education/ Higher education
- Health and Social Care
- Community safety leads
- Fire and Rescue service

The Prevent Partnership Group lives within a wider system of governance, forums and meetings all of which play a key role in delivering Prevent. The diagram below illustrates how the prevent work interacts with existing forums.



**Key**

**Police Led**

**SCC Led**

**Contact**

Gordon.falconer@surreycc.gov.uk

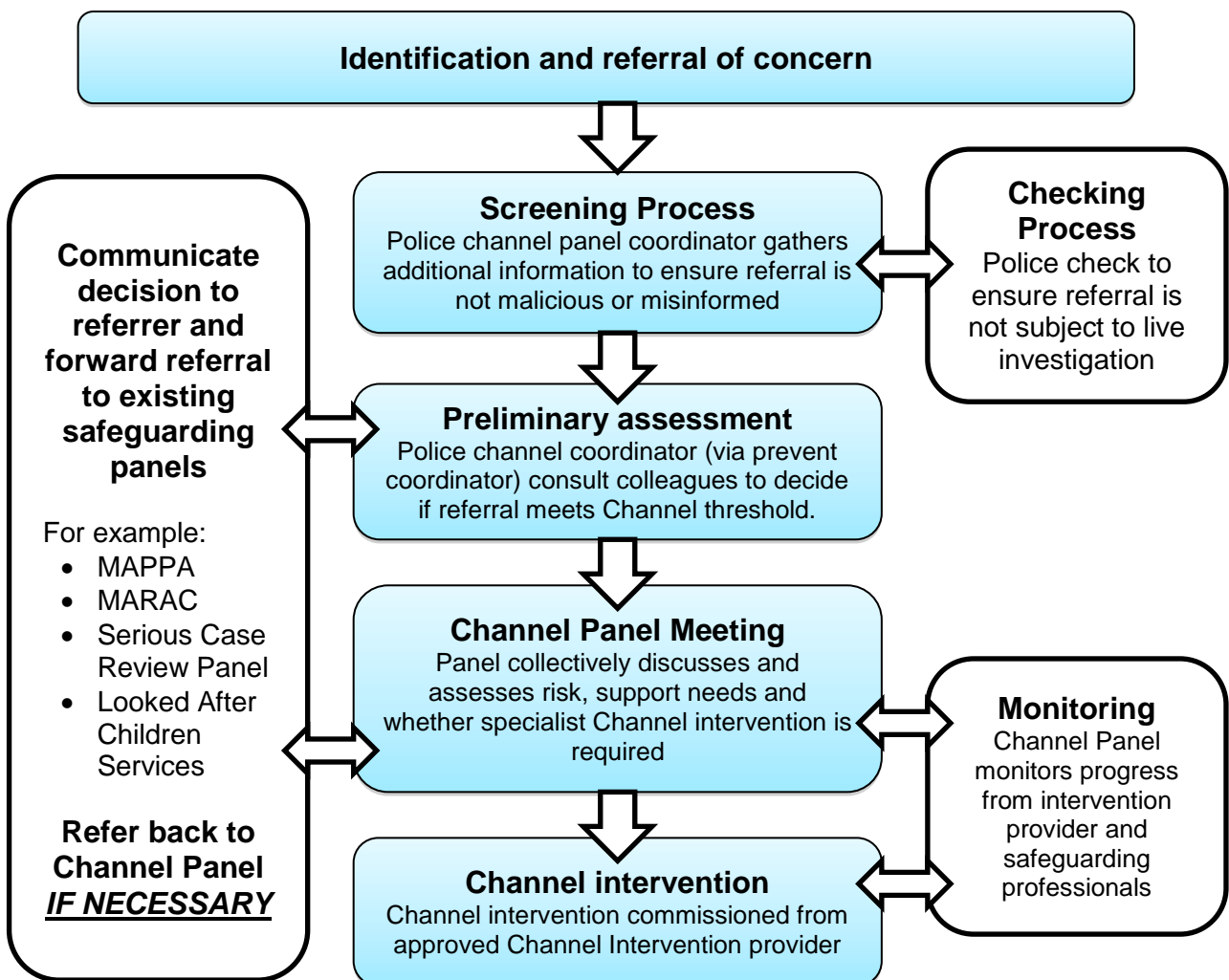
# Channel Panel

The Channel process is essentially a safeguarding programme aimed at supporting individuals identified as vulnerable to being drawn into violent extremism or terrorist related activity. As with other safeguarding practices Channel is reliant on a multi agency response and multi disciplinary work to minimise and manage the risk to an individual. Channel is voluntary and so the individual must provide consent. It draws on existing collaboration between local authorities, the police, statutory partners and the local community and has three objectives:

- Identify individuals at risk of being drawn into radical extremism
- Assess the nature and extent of the risk
- Develop the most appropriate support for the individuals concerned.

The Counter Terrorism and Security Act (2015) provides a statutory framework for a joint local authority/ police panel to assess the extent to which identified individuals are vulnerable to being drawn into terrorism and to put in place a support plan. This effectively places Channel on a statutory footing. The Act sets out that these panels are to be chaired by the responsible local authority, which across Surrey is the Community Safety Unit.

The diagram below illustrates the Channel Panel process:



## Work that will be complete by September 2015

As the new owner of Prevent the Community Safety Unit pledges to complete the following by September 2015:

- Establishment of Prevent Partnership Group.
- Channel Panels reviewed and new processes implemented.
- Terms of reference submitted for all new forums.
- Distribution, evaluation and review of Prevent questionnaire from each key partner.
- Branding and any other required communications work.
- Work to establish and identify a relationship with neighbouring authorities.

## Next Steps, your role as a key partner

All key partners are required to complete the attached questionnaire which is designed to identify current provision and provide an understanding of who delivers this. This will provide a comprehensive understanding of where we currently are as a sector and identify the work we need to undertake in the future. The completed questionnaires will be assessed by the Prevent Partnership Group who will oversee the delivery of all relevant organisations Prevent action plans.

It is integral to the success of the programme that all questionnaires are returned by **July 21<sup>st</sup> 2015**.

# Agency Prevent action plan templates 2015/16

<b>Sector: Local authorities – County Council</b>			
<b>Action</b>	<b>Owner</b>	<b>Update</b>	<b>Status</b>
<b>Partnership</b>			
Identify and maintain a Prevent lead to act as a single point of contact on Prevent matters			
Prevent to sit as a standing item on the County wide Community safety board.			
Maintain a link between the Prevent partnership board and both Children's and Adult safeguarding boards.			
Maintain a county wide, multi agency, Prevent partnership group to monitor and assess the impact of Prevent work			
Maintain a Prevent action plan to effectively manage local risk, threat and vulnerability			
Agree proportionate arrangements for sharing risk assessment and agreeing Prevent action plans with Borough and District authorities			
Internal and external procedures in place to share information about vulnerable individuals including information sharing agreements.			
Support the Channel project by chairing multi agency Channel panels and ensuring the panels are fit for purpose.			
Ensure involvement of local communities within Prevent and assess local impact of activity on these communities			
<b>Risk assessment</b>			
Support the process of the CTLP including attending multi agency briefings and providing relevant			

information and input to the process			
Incorporate Prevent duty into local authority led safeguarding policies such as those identifying children at risk			
<b>Staff Training</b>			
Ensure front line staff have a good understanding of Prevent and are able to recognise vulnerabilities.			
Ensure front line staff understand the referral process into Channel and how it manages individuals vulnerable to being drawn into terrorism			
<b>Use of Local authority premises</b>			
Ensure publicly used premises are not used by extremist organisations			
Ensure organisations working with the local authority are not engaged in extremist activity			
<b>Safety Online</b>			
IT equipment available to the general public should use filtering solutions to limit access to extremist material			
IT policies in place to ensure staff are protected from terrorist related content			
Local authority to host Prevent related material on its public facing website			
<b>Supporting children</b>			
Private and voluntary organisations providing children's services are included and aware of local authority safeguarding policies			
Gain understanding of out of school settings including supplementary schools, youth groups and tuition centres			
Ensure these locations have appropriate safeguarding measures in place			

<b>Sector: Local authorities – Borough / District</b>			
<b>Action</b>	<b>Owner</b>	<b>Update</b>	<b>Status</b>
<b>Partnership</b>			
Identify and maintain a Prevent lead to act as a single point of contact on Prevent matters			
Prevent to sit as a standing item on local specific community safety boards			
Attend the county wide, multi agency, Prevent partnership group meetings			
Maintain a Prevent action plan to effectively manage local risk, threat and vulnerability			
Internal and external procedures in place to share information about vulnerable individuals including information sharing agreements.			
Support the Channel project by attending and supporting multi agency Channel panel meetings where relevant			
Ensure involvement of local communities within Prevent and assess local impact of activity on these communities			
<b>Risk assessment</b>			
Support the process of the CTLP including attending multi agency briefings and providing relevant information and input to the process			
Incorporate Prevent duty into local authority led safeguarding policies such as those identifying children at risk			
<b>Staff Training</b>			
Ensure front line staff have a good understanding of Prevent and are able to recognise vulnerabilities.			



Ensure front line staff understand the referral process into Channel and how it manages individuals vulnerable to being drawn into terrorism			
<b>Use of Local authority premises</b>			
Ensure publicly used premises are not used by extremist organisations			
Ensure organisations working with the local authority are not engaged in extremist activity			
<b>Safety Online</b>			
IT equipment available to the general public should use filtering solutions to limit access to extremist material			
IT policies in place to ensure staff are protected from terrorist related content			
Local authority to host Prevent related material on its public facing website			
<b>Supporting children</b>			
Private and voluntary organisations providing children's services are included and aware of local authority safeguarding policies			
Gain understanding of out of school settings including supplementary schools, youth groups and tuition centres			
Ensure these locations have appropriate safeguarding measures in place			

<b>Sector: Higher education</b>			
<b>Action</b>	<b>Owner</b>	<b>Update</b>	<b>Status</b>
<b>Partnership</b>			
HE institutions must be actively involved in the county wide Prevent delivery group			
Incorporate Prevent within a the institutes cross department safeguarding policies			
Maintain regular contact with the regional HE/FE Prevent coordinator			
Internal and external procedures in place to share information about vulnerable individuals including information sharing agreements.			
<b>Risk assessment</b>			
Risk assessment in place to identify how students may be at risk of being drawn into terrorism			
Prevent incorporated into institutions safeguarding, student welfare and staff welfare policies			
<b>Action plan</b>			
Establish institute specific Prevent action plans should any risk be identified			
<b>Staff training</b>			
Prevent awareness training in place to ensure all staff are able to recognise vulnerabilities to terrorism			
<b>Welfare and pastoral support</b>			
Sufficient chaplaincy and pastoral support in place for all students			
<b>Speakers and events</b>			
Policies and procedures are in place for events held by students, staff and visitors.			

Protocols in place to share information on events with partner agencies			
<b>Safety Online</b>			
On campus IT policies in place to ensure students are protected from terrorist related content			
Policies in place for staff and students working on sensitive or extremism related research			
<b>Student Unions and societies</b>			
Policies in place outlining activities not allowed to take place on campus			
Student Unions made aware of Prevent and their responsibilities under the strategy. Consider benefit of Prevent awareness training.			

<b>Sector: Further education</b>			
<b>Action</b>	<b>Owner</b>	<b>Update</b>	<b>Status</b>
<b>Partnership</b>			
Active engagement between governors, principals, managers and local authority Prevent coordinators			
Maintain an identified Prevent lead within the institution			
Maintain regular contact with the regional FE coordinator			
Internal and external procedures in place to share information about vulnerable individuals including information sharing agreements.			
<b>Risk assessment</b>			
Ensure Prevent is incorporated within an institutes safeguarding policies			
Policies and procedures are in place for events held by students, staff and visitors.			
Robust procedures in place for ensuring sub contracted delivery of courses does not lead to funding extremist organisations			
<b>Staff training</b>			
Prevent awareness training in place to ensure all governors and staff are able to recognise vulnerabilities to terrorism			
<b>Welfare and pastoral support</b>			
Sufficient chaplaincy and pastoral support in place for all students			
<b>Speakers and events</b>			
Policies and procedures are in place for events held by students, staff and visitors.			
Protocols in place to share			

information on events with partner agencies			
<b>Safety Online</b>			
On site IT policies in place to ensure students are protected from terrorist related content			
Policies in place for staff and students working on extremism or terrorist related research or projects			

<b>Sector: Schools</b>			
<b>Action</b>	<b>Owner</b>	<b>Update</b>	<b>Status</b>
<b>Risk assessment</b>			
Assess the risk of children being drawn into terrorism based on potential risk in the local area			
Prevent incorporated into safeguarding policies to ensure children are protected from being drawn into terrorism			
Ensure fundamental British values are promoted within the school's curriculum and conduct			
Clear protocols in place to ensure visiting speakers are suitable and well supervised			
<b>Partnership</b>			
Ensure safeguarding procedures work alongside those of the local authority and other partner agencies			
<b>Staff training</b>			
Prevent awareness training in place to ensure all staff are able to recognise vulnerabilities to terrorism			
<b>Safety Online</b>			
Appropriate filtering and IT policies in place to ensure students are protected from terrorist related content			

<b>Sector: Health sector</b>			
<b>Action</b>	<b>Owner</b>	<b>Update</b>	<b>Status</b>
<b>Partnership</b>			
Ensure information sharing agreements are in place with other sectors			
<b>Risk assessment</b>			
All NHS trusts to have a dedicated Prevent lead			
<b>Staff training</b>			
Ensure front line staff have a good understanding of Prevent and are able to recognise vulnerabilities.			
Staff understand how to balance patient confidentiality with Prevent duty			

<b>Sector: Probation</b>			
<b>Action</b>	<b>Owner</b>	<b>Update</b>	<b>Status</b>
<b>Partnership</b>			
Active participation in local community safety partnerships			
Designated CT lead in place			
<b>Risk assessment</b>			
Risk assessment in place to identify those at risk from being drawn into terrorism			
<b>Staff training</b>			
Prevent awareness training in place to ensure all staff are able to recognise vulnerabilities to terrorism			

<b>Sector: Police</b>			
<b>Action</b>	<b>Owner</b>	<b>Update</b>	<b>Status</b>
<b>Prosecute, disrupt and deter extremists</b>			
Prevent case management processes in place and in line with national guidance to effectively manage threat risk and vulnerability			
Support institutions around the management of extremist speakers			
<b>Vulnerable individuals</b>			
In partnership with other agencies consider appropriate interventions to support vulnerable individuals			
Work in partnership and support Channel panels			
Support existing and identify potential new intervention providers			
<b>Partnership</b>			
Engage fully with the local Prevent partnership board			
Support the implementation of a Prevent action plan			
Act as a conduit for Channel referrals and coordinate the delivery of the Channel programme			
Provide partner agencies with the Counter terrorism local profile document			
<b>Community resilience</b>			
Support partner agencies in developing Prevent related projects			
Support the charity commission in providing guidance to communities regarding the use of money being			



used to fund terrorist activities			
Collate and analyse community tension reporting			

# Bibliography

Prevent strategy (2011), HM Government. Online resource available at:  
[https://www.gov.uk/government/uploads/system/uploads/attachment\\_data/file/97976/prevent-strategy-review.pdf](https://www.gov.uk/government/uploads/system/uploads/attachment_data/file/97976/prevent-strategy-review.pdf)

Contest Strategy (2011), HM Government. Online resource available at:  
[https://www.gov.uk/government/uploads/system/uploads/attachment\\_data/file/97995/strategy-contest.pdf](https://www.gov.uk/government/uploads/system/uploads/attachment_data/file/97995/strategy-contest.pdf)

Tackling extremism in the UK (2013), HM Government. Online resource available at:  
[https://www.gov.uk/government/uploads/system/uploads/attachment\\_data/file/263181/ETF\\_FINAL.pdf](https://www.gov.uk/government/uploads/system/uploads/attachment_data/file/263181/ETF_FINAL.pdf)

Counter Terrorism and Security Act (2015), HM Government. Online resource available at:  
[http://www.legislation.gov.uk/ukpga/2015/6/pdfs/ukpga\\_20150006\\_en.pdf](http://www.legislation.gov.uk/ukpga/2015/6/pdfs/ukpga_20150006_en.pdf)

Serious and Organised Crime Strategy (2013), HM Government. Online resource available at:  
[https://www.gov.uk/government/uploads/system/uploads/attachment\\_data/file/248645/Serious\\_and\\_Organised\\_Crime\\_Strategy.pdf](https://www.gov.uk/government/uploads/system/uploads/attachment_data/file/248645/Serious_and_Organised_Crime_Strategy.pdf)

Serious Crime Act, (2015). HM Government. Online resource available at:  
[https://www.gov.uk/government/uploads/system/uploads/attachment\\_data/file/417131/20150325SeriousCrimeActCircular.pdf](https://www.gov.uk/government/uploads/system/uploads/attachment_data/file/417131/20150325SeriousCrimeActCircular.pdf)

Modern Slavery Act (2015). HM Government. Online resource available at:  
[http://www.legislation.gov.uk/ukpga/2015/30/pdfs/ukpga\\_20150030\\_en.pdf](http://www.legislation.gov.uk/ukpga/2015/30/pdfs/ukpga_20150030_en.pdf)

*Channel Duty Guidance: Protecting vulnerable people from being drawn into terrorism* (2015).  
Online resource available at:  
[https://www.gov.uk/government/uploads/system/uploads/attachment\\_data/file/425189/Channel\\_Duty\\_Guidance\\_April\\_2015.pdf](https://www.gov.uk/government/uploads/system/uploads/attachment_data/file/425189/Channel_Duty_Guidance_April_2015.pdf)