

COUNCIL TAX 2023/24

NO
ONE
LEFT
BEHIND



As your County Council, we provide a wide range of services for the people of Surrey. Your Council Tax is vital to pay for the things people rely on for a good quality of life, all outlined below.

Rising costs mean these things are getting more expensive to deliver, however we are in a sound financial state and do not need to raise Council Tax by the full amount the government allows. The Surrey County Council element of your Council Tax will rise by 2.99%* this year, 2% less than the majority of other councils and well below inflation.

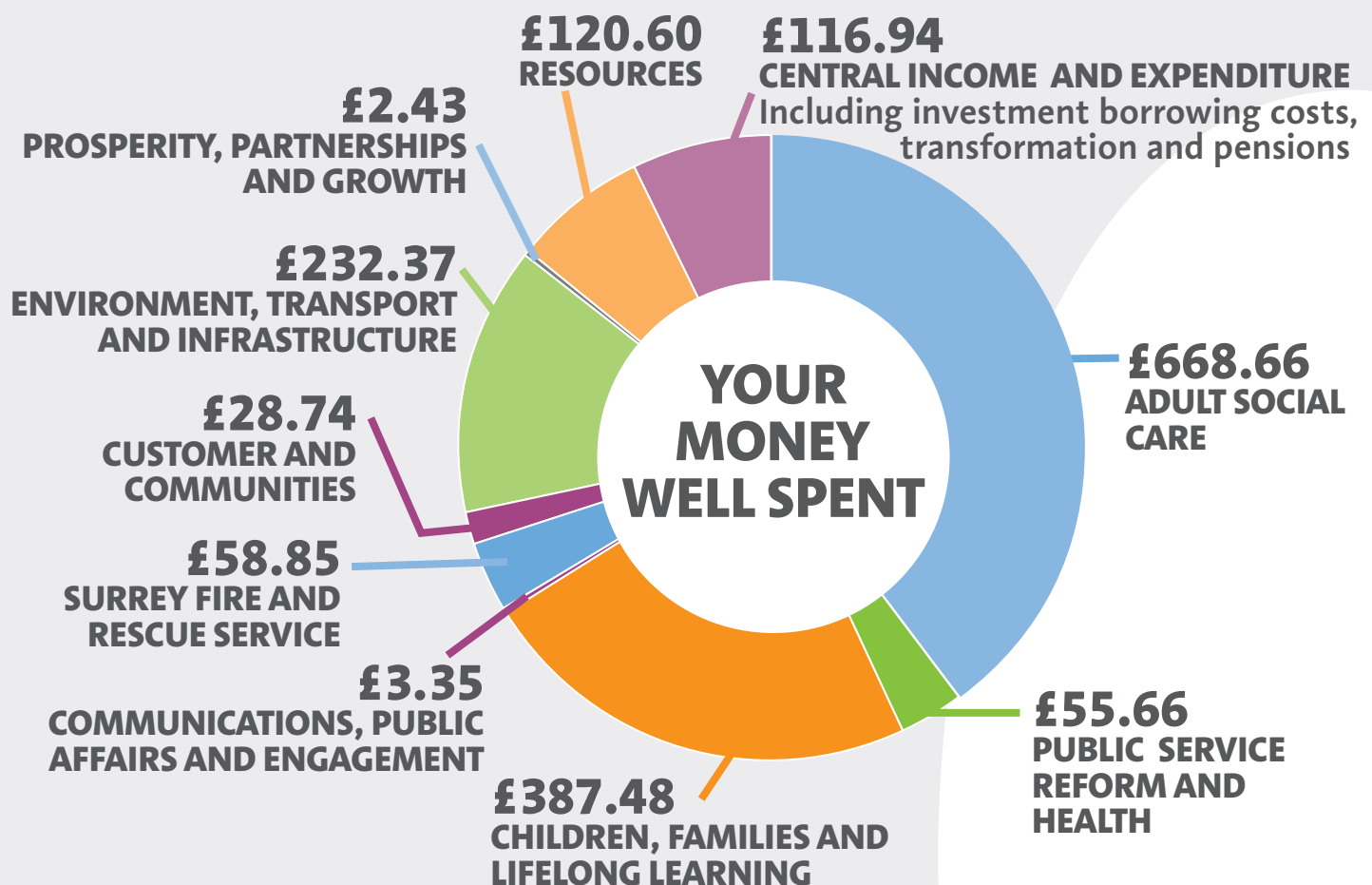
We recognise that people's household budgets are under severe pressure, which is why we've kept any increase to the minimum we can afford to protect services, which our most vulnerable residents rely on.

Tim Oliver, Leader of Surrey County Council



*This rise, made up of a 0.99% increase and a 2% levy for Adult Social Care, is equivalent of £0.94p per week for the average Band D Council Tax bill.

The average Band D Council Tax per year is £1675.08**, here's how your money is spent:



**For illustrative purposes, this represents the total budget split by the Band D Council Tax value. Some areas are funded by specific restricted grants, which are not reflected here. This is the County Council's Band D figures only and does not include amounts raised by District & Borough Councils, Surrey Police or Parish Councils.

INVESTING IN SURREY'S FUTURE

As well as day-to-day spending on services (see overleaf), the Council's budget also sets out one-off investment over the next five years, which includes:

£60m

On community projects
via Your Fund Surrey

**YOUR
FUND
SURREY**



£181m

On more provision for children
with additional needs and
disabilities

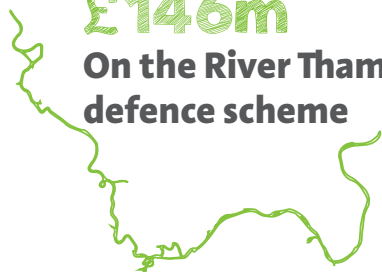
£188m

On improving
Surrey's roads
and pavements



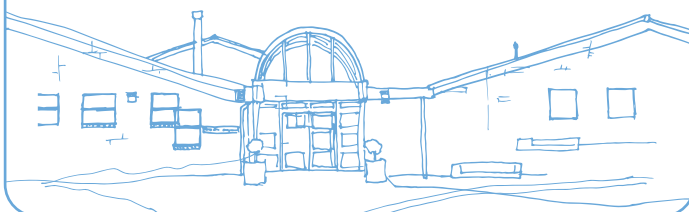
£146m

On the River Thames flood
defence scheme



£57m

On improving school buildings and
facilities



£103m

On providing
more school
places and buildings



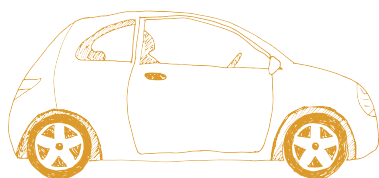
£54m

On improving and maintaining
bridges and other specialist
infrastructure



£75m

On maintaining and
improving public
buildings, offices and
community
facilities



£38m

On A320 North of Woking and Junction 11 of M25 road
and junction improvements

For more information about our budget and Council
Tax, please visit surreycc.gov.uk/yourmoney

If you would like this information in Easy Read version,
large print, Braille, in audio or in another language or
format, please contact us on:

Tel: 03456 009 009

Email: contactcentre@surreycc.gov.uk

Textphone (via Text Relay): 18001 03456 009 009

SMS: 07860 053465

SURREY matters

**Scan the QR
code to read and
sign up to the
Surrey Matters
monthly e-newsletter**

