



Surrey Fire and Rescue Service Waverley Borough Plan

2023/24

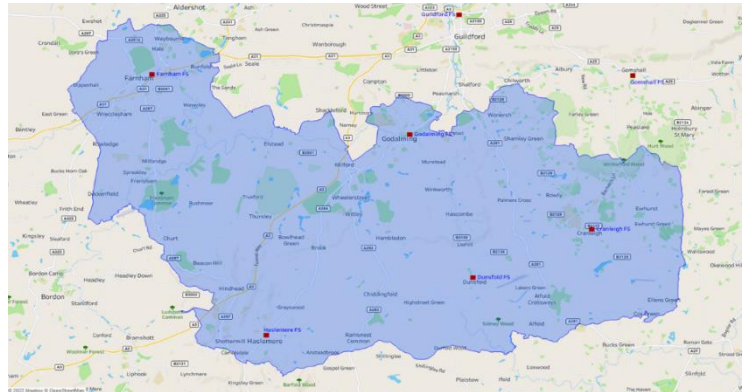


SURREY
COUNTY COUNCIL

Welcome

Welcome to Surrey Fire and Rescue Service's Borough Plan for Waverley. Places in the Borough include Godalming, Farnham and Haslemere. The Service has stations in Godalming, Farnham, Haslemere, Dunsfold and Cranleigh.

As part of our commitment to keeping communities safe, Surrey Fire and Rescue Service produces tailored station plans to show what our local priorities are and how we are working with other agencies in the area to improve the local quality of life. To do this, we set specific goals/benchmarks in each area to address the issues particularly relevant to that area.



The Borough Plan is a public document and is available to everybody. For our staff, it gives clear direction in setting annual priorities and projects. For the public, it gives a clear indication of what we will be focusing on in the local area and what we aim to achieve as a result. It allows us to address risks at a local level, putting the right resources into the right areas to ensure we reduce the risks faced by everybody in that borough. It also enables us to work with other agencies such as the police and health services to ensure that, where a local trend cannot be resolved by one service alone, we work together to achieve improved outcomes for the community.

Surrey Fire and Rescue Service also recognises that, to achieve our strategic aims and objectives, we must have a diverse risk managed approach. This will be tailored to local needs ensuring that it provides value for money.

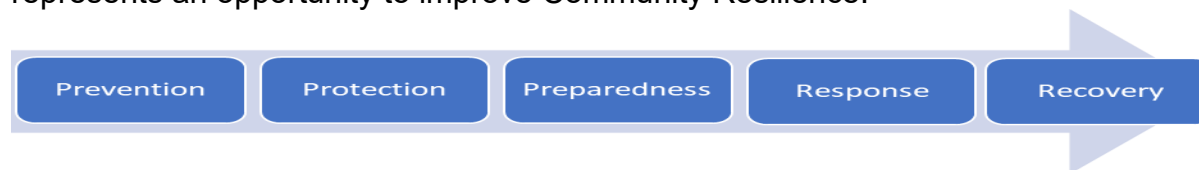
Our Priorities

The Borough Plan supports the principal aim of the [Making Surrey Safer Plan](#) to deliver high performing services. We do this to keep our communities safe along with our partners.

In 2023/24 we will be prioritising the local delivery of certain key business and community safety activities, to improve the safety of our residents and staff, while providing maximum use of our available time.

We aim to identify where our prevention and protection efforts yield results, how well we react when called upon to respond and mitigate an emergency, and where we can assist the community in recovery even before we leave the scene of an incident.

We expect to interact with people at one or more of five contact points. Each contact point represents an opportunity to improve Community Resilience:



To manage our resources more efficiently and effectively, focusing resources to protect those at higher risk.

We aim to provide a service offer that is broader than solely 'time to respond' and recognise that the urban and rural response is different.

We will establish new measures based upon business and community safety activity as well as response.

We will create a 'centrally led, locally delivered' approach, that better aligns our teams with areas of risk within Surrey and develops consistency across the county in how we deliver our services to ensure we keep our residents as safe as possible.

Prevention

Stopping incidents from happening and keeping people safe is at the heart of our Prevention teams and activities.

We will improve the way we collect and share data intelligence so we can better identify the people in our communities who need the most care and attention and provide the right support to keep them safe. This will be through several interventions from online advice to community events through to targeted Safe and Well Visits (SAWVs). We are tackling the issues of changing behaviours and how we deliver SAWVs to the public, also how we can educate the ongoing support network agencies and partners involved in supporting an individual, to recognise and take action when they feel that an intervention needs ongoing work and engagement. By working with partners, we will support them to provide fire information in the home when they visit while SFRS provides a referral route and source of information from the partners.

We will continue to support Children and Young People through schools' education, Youth Engagement Scheme and Fire Cadets in some of our fire stations. This is the start of our lifelong learning and covers all aspects of life such as fire safety, water safety and road safety through the successful Safe Drive Stay Alive presentations. The 'lifelong learning' concept delivers key safety advice and information throughout resident's lives via schools, colleges, and universities as well as adult learning centres and other organisations where groups of individuals meet up.

We will provide road safety advice and interventions across the county through programmes like Biker Down and continue to engage with road users to highlight the risks of dangerous or careless driving. This will also include working closely with partners to keep all road users safe.

We will continue to develop the kind of emergencies we aim to prevent to include water and wildfire safety work. Activities like providing water safety throw lines at strategic locations and expanding our wildfire K9 volunteers will support this work.

Work with partner agencies which includes tackling social issues together in partnership and raising a concern when we see one. This includes our work in providing safe havens for survivors of domestic abuse and work to reduce the impact of serious and organised crime.

Protection

Reducing the frequency and mitigating the impact of emergencies and fires on businesses in Surrey is a key role for all our teams supported by the specialists in Protection. Effective fire safety and emergency management is key to keeping the buildings and people of Surrey, safer. We will educate businesses at all risk levels through Business Education Officers, Auditors, Inspectors and Operational crews to reduce the likelihood and impact of any incidents.

Through our Risk Based Inspection Programme and use of data, we will ensure that we are targeting the right premises from low to high risk that we formally inspect. We will aim to educate at first point of contact, only enforcing where necessary.

We will liaise with planners and building control to ensure we have input on the design and safety of buildings in our areas and share this knowledge with operational teams to ensure they are aware of the risks to them and can act appropriately to conduct visits and create plans for if an incident occurs.

Our partnership working will allow us to target groups more effectively that have historically seen higher levels of enforcement. We will use these relationships to remove myths and promote an effective and realistic approach to fire safety.

We will support our operational crews in identifying building risks to them through ongoing training and advice, increasing their knowledge and ability to act on advice or understand how buildings will behave when attending an incident.

Through continued work with the NFCC and Fire Standards Board, we will ensure that we have the right people with the right qualifications and experience to deliver on our legal obligations in enforcing the Fire Safety Order.

Our work will be assured effectively to ensure we are delivering to the highest standards consistently and that we are making a positive difference to businesses and people in Surrey.

Preparedness

Whilst we work hard in reducing emergencies and keeping people safe, we know we can achieve more when working in partnership. SFRS will work with local partners to make every contact count. We are part of the local Community Safety Partnership where agencies work together in reducing harm to our residents. Example of this engagement include working with local authorities on anti-social behaviour, crime reduction and working with vulnerable residents.

SFRS are part of the Local Resilience Forum (LRF) where we are part of the planning and response to major incidents in the county and nationally. We regularly meet with our partners and undertake joint exercises to test our response.

Our personnel continually train to maintain their competence providing an efficient and effective response to emergencies.

Our personnel also make Safe and Well Visits to residents and businesses within their local areas. These visits are just part of what SFRS delivers to keep the community safe. Other areas

include providing business fire safety and safety in the community for events.

All activities feed into our Data and Intelligence teams, enhancing our understanding of individuals, community risks and vulnerabilities. This intelligence will also raise the awareness of the risks for our staff.

Response

We continue to develop our response model, to allow us to mobilise a range of vehicles, equipment and personnel in a more flexible way, considering type, level and speed of our response requirements. This will be based on traditional fire engines but also on other capabilities and personnel required to bring the incident to a satisfactory conclusion.

Surrey is 'land-locked' and surrounded by other counties with Fire and Rescue Services which means cross-border working, eg, Surrey into Hampshire, is commonplace. We will always mobilise the closest and most appropriate appliance to all emergencies, to ensure the quickest response to any incident irrespective of borders.

We employ both On-Call and Wholetime firefighters and regard them as equal. We are streamlining career pathways so that staff who want to can move seamlessly between teams/locations or move from On-call to Wholetime. A positive culture and diverse workforce play a big part within our ongoing transformation programme.

As Surrey is a diverse land area in terms of land usage and population density, we respond to more than just fires and road traffic collisions, and as such we will include response to include water and wildfire and other risks that present themselves to support the communities.

Recovery

Recovery begins before the last appliance has left the scene of any emergency and is actively started within the early stages of any incident, minor or major.

As emergencies are disruptive events, it is imperative that the return to a new normality is a conscious thought within the mind of the Incident Commander, Tactical Coordinating Group, and/or Strategic Coordinating Group (SCG), as appropriate.

The process of recovery can involve a multi-agency coordinated effort and we are able to work effectively within established structures in support of this.

Recovery must focus upon the people and places impacted by an event. We have designed our Post Incident Protocols to give immediate support those people, places and premises affected by an emergency, through the coordination of our partners and Service Delivery teams.

Recovery presents an opportunity to reactively and proactively utilise the other contact points for those individuals and communities immediately involved, and those more broadly aware of and concerned by the answer to 'What if it happens to me?' and 'What should I do in that situation?'.

The County of Surrey

Geography

Surrey is approximately 648 sq miles (1,679 sq km) in size. It is landlocked and has no coastline. Surrey is bordered by Greater London, Kent, East Sussex, West Sussex, Hampshire and Berkshire.

Population

According to the last census data available (2021) the population of Surrey was 1.2 million. The county rates highly in environmental terms. Surrey is England's most wooded county and over 70% of its land lies within the greenbelt. However, per square mile, it is the most densely populated shire county in England. The most densely populated area is Epsom and Ewell Borough, with an average population of over 24 people per hectare of land, in contrast with the least densely populated which is the Tandridge District with a density of 4 people per hectare of land.

Transport

Surrey is served by two of the world's largest international airports on its borders, Gatwick and Heathrow. Most major towns in Surrey have connections by rail to central London with a frequency of under one hour.

The county has more cars per mile of road than any other UK shire, containing some of the country's busiest arterial routes such as the M3, A3, M25 and M23. There are more than 3,000 miles of highway in the county, including almost 70 miles of motorway.

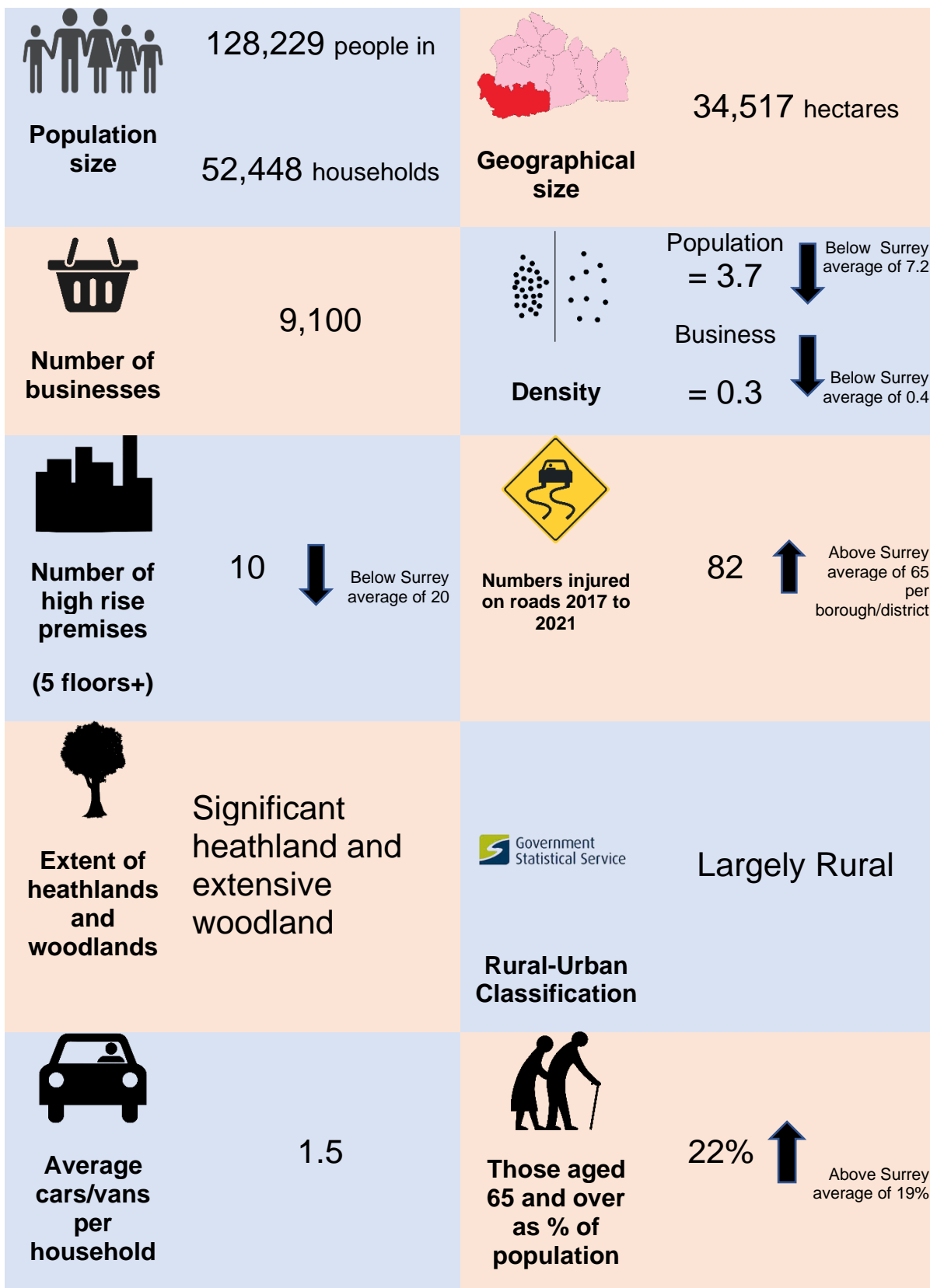
Employment

The main employment is concentrated in the central towns of Guildford and Woking, to the west in Camberley and Staines and to the east in Leatherhead, Dorking and Reigate. Employment levels are very high, although the county's commercial premises have varying levels of occupancy. The unemployment figure remains around 2%.

Education

There are approximately 286,000 children and young people aged 0 to 19 in the county (2021 census). There are over 700 schools and colleges in Surrey providing education up to compulsory attendance age, and education is Surrey County Council's single biggest area of expenditure. The county has three established Universities: Surrey, Royal Holloway and the University for the Creative Arts. Together these universities have around 36,000 undergraduate and postgraduate students.

Living in Waverley





% of pensioners living alone

33%



Around Surrey average of 33%

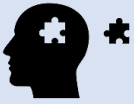


% single person households

11%



Around Surrey average of 11%



Prevalence of some mental health disorders for those 18 to 64 (per 1,000 people)

137



Below Surrey average of 148



% of population with mobility issues

8%



Around Surrey average of 7%



% of population with learning disabilities, autistic spectrum disorders or Down's syndrome

2.5%



Around Surrey average of 2.6%



% people who smoke

9%



Below Surrey average of 10%



Persons aged 18 to 64 with alcohol related conditions or drug dependency (per 1,000 people)

42



Around Surrey average of 45

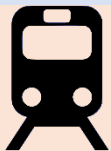


Number of listed buildings

117



Above Surrey average of 42



Number of railway lines running through area

3



Proximity to airports

None



Likelihood
of flooding

Low areas of
middle risk



Number of
reservoirs
and lakes

0

Summary of incidents attended, activities undertaken, and standards met within Waverley during 2022/23

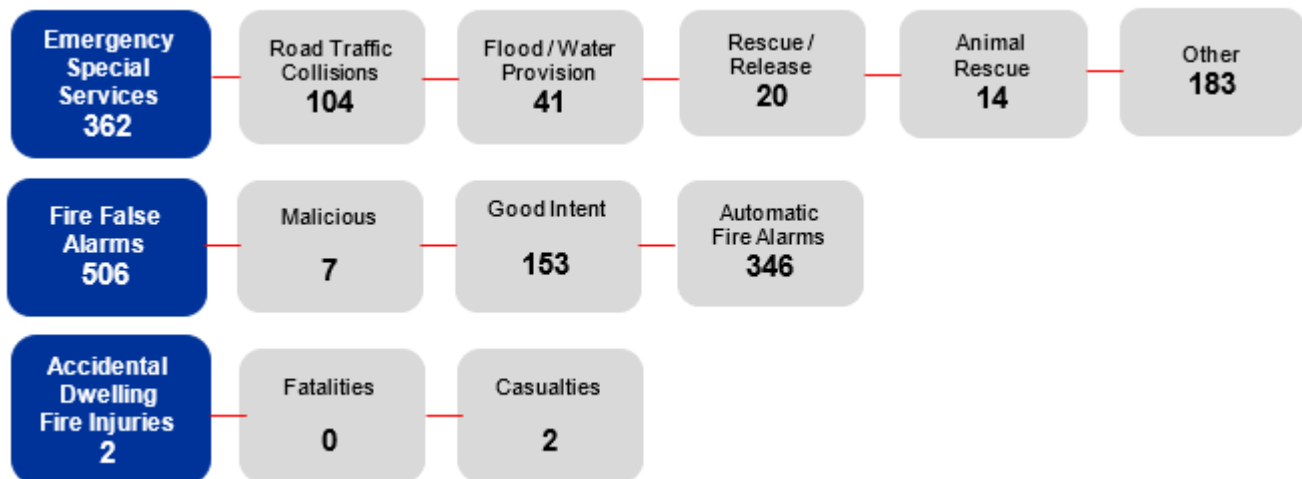
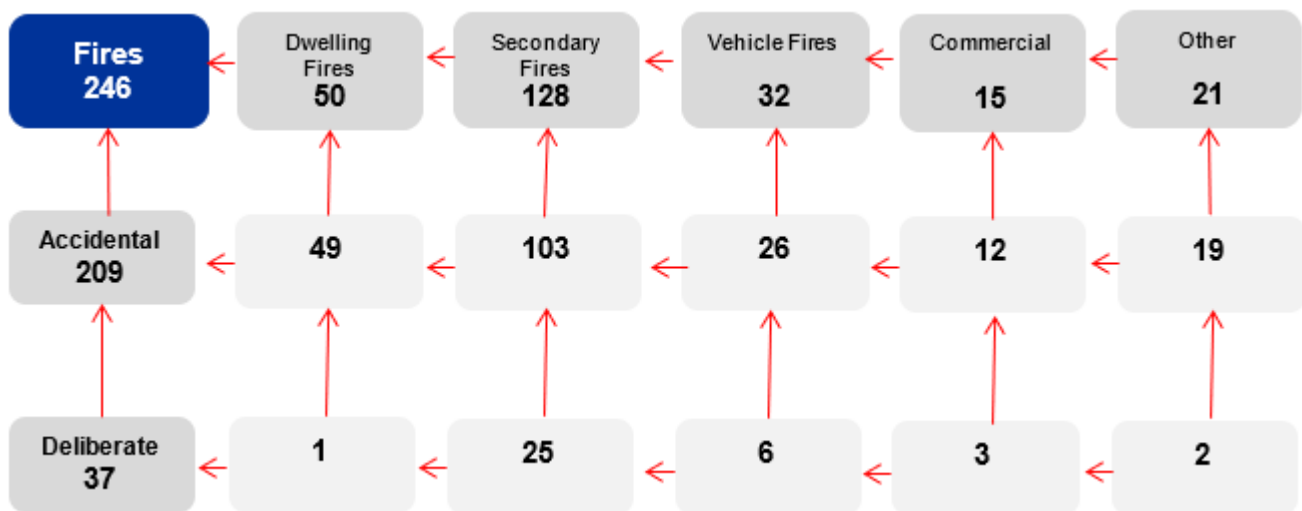
Business and community safety activities undertaken

Performance Area	Result
Safe and Well Visits (SAWVs) completed (Home Safety)	515
Percentage of SAWVs completed to Vulnerable People	92%
Operational Premises Surveys and Tactical Consideration Records (Firefighter Safety)	87
Business Safe and Well Visits completed (Business Safety)	159
Business Safety Audits (Business Safety)	147
Consultations (Building Regulations, Licensing Applications, Post Event Reviews etc.)	222

Standards Achieved

Performance Area	Result
Average turnout time (seconds) - Day	86
Average turnout time (seconds) - Night	146

Incidents attended



Community and Business Safety

In Waverley, we will work with others on community and business safety initiatives to address and drive down risks in our area.

We will work in partnership with Waverly Borough Council to identify the areas where vulnerable residents live, and we will target those areas with Safe and Well Visits (SAWVs). Our SAWVs will identify some individuals with greater needs, and we will support those more vulnerable residents by liaising with other Council departments who can provide the support needed.

As an area that is prone to the risk of wildfire, we will liaise and coordinate with Wildfire Officers over the spring and summer months to ensure that our personnel are familiarised and maintain their competence. We will liaise with landowners and land managers enabling joint working to prevent fire occurrences, and when they do are less severe, and as far as is as reasonably practicable don't impinge on properties. Working with community groups on all commons and surrounding areas to familiarise with risks and challenges posed with potential wildfire incidents at these sites and on military land.

We will attend and support local community events and promote Fire Service engagement. We will also have local groups attend stations and use these engagements to promote Fire Safety within the Community we serve.

At Farnham fire station we will be providing continued access to a national mental health charity to the community room at Farnham fire station to facilitate meetings as we support the valuable work they are undertaking.

We will work with our Community Officers in making the most of every contact we have and promoting Fire Safety messages and campaigns of the National Fire Chiefs Council.

We will prioritise the accumulation of operational information and data to ensure we have the best intelligence and most up-to-date information relating to business premises within the borough. In the event of a fire, this information will enable us to carry out the best tactical plan to minimise damage to the premises and to ensure the safety of the fire crews involved.

We will work with local Community Safety Partnerships (CSP), Safety Advisory Groups (SAG) and Joint Action Groups (JAG) to ensure that we support their work and work together to achieve joint priorities and goals. This joint working will allow us to share information and work more effectively together.

Waverley Action Plan

We have set out our planned actions against the Service priorities to give a clear indication of what we will be focusing on in the local area and what we aim to achieve as a result.

Service Priority:	<i>1. Preventing and protecting people from fire and other risks</i>	
Aim	Lead	
<i>Through local risk management and with wider support from internal and external partners highlight those most at risk and develop actions to support the most vulnerable.</i>	Waverley Borough Commander	
Narrative	Initiative	
<p>To work with Working with Partnership and Partnership Officers alongside Waverley Borough Council to identify areas where vulnerable residents are situated and to target these areas to provide them with Safe and Well Visits. Identifying all those individuals with greater needs such as safeguarding and supporting our most vulnerable residents by liaising with all departments to ensure they get the support they need.</p>	<p>Coffee Morning SAWV campaign – we will reach out to sheltered accommodation and assisted living accommodation types, liaising with on-site staff (if applicable) to arrange a group session covering all elements of a SAWV. Visits to individual premises will then be carried out. We will ask administrators/managers of these premises to contact us when a new tenant arrives, so that we can offer a SAWV.</p> <p>Partnership Working – Already established partnerships with other agencies will be utilised to gain access to vulnerable residents in communities across Waverley. Where these relationships are not already established, the framework of these arrangements in Farnham and Haslemere will be used as a starting point.</p>	
<p>We will continue to respond to enquiries received for SAWV including referrals received from partners, arranging a visit as soon as possible.</p> <p>We will continue to look for every opportunity to ensure the community is aware of the SAWV service and how to access it.</p>	<p>Targeted leaflet drops – Following the identification of areas of low SAWV take-up combined with vulnerable adult data, community events will be organised to encourage SAWV take-up in these areas.</p> <p>Community Events SAWV publicity – Crews will promote SAWVs at all the community events they attend, with crews targeting the most vulnerable in our community.</p>	

Service Priority:	2. Provide more accessible services to better support businesses and communities	
Aim	Lead	
<i>Through local risk management and with wider support from internal and external partners highlight businesses within the area to provide support and advice.</i>	Waverley Borough Commander	
Narrative	Initiative	
<i>We have a range of different businesses, and it will be important for us to prioritise the visits against the identified Risk Register. We will also use the knowledge to target the higher risk properties and work downwards. We will also target areas where we do not have any data</i>	<p>BSAWV targeting – We will use Experian data in combination with data from previous visits to identify the business types statistically most at risk of fire events. All crews will prioritise this.</p> <p>Christmas BSAWVs – Owing to an increased likelihood of businesses (especially retail), having large amounts of stock, perhaps impinging on means of escape, we will complete Business Safe and Well Visits (even if already done recently).</p>	

Service Priority:	3. Improve community outcomes and evaluate services.	
Aim	Lead	
<i>Through local risk management and with wider support from internal and external partners work to improve community outcomes with partners to drive down risk within local area.</i>	Waverley Borough Commander	
Narrative	Initiative	

<i>By being an active member of Community Safety Partnerships, Safety Advisory Groups and Joint Action Groups allows us to understand local risk and work collaboratively to understand risks and to mitigate them</i>	The Waverley Borough Commander (or a deputy if unavailable) will attend all CSP, SAG and JAG meetings taking an active and engaged part and will attend community events in conjunction with other agencies and departments.
--	--

Service Priority:	4. Promote Equality, Diversity and Inclusion.	
Aim	Lead	
<i>Through local risk management and with wider support from internal and external partners work to promote equality, diversity and inclusion with the local area.</i>	Waverley Borough Commander	
Narrative	Initiative	
<i>To work with Partners, SCC and our own Diversity Officer to promote Equality and Diversity within the Community and liking this in with the guidance to be provided by the National Fire Chief Council</i>	To work with the local Community leaders to encompass and promote equality and diversity in all the work we do. To encourage underrepresented groups to apply and join the fire service to better represent the communities we serve.	

Service Priority:	5. Responding to emergencies when they occur.	
Aim	Lead	
<i>Should the worst happen, drive wider safety campaigns through joined up working with internal and external partners.</i>	Waverley Borough Commander	
Narrative	Initiative	
To work with our partners in CSP, SAG, JAG to promote safety in the community. We will also run campaigns in line with those promoted and in line with the NFCC national campaigns to make our community safer.	In line with NFCC Campaigns (as listed below) Waverley crews will take an active part in publicising key messages relating to them and promoting linked key events and activities relating to them. <ul style="list-style-type: none"> • Stay Fire Safe – Cost of Living 	

Work with partner organisations to ensure that SFRS initiatives are available to all by sharing appropriate information and collaborating to solve local area issues raised through the JAG and SOC group meetings.

- Wildfire Aware
- Home Fire Safety Week (12-18 June)
- Business Safety Week (11-17 September)

Appendix 1: Targets for 2023/24

Area to measure performance against	Borough Goal for the year
Operational Premises Surveys and Tactical Consideration Records	101
Safe and Well Visits (SAWV) completed (not campaigns)	556*
% SAWV completed to vulnerable people	At least 70%
Business Safe and Well Visits completed	120
Business Safety Audits	Contributing to Surrey-wide target of 2,052
Consultations (Building Regulations, Licensing Applications, Post Event Reviews etc)	Respond to building regulation applications = at least 90% within 15 working days Respond to licensing applications = at least 95% within 15 working days

* plus a share of a countywide target of 2,000 delivered by a central Partnerships Team

Latest results against targets and incidents

These are available on Tableau, a third-party website:

- [Link](#) to results against community protection activities (available mid-May onwards)
- [Link](#) to numbers of incidents attended (select specific borough/districts via the drop down menu on the left of the page).

Appendix 2: Working with Partners

To achieve our objectives, we will work with the following partners:

- Waverley Borough Council
- University for the Creative Arts
- Surrey Police
- Farnham College
- Godalming College
- Community Safety Partnership
- Joint Action Group
- Safety Advisory Group

Appendix 3: Borough Management Team

A number of roles in SFRS work together to ensure we understand the risks and issues to residents and businesses in the borough and districts of Surrey. If you would like to speak to a member of the Borough Management Team, please use the contact details on the next page.



Comments and Feedback

Your views matter

Your views are very important to us, we want to know what you think about us, our services and the way we deliver them.

We work hard to deliver quality services and we welcome feedback which enables us to improve our performance.

Feedback

You can contact us as follows:

- **Email:** sfcontactqueries@surreycc.gov.uk.
- **Telephone:** 03456 009 009 (8.45am – 4.30pm weekdays, excluding bank holidays).
- **Write to us:** Surrey Fire and Rescue Service Headquarters, Woodhatch Place
11 Cockshot Hill Reigate Surrey RH2 8EF
- **Textphone (via Text Relay):** 18001 03456 009 009.
- **Telephone from overseas:** +44 20 8541 9944 (9am-5pm weekdays, excluding bank holidays).
- **SMS:** 07860 053 465 for deaf and hearing-impaired residents only (Monday to Friday: 9am to 5pm).
- **Emergency SMS:** The [emergency SMS service](#) lets deaf, hard of hearing and speech-impaired people in the UK send an SMS text message to the UK 999 service.
- **VRS:** [Sign Language Video Relay Service](#).

Surrey County Council has a process in place designed to help residents to make a comment on our Service or register a compliment or complaint. We collect information on complaints and compliments so that we can identify any themes or trends in what people are telling us.

Please contact us if you require this document in a different format or language.