

KEY	
	Existing waiting, loading, and parking restrictions (may include symbols)
	Revocation of existing restrictions
	Proposed No Waiting At Any Time

North Point

Scale: 1:1000

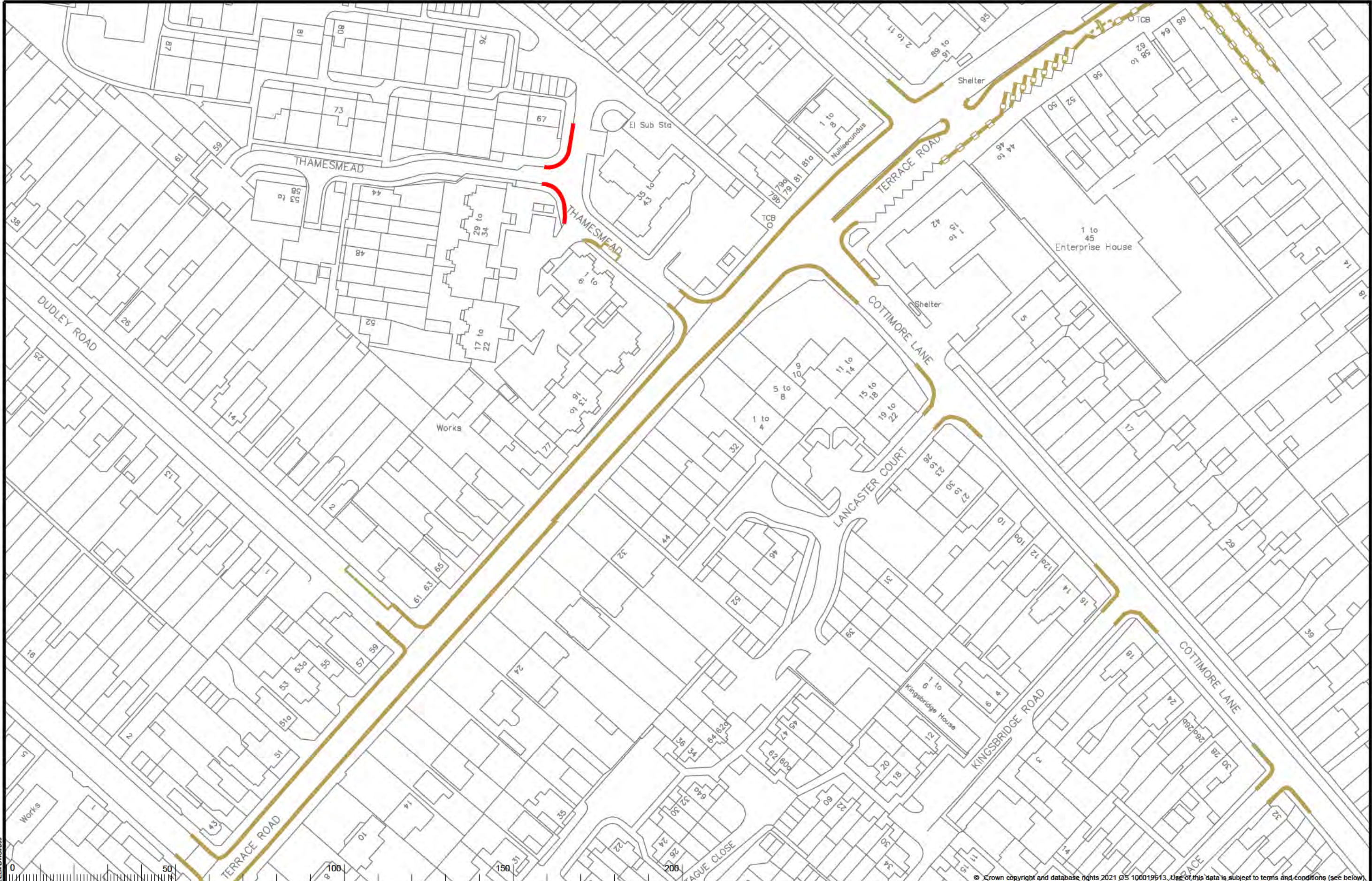
Project Name	Elmbridge Parking Review 2024
Project Milestone	Proposed Traffic Order Amendments
Division	Walton
Locality	Mayo Road And Church Street

SURREY
COUNTY COUNCIL

OS terms & conditions: You are permitted to use this data solely to enable you to respond to, or interact with, the organisation that provided you with the data. You are not permitted to copy, re-brand, distribute or sell any of the data to third parties in any form.

Project No.	3282/ELM
Drawing No.	I10
Current Rev.	-
Phase	Advertisement

File Name: S:\Project-current\3282\ELM\DMVG110



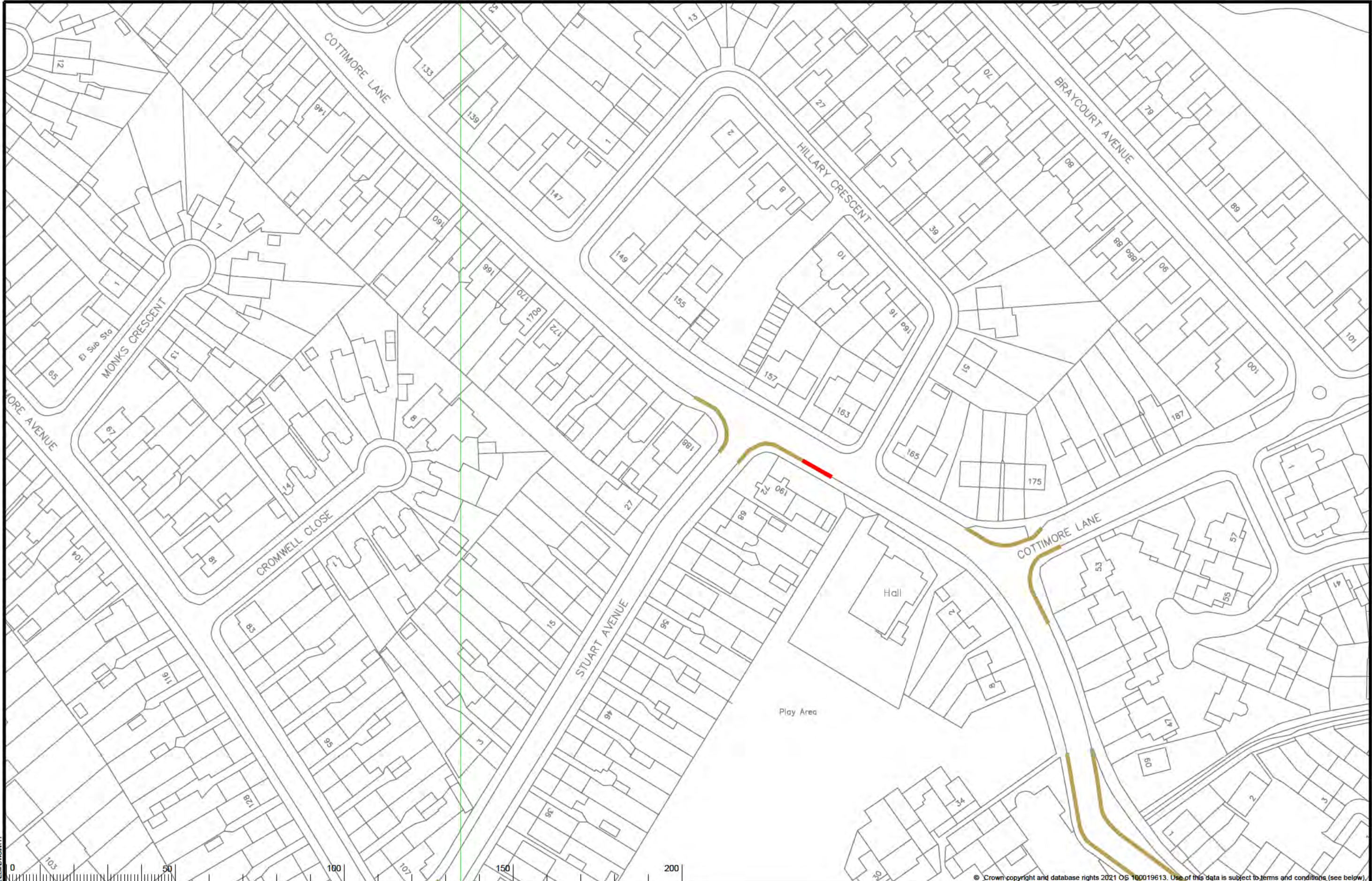
KEY	
	Existing waiting, loading, and parking restrictions (may include symbols)
	Proposed No Waiting At Any Time

--	--

North Arrow	Project Name
	Elbridge Parking Review 2024
Scale: 1:1000	Project Milestone
	Proposed Traffic Order Amendments
	Division
	Walton
	Locality
	Thamesmead

	Project No.
	3282/ELM
	Drawing No.
	J09
OS terms & conditions: You are permitted to use this data solely to enable you to respond to, or interact with, the organisation that provided you with the data. You are not permitted to copy, re-use, distribute or sell any of this data to third parties in any form.	Current Rev.
	-
Phase	
Advertisement	

File Name: S:\Project-current\3282\ELM\DWG\J09



KEY	
	Existing waiting, loading or parking restrictions, may include symbols
	Proposed No Waiting At Any Time

North Point

Scale:
1:1000

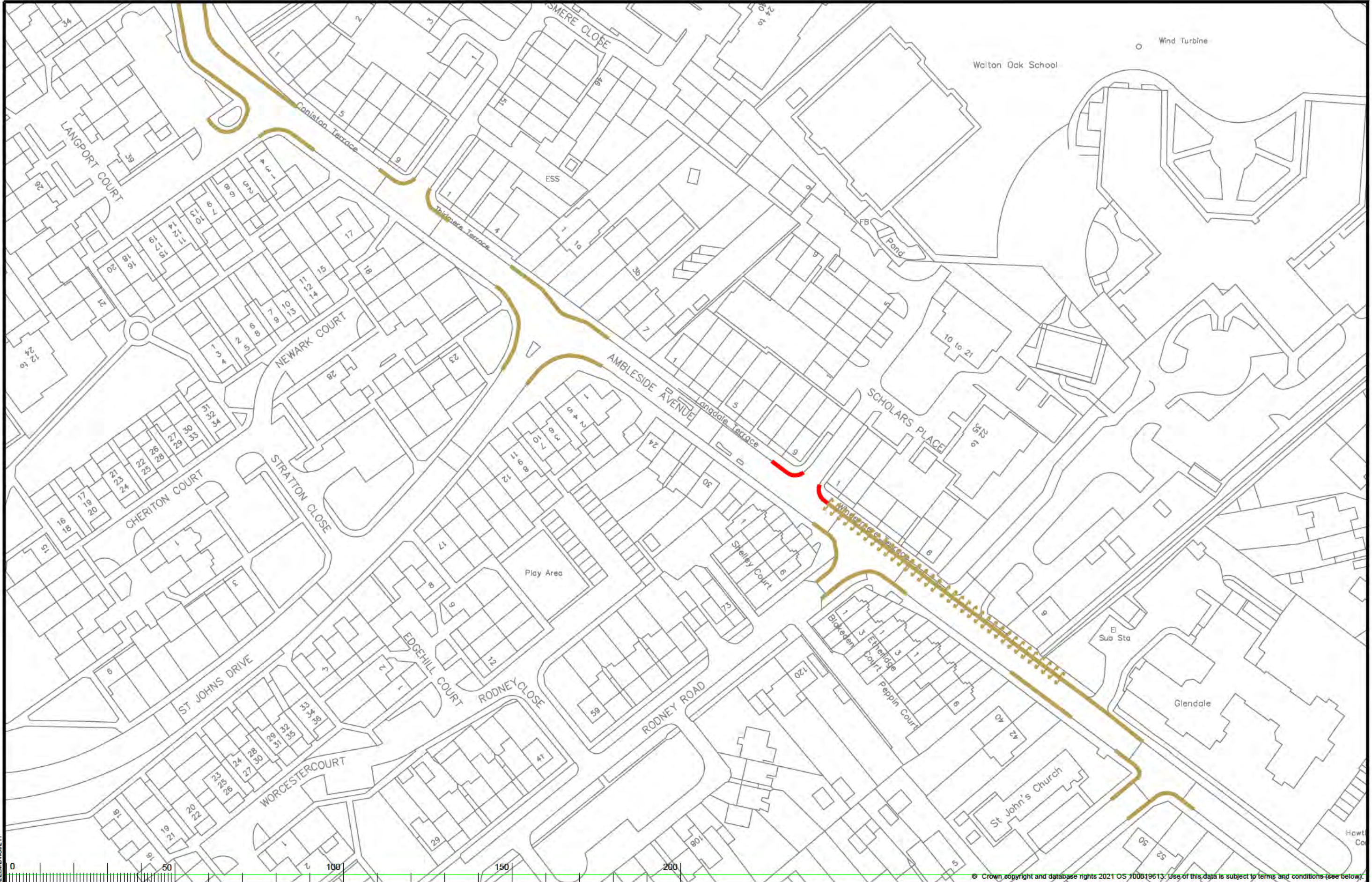
Project Name	Elmbridge Parking Review 2024
Project Milestone	Proposed Traffic Order Amendments
Division	Walton
Locality	Cottimore Lane

SURREY
COUNTY COUNCIL

OS terms & conditions: You are permitted to use this data solely to enable you to respond to, or interact with, the organisation that provided you with this data. You are not permitted to copy, re-use, re-brand, distribute or sell any of this data to third parties in any form.

Project No.	3282/ELM
Drawing No.	K11
Current Rev.	-
Phase	Advertisement

File Name: S:\Project-current\3282\ELM\DWG\K11

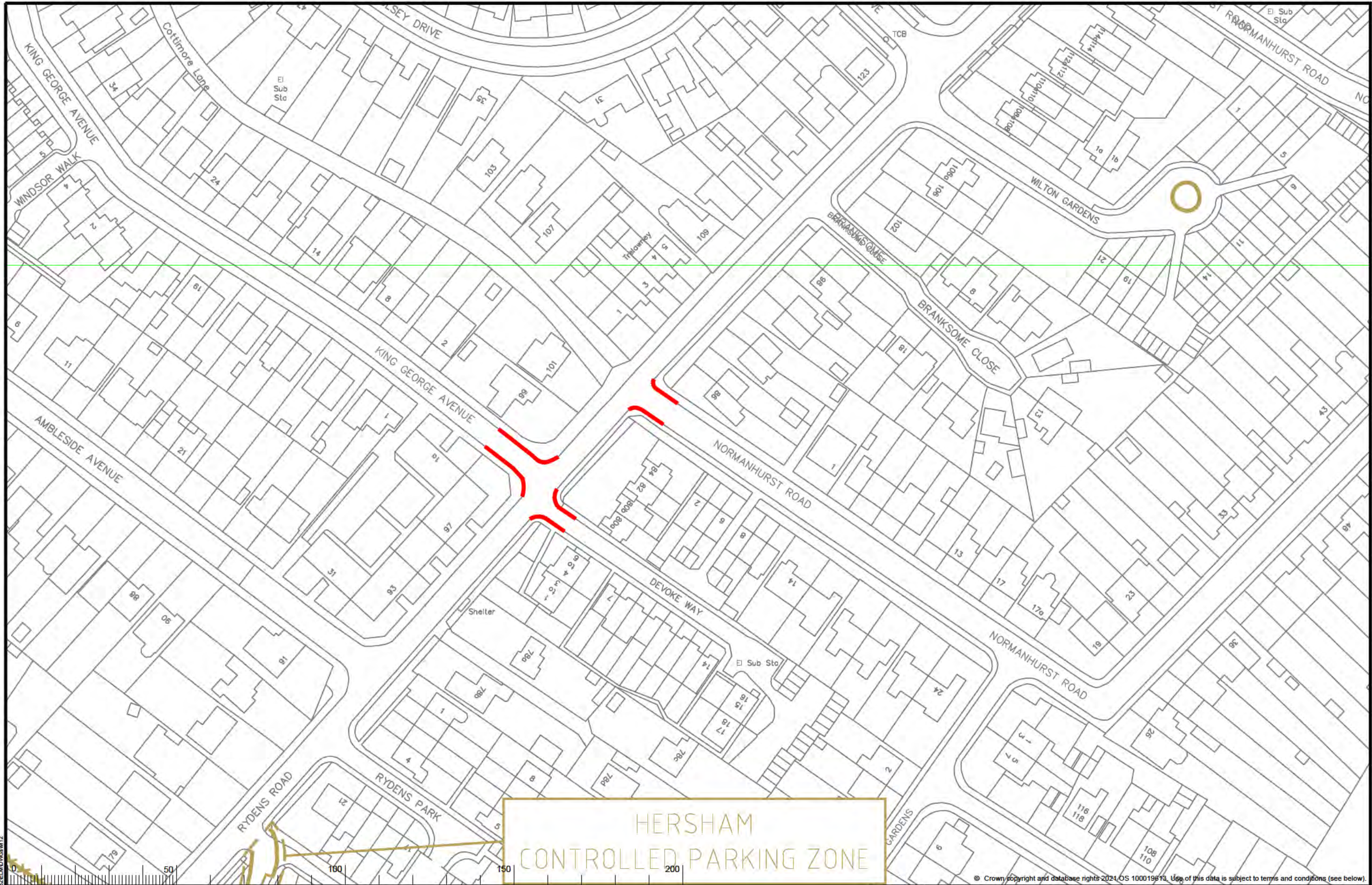


KEY	
	Existing waiting, loading or parking restrictions, may include symbols
	Proposed No Waiting At Any Time

North Point	Project Name
	Elmbridge Parking Review 2024
Scale: 1:1000	Project Milestone
	Proposed Traffic Order Amendments
	Division
	Walton
	Locality
	Ambleside Avenue

	Project No.
	3282/ELM
	Drawing No.
	L11
	Current Rev.
	-
	Phase
	Advertisement

File Name: S:\Project-current\3282\ELM\DWG\L11



KEY Existing waiting, loading, and parking restrictions (may include symbols) Proposed No Waiting At Any Time	HERSHAM CONTROLLED PARKING ZONE	North Arrow N	Project Name Elmbridge Parking Review 2024	 SURREY COUNTY COUNCIL	Project No. 3282/ELM
			Project Milestone Proposed Traffic Order Amendments		Drawing No. M12
Scale: 1:1000			Division Walton / Walton South And Oatlands	<small>OS terms & conditions: You are permitted to use this data solely to enable you to respond to, or interact with, the organisation that provided you with the data. You are not permitted to copy, re-use, distribute or sell any of the data to third parties in any form.</small>	
Locality King George Avenue, Normanhurst Road, Devoke Way			Phase Advertisement		

