

Surrey Local Valuing People Group Presentations Summary



At the meetings we talked about:



- LeDeR with Lynne Ramnanansingh



- Surrey People's Group
Amanda Aldridge and
Carinder Malhi



- SES Water Janet Riley (Mid and East Valuing People Groups)



- SASH Charlotte Rowbotham and Penny Firshman (East Valuing People Group)

LeDeR with Lynne Ramnanansingh :

Lynne spoke about the LeDeR report, which is a report on the deaths of people with a Learning Disability. She looks at the causes of deaths and does work with health to help prevent this.

Key Findings

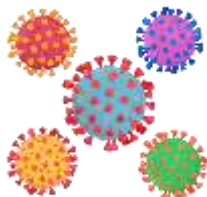
Some key findings include:



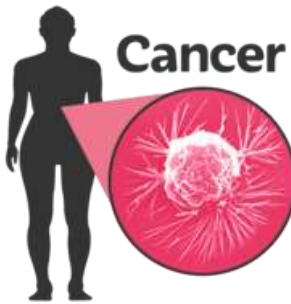
- Median age of death for people with Learning Disabilities is 67 years old



- 65% of deaths were male, this is a 14% increase from last year.



- 1 Covid death



- 16% Aspiration pneumonia
- Cardiac (heart) issues were second most common 16%
- 75% of people that died has their annual health check.
- People going for a cancer screening remains low
- Inequality in flagging children/young people when they access hospital services.
- Common good practice theme was the usage of reasonable adjustments.

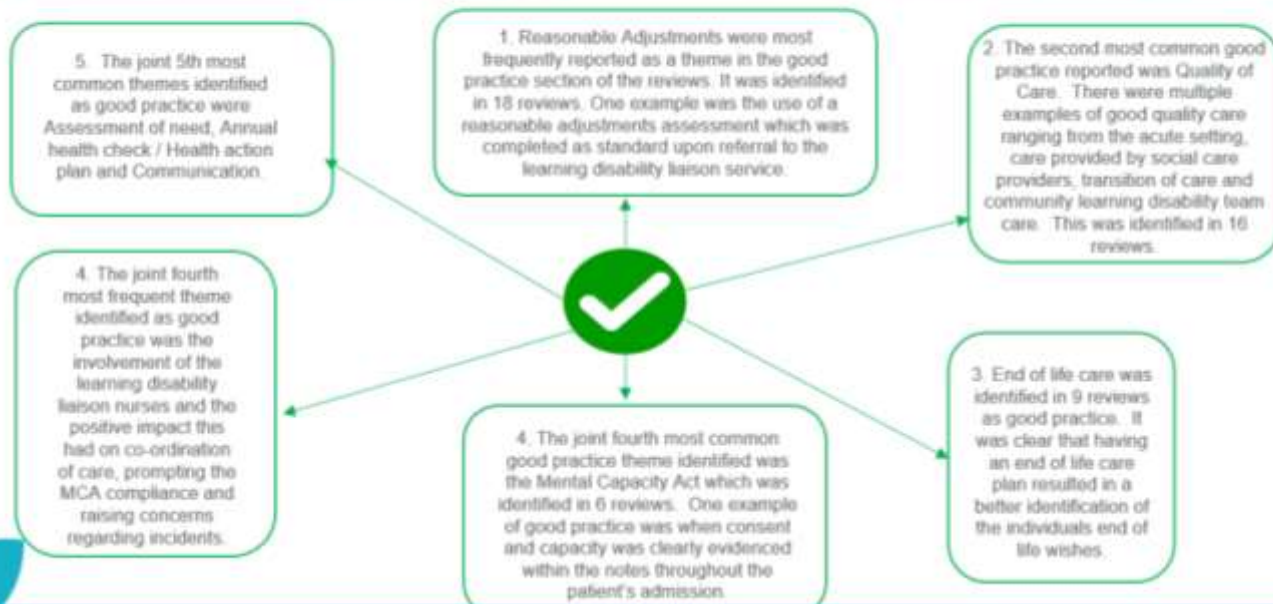
Action from Learning

What has been done to address the learning/themes from local and national LeDeR reports.



- Medication Audit
- Identifying deteriorating health.
- Choking.
- Review of liaison service 2023/2024.
- Screening
- Respect audit
- Bespoke Training

Action from Learning: What best practise and positive outcomes have been learned from the reviews



Areas for improvement showed in the recommendations from reviews – work is underway.

- End of life care looking at the barriers to this for people with learning disabilities
- Identifying deterioration training and monitoring in care homes.





- Communication of need/ hospital passport – promote this

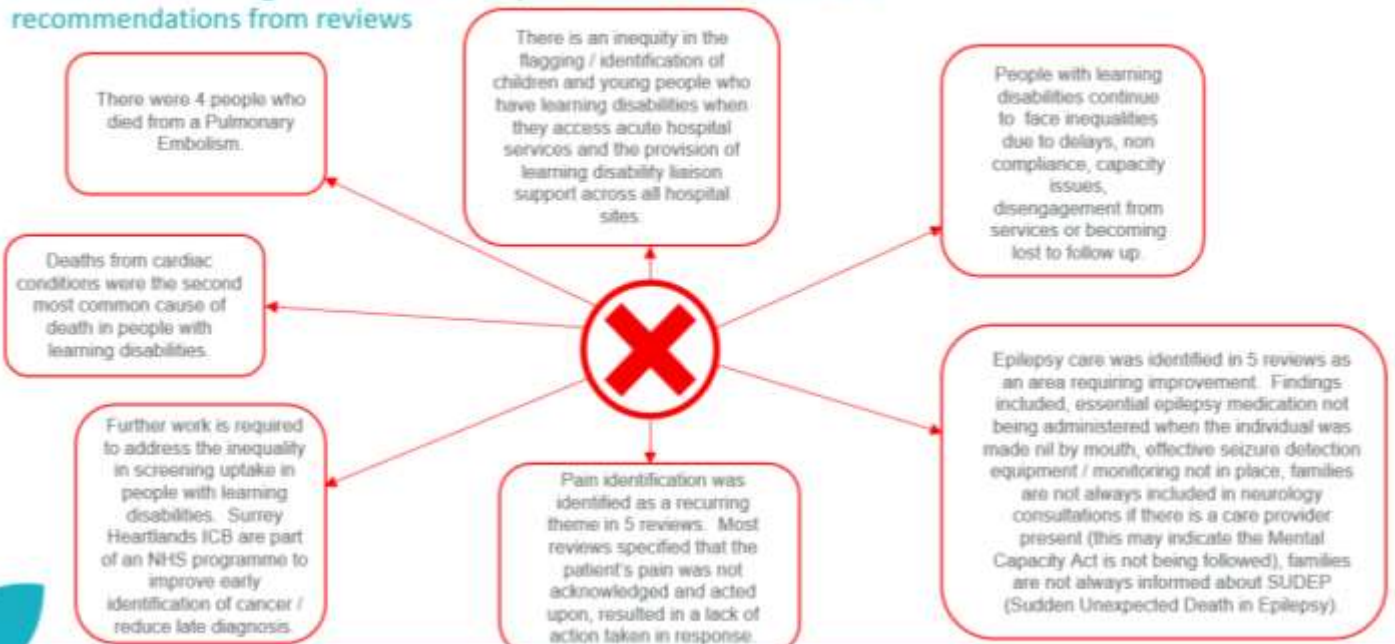


- Annual health check/health action plans. Making sure people are receiving them.

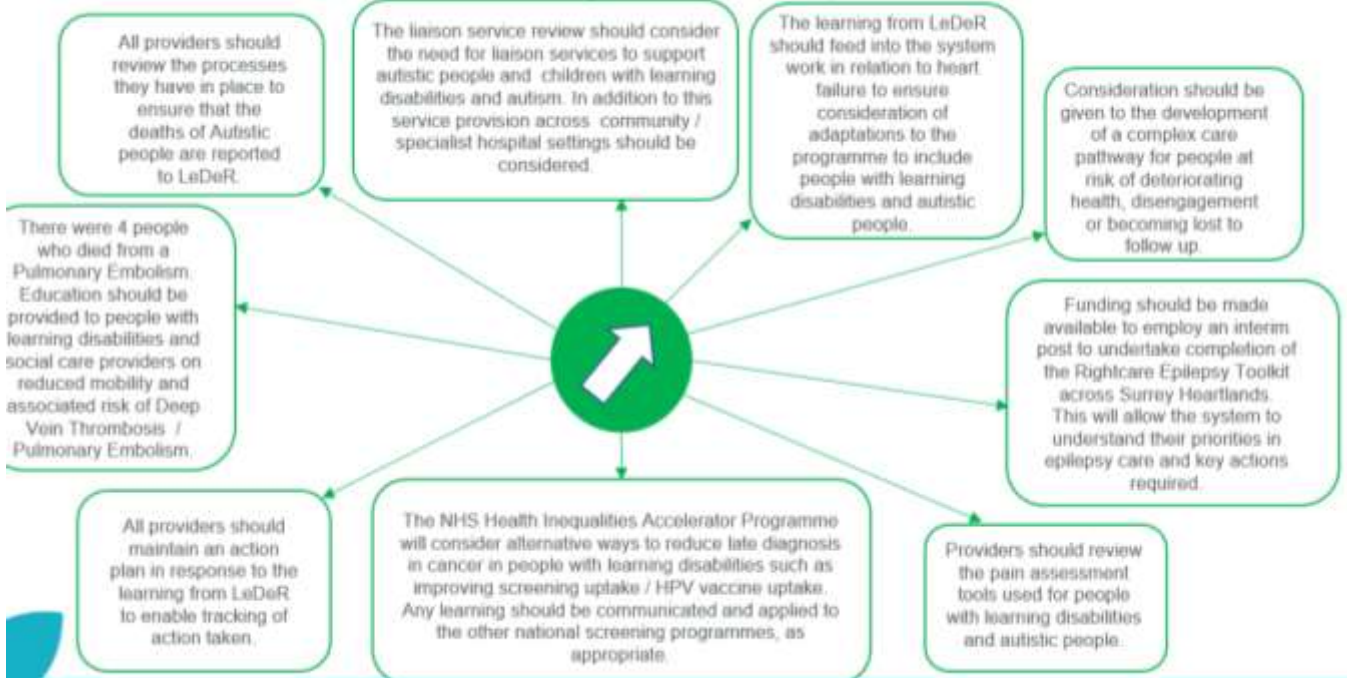


- Mental Capacity Act – monitoring this in practice.

Action from Learning: What areas for improvement were identified in recommendations from reviews



based on the learning from reviews locally and nationally



Please email syheartlandsicb@leder.nhs.net to talk about their work.

Surrey's People's Group

Amanda and Carinder, spoke to the groups about the Surrey People's Group Event that happened during Learning Disability Week



During Learning Disability Week 19th-23rd June, we hosted a lot of events online.



The online events included: health webinars, a tour of the Learning Disability and Autism Hub, Safeguarding Q&A session and training for Surrey County Council staff.



Surrey Adult Learning also had taster session on for people to try, including, pottery, arts and crafts, drama, dance and more!

Surrey's People's Group Event



On the last day of Learning Disability Week, the Surrey People's Group had an event at Woodhatch place in Reigate, with stalls and speakers.



We had many speakers at the event including:

The Police – hate crime and Pegasus card



Liaison Nurses about annual health checks

Social Workers about annual reviews



POhWER Advocacy about advocacy services



Sunny bank came along to talk about their radio Sunny Radio



People from transport came to talk about community transport and bus passes.



Surrey Outdoor learning also came to run outside activities:

- Archery
- Orienteering
- Team tasks

Feedback from the event talks.



Police Feedback – Not many people had or knew about Pegasus cards but knew what to do if they needed help from the police.



Liaison Nurses feedback – many people had their annual reviews but had some issues getting appointments.



Social Workers feedback – many people had issues with their social workers and did not have their annual review.



POhWER advocacy – people had heard of advocacy before.



Sunny Sessions radio did some interviews and have a show every Thursday at 11am



Community Transport and Bus Passes
– There is a new on demand bus service in Mole Valley called Connect. Many people had issues with their bus passes.



Some of the speakers were able to help people with their issues on the day. They have taken away feedback and are working towards making Surrey a better place for people with Learning Disabilities

Useful contacts and links.



Surrey Police – [click here to apply for a Pegasus card](#)

Liaison Nurses:

[Click here for a video about annual health checks](#)

[Click here for information about annual health checks on the LDA hub](#)





[Click here to go to the Primary Care Liaison Team website.](#)

[Community Transport - Click here to go to the Mole Valley Connect bus on demand website.](#)



[Click here to go to the Surrey County Council buss pass website](#)



[Click here to go to Surrey Hills Radio website](#)



[Click here to listen to old shows on Sunnybank radio .](#)



[Click here for POhWER's website](#)



There email is pohwer@pohwer.net or call 0300 456 2370

[Click here for Matrix advocacy's website.](#)



Matrix offer Advocacy for those who do not have capacity.



Social Worker team contact details

East.learningdisabilityduty@surreycc.gov.uk

East Team covers: Tandridge, Mole Valley, Reigate and Banstead, Epsom and Ewell and Elmbridge

West.learningdisabilityduty@surreycc.gov.uk

West team covers: Spelthorne, Surrey Heath, Woking, Runnymede, Guildford and Waverley

Or call: 01483 404 770

SES Water – June Riley

SES Water came to talk about:



Where your water comes from

The Environment, helping wildlife and preventing plastic pollution



How they can help you including, support schemes, affording your bills, priority services register, your bills.



You can sign up or register on: [SES Water MyAccount](#)

[Water discounts.](#)



Find out more about [what SES water do here:](#)



There is also information or our [Learning Disability and Autism Hub.](#)

SASH.

Surrey and Sussex Healthcare (SASH came to talk about their people's panel.



The people's panel is a group of people who want to make hospitals better. For anyone living in East Surrey or West Sussex



You do not have to commit, and be as or as little involved as you like

They will meet every 3 months to talk about what needs improving, updates from hospitals and involvement opportunities.



They have:

- Done surveys and research
- Improving training for professionals
- Working with SASH+ teams
- And working with steering groups



They can also:



Have more opportunities for surveys

Review hospital documents and strategies



Input on hospital communication through the patient information group.



Work on trust accessibility and inclusion



Change projects by using your ideas.