

Notes

| Rev. | Description | Drwn | Sig. | Date | Chkd | Sig. | Date | Appr | Sig. | Date |
|------|-------------|------|------|------|------|------|------|------|------|------|
| | | | | | | | | | | |
| | | | | | | | | | | |
| | | | | | | | | | | |
| | | | | | | | | | | |
| | | | | | | | | | | |

North Point

Based upon the Ordnance Survey mapping with the permission of the Controller of Her Majesty's Stationery Office. © Crown copyright. Unauthorised reproduction infringes Crown copyright and may lead to prosecution or civil proceedings. Surrey County Council LA 078872 1998.

| | | |
|-------------|------|------|
| Drawn by | Sig. | Date |
| Checked by | Sig. | Date |
| Approved by | Sig. | Date |

Project

Reigate and Banstead Parking Review 2024 to 25

Drawing

Arbutus Road, Redhill

SURREY
COUNTY COUNCIL
Sustainable Development
Surrey Highways

| | |
|----------------|----------|
| Project No. | Contract |
| Sheet | No. |
| Drawing No. | 98 |
| Rev. | |
| Classification | ADVERT |

SHEET 01



KEY

PROPOSED
DOUBLE YELLOW LINES

EXISTING WAITING, LOADING
AND PARKING RESTRICTIONS
(WITH OR WITHOUT SYMBOLS)

Notes

| Rev. | Description | Drwn | Sig. | Date | Chkd | Sig. | Date | Appr | Sig. | Date |
|------|-------------|------|------|------|------|------|------|------|------|------|
| | | | | | | | | | | |
| | | | | | | | | | | |
| | | | | | | | | | | |
| | | | | | | | | | | |

North Point

Based upon the Ordnance Survey mapping with the permission of the Controller of Her Majesty's Stationery Office. © Crown copyright. Unauthorised reproduction infringes Crown copyright and may lead to prosecution or civil proceedings. Surrey County Council LA 076872 1998.

Drawn by

Sig.

Date

Checked by

Sig.

Date

Approved by

Sig.

Date

Project

Reigate and Banstead Parking Review 2024 to 25

Drawing

Copsleigh Avenue, Redhill


SURREY
COUNTY COUNCIL
Sustainable Development
Surrey Highways

Project No.

Contract

Sheet No.

Drawing No.

Rev.

Classification

ADVERT

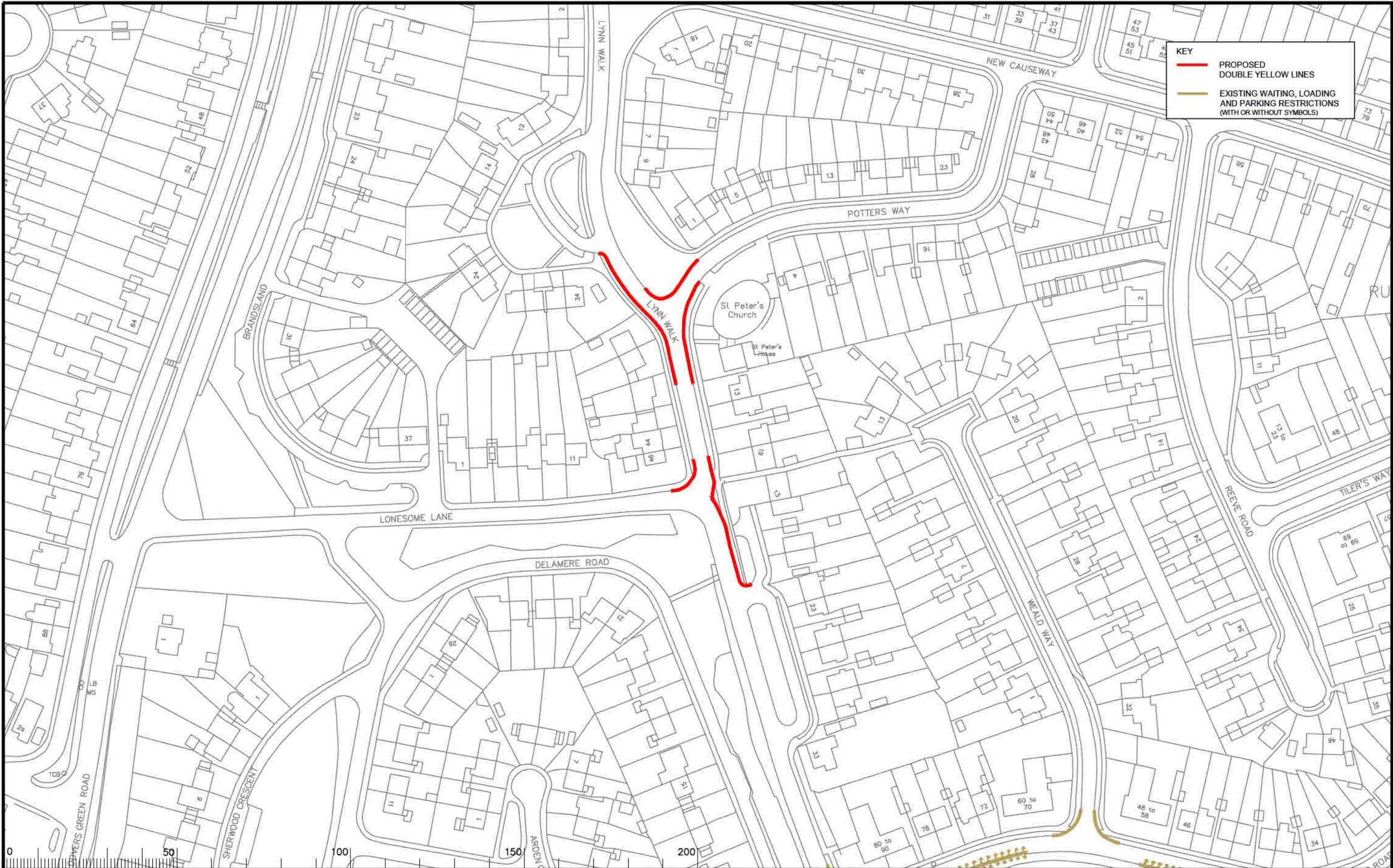
File Name

\\00C2-FLS-08.surreycc.local\VOL4\MLA8F3\red\CORE\Traffic and Legal\Parking Team\REIGATE & BANSTEAD\2024 Review\RD19Review 2024.dwg

©A3

SHEET

67



KEY

PROPOSED
DOUBLE YELLOW LINES

EXISTING WAITING, LOADING
AND PARKING RESTRICTIONS
(WITH OR WITHOUT SYMBOLS)

Notes

| Rev. | Description | Drwn | Sig. | Date | Chkd | Sig. | Date | Appr | Sig. | Date |
|------|-------------|------|------|------|------|------|------|------|------|------|
| | | | | | | | | | | |
| | | | | | | | | | | |
| | | | | | | | | | | |
| | | | | | | | | | | |
| | | | | | | | | | | |
| | | | | | | | | | | |
| | | | | | | | | | | |
| | | | | | | | | | | |
| | | | | | | | | | | |
| | | | | | | | | | | |

File Name: \\00C2-FLS-08.surreycc.local\VOL4\MLA8F3\redhill\CORE\Traffic and Legal\Parking Team\REIGATE & BANSTEAD\2024 Review\RD19Review 2024.dwg

©A3

North Point

Based upon the Ordnance Survey mapping with the permission of the Controller of Her Majesty's Stationery Office. © Crown copyright. Unauthorised reproduction infringes Crown copyright and may lead to prosecution or civil proceedings. Surrey County Council LA 076872 1998.

Drawn by: Sig. Date

Checked by: Sig. Date

Approved by: Sig. Date

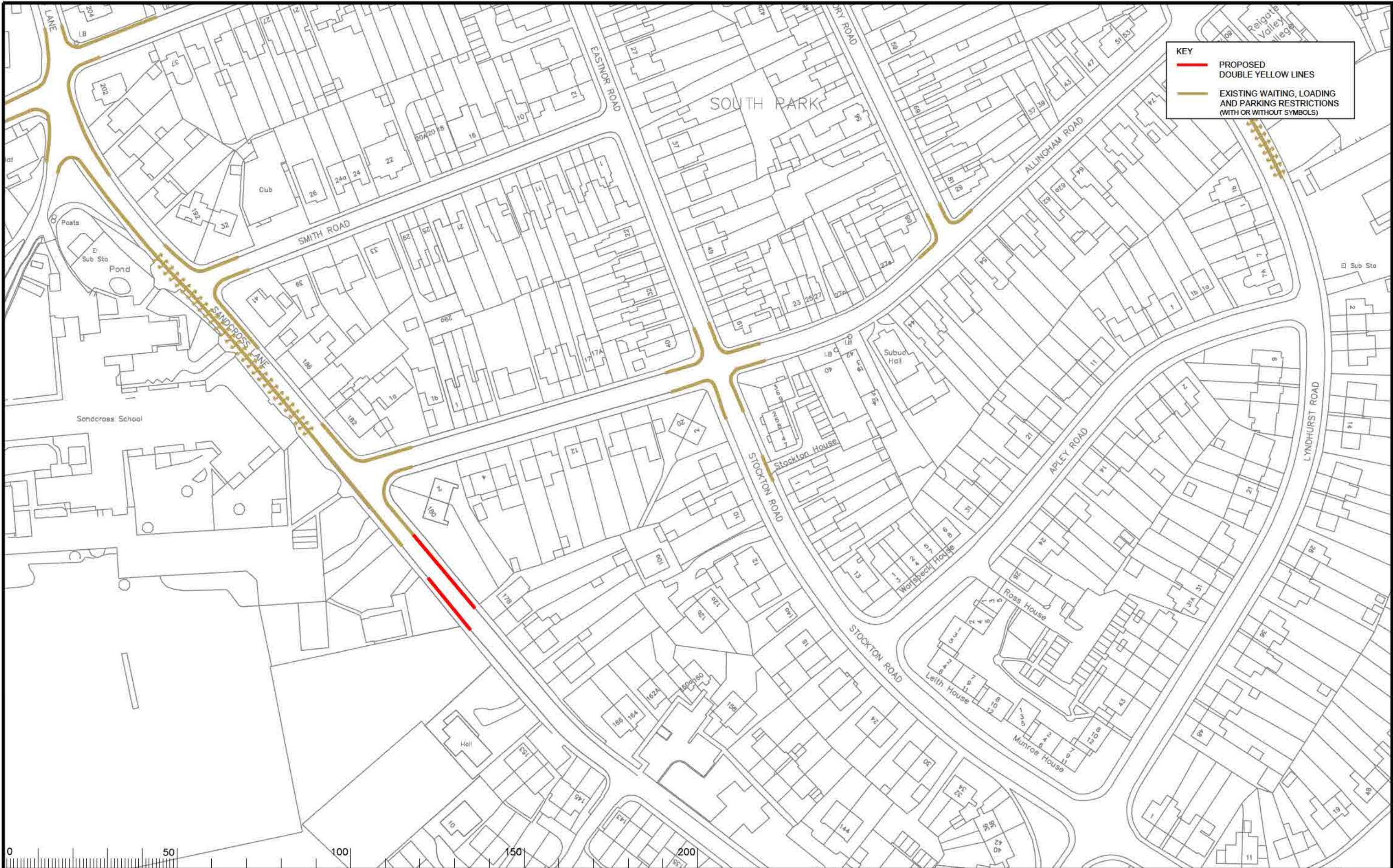
Project: Reigate and Banstead Parking Review 2024 to 25

Drawing: Lynn Walk j/w Potters Way, Redhill
Lynn Walk j/w Lonesome Lane, Redhill

SURREY
COUNTY COUNCIL
Sustainable Development
Surrey Highways

Project No. Contract Sheet No. Drawing No. 99 Rev. Classification ADVERT

SHEET 01



Notes

| Rev. | Description | Drwn | Sig. | Date | Chkd | Sig. | Date | Appr | Sig. | Date |
|------|-------------|------|------|------|------|------|------|------|------|------|
| | | | | | | | | | | |
| | | | | | | | | | | |
| | | | | | | | | | | |
| | | | | | | | | | | |
| | | | | | | | | | | |
| | | | | | | | | | | |
| | | | | | | | | | | |
| | | | | | | | | | | |
| | | | | | | | | | | |



Based upon the Ordnance Survey mapping with the permission of the Controller of Her Majesty's Stationery Office. © Crown copyright. Unauthorised reproduction infringes Crown copyright and may lead to prosecution or civil proceedings. Surrey County Council LA 076872 1998.

| | | |
|-------------|------|------|
| Drawn by | Sig. | Date |
| Checked by | Sig. | Date |
| Approved by | Sig. | Date |

Project
Reigate and Banstead Parking Review 2024 to 25

Drawing
Sandcross Lane, Reigate

SURREY
COUNTY COUNCIL
Sustainable Development
Surrey Highways

| | |
|----------------|--------------|
| Project No. | Contract No. |
| | |
| Drawing No. | Rev. |
| 96 | |
| Classification | |
| ADVERT | |