

Surrey County Council Minerals and Waste  
Planning Policy

# Surrey Waste Local Plan

Duty to Cooperate Evidence of  
Engagement

October 2017



SURREY

If you have any questions about the consultation or you are having difficulty in accessing the documents please contact Surrey County Council:



**Phone: 03456 009 009**



**Email: [wasteplan@surreycc.gov.uk](mailto:wasteplan@surreycc.gov.uk)**



**Letter: Planning and Development Service,  
Room 385 County Hall, Penrhyn Road,  
Kingston upon Thames, KT1 2DW**

## Table of Contents

Table of Contents.....	3
Executive Summary .....	4
1. Introduction.....	5
1.1 What is the Duty to Cooperate? .....	5
1.2 Context for preparing the Surrey Waste Local Plan.....	5
1.3 Purpose of this Statement.....	5
2. Legislation and Guidance .....	6
2.1 Legislative Framework .....	6
2.2 National Policy and Guidance .....	7
3. Surrey Context.....	7
4. Meeting the Duty to Cooperate .....	8
4.1 Overview.....	8
4.2 Identifying actions for effective cooperation .....	9
4.3 Identifying outcomes .....	10
4.4 Process for review .....	11
5. Meeting the Duty to Cooperate .....	11
5.1 Key issues identified under the DtC .....	11
5.2 Identifying DtC bodies.....	14
6. Actions and outcomes under the Duty to Cooperate .....	17
6.1 Green Belt .....	17
6.2 Identifying new strategic waste management facilities .....	19
6.3 Sustainable construction.....	27
6.4 Waste Data/Methodologies .....	28
6.5 Landfill .....	29
6.6 Waste from London.....	31
7. Other Engagement .....	32
7.1 Involving Elected Members .....	32
7.2 Engagement outside the DtC .....	32
8. Next Steps.....	33
8.1 Draft Plan Consultation .....	33
8.2 Ongoing engagement .....	33
Appendix 1 – Relevant Authorities .....	34

## Executive Summary

In developing a new Surrey Waste Local Plan (new SWLP), Surrey County Council, as the Waste Planning Authority (WPA), has a statutory duty to “engage constructively, actively and on an ongoing basis” with other relevant organisations on cross boundary strategic matters in order to maximise the effectiveness of plan preparation.

All Local Planning Authorities must demonstrate how they have complied with the Duty to Cooperate (DtC) at the independent examination of their Local Plans. If they cannot demonstrate this then the Local Plan will not be able to proceed further in examination and, ultimately, cannot be adopted.

This statement sets out who the council will engage with during the development of the new SWLP and how and when it will to do this. These organisations include: Surrey District and Borough Councils, other Waste Planning Authorities, Greater London and other relevant organisations.

# 1. Introduction

## 1.1 What is the Duty to Cooperate?

- 1.1.1 Section 33A of the Planning and Compulsory Purchase Act 2004 (as amended) places a duty on Local Planning Authorities, in preparing local plans, to “engage constructively, actively and on an ongoing basis” with other relevant organisations to maximise the effectiveness with which plan preparation is undertaken.
- 1.1.2 Methods of implementing the Duty to Cooperate (DtC) are set out in both the National Planning Policy Framework (NPPF) (2012) and the national Planning Practice Guidance (nPPG). Under the DtC, Local Planning Authorities are expected to work ‘collaboratively with other bodies to ensure that strategic priorities across local authority boundaries are properly coordinated and clearly reflected in local plans’ (paragraph 179 of the NPPF).
- 1.1.3 As part of the examination for the new SWLP, Surrey County Council as the Waste Planning Authority (WPA) will be expected to demonstrate evidence of having effectively cooperated to plan for issues with strategic cross-boundary impacts. If the WPA cannot demonstrate that it has complied with the duty then the Local Plan will not be able to proceed further in examination<sup>1</sup> and will not be able to adopt its Plan.
- 1.1.4 In complying with the DtC, the nPPG recommends that Local Planning Authorities ‘scope’ the strategic matters of the Local Plan and identify those local authorities and prescribed bodies that need to be engaged. Strategic matters are defined as those which include sustainable development or use of land that has or would have a significant impact on at least two planning areas.

## 1.2 Context for preparing the Surrey Waste Local Plan

- 1.2.1 Surrey County Council, as the WPA, has identified a need to review and where necessary, update the current Surrey Waste Plan (SWP) which was adopted in 2008. The new SWLP will cover the period from 2018 – 2033.
- 1.2.2 The review will need to take account of, and as appropriate align with, other policy being developed, including; minerals and waste plans from adjoining authorities, changes to national planning policy and other local (district or borough and neighbourhood) plans.

## 1.3 Purpose of this Statement

- 1.3.1 This statement sets out the strategic matters on which Surrey County Council has identified during the preparation of the draft SWLP, how it has engaged with who, how and when. This Statement will also help Surrey County Council demonstrate that it has discharged its DtC responsibilities at examination.

---

<sup>1</sup> Planning Practice Guidance for Duty to Cooperate. Paragraph: 001 Reference ID: 9-001-20140306.

- 1.3.2 The Statement should be regarded as a 'living document' that will be updated as new issues arise or different bodies need to be involved in discussions. It will also provide an ongoing record of engagement that has been undertaken on strategic matters.

## 2. Legislation and Guidance

### 2.1 Legislative Framework

- 2.1.1 Section 110 of the Localism Act 2011, places a legal duty on Local Planning Authorities to cooperate with one another; county councils and other prescribed bodies to maximise the effectiveness within which certain activities are undertaken insofar as they relate to a 'strategic matter'.
- 2.1.2 Section 33A of the Planning and Compulsory Purchase Act 2004 (as amended) describes strategic matters as follows:
- a) sustainable development or use of land that has or would have a significant impact on at least two planning areas, including (in particular) sustainable development or use of land for or in connection with infrastructure that is strategic and has or would have significant impact on at least two planning areas; and
  - b) sustainable development or use of land in a two-tier area if the development or use (i) is a county matter, (ii) has or would have a significant impact on a county matter.
- 2.1.3 Apart from other WPAs, Local Planning Authorities and County Councils the other bodies prescribed are those identified in Regulation 4 of The Town and Country Planning (Local Planning) (England) Regulations 2012. These are:
- a) The Environment Agency
  - b) the Historic Buildings and Monuments Commission for England (known as Historic England)
  - c) Natural England
  - d) the Mayor of London
  - e) the Civil Aviation Authority
  - f) the Homes and Communities Agency
  - g) each Primary Care Trust<sup>2</sup>
  - h) the Office of Rail Regulation
  - i) Transport for London
  - j) each Integrated Transport Authority
  - k) each Highway Authority and,
  - l) the Marine Management Organisation.

## 2.2 National Policy and Guidance

- 2.2.1 Paragraphs 178-181 of the National Planning Policy Framework (NPPF) provide guidance on how strategic planning matters should be addressed in local plans. ‘Strategic priorities’ to which Local Planning Authorities should have particular regard, including waste management, are set out in paragraph 156 of the NPPF.
- 2.2.2 The National Planning Policy for Waste which was published by the Department for Communities and Local Government in October 2014 also states that “waste planning authorities should... work collaboratively with other waste planning authorities... through the statutory duty to cooperate, to provide a suitable network of facilities to deliver sustainable waste management”.
- 2.2.3 In addition the Inspector’s report for the North London Waste Plan made it clear that, in carrying out the Duty to Co-operate, WPAs should engage with bodies representing the planning areas to which significant<sup>2</sup> quantities of waste are exported. Significant quantities of waste include the following
- 5,000 tonnes per annum of non-inert waste
  - 100 tonnes per annum of hazardous waste
  - 10,000 tonnes per annum of inert wastes including excavation waste
- 2.2.4 Local Enterprise Partnerships (LEPs) and Local Nature Partnerships (LNPs) are not subject to the requirements of the duty themselves, but LPAs must cooperate with LEPs and LNPs and have regard to their activities when they are preparing their Local Plans. This requirement reflects the important role that LEPs and LNPs play in strategic planning.

## 3. Surrey Context

- 3.1.1 Surrey includes 11 District and Borough Councils and the County Council. The total area covered by Surrey is 1,663 km<sup>2</sup> with a population of approximately 1,161,000. Surrey is located within the South East of England region, and borders the counties of Kent, East Sussex, West Sussex, Hampshire and Berkshire. The full list of adjoining Authorities is in Appendix 1.

---

<sup>2</sup> Thresholds for consulting other Waste Planning Authorities under the Duty to Co-operate were agreed at the South East Waste Planning Advisory Group Meeting on 10 April 2014.

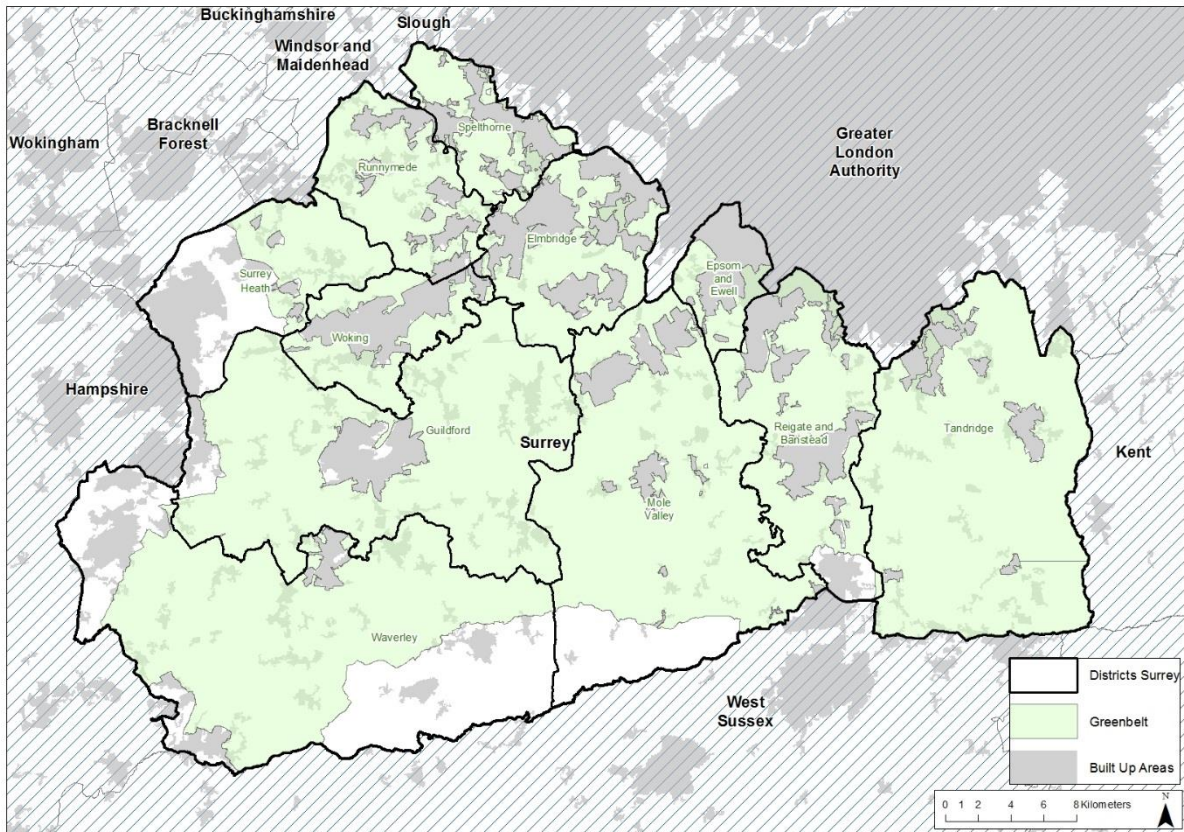


Figure 1 Map of Surrey and the South East showing urban areas and Green Belt Boundaries

3.1.2 Importantly, Surrey also borders the Greater London Area. Greater London influences Surrey in the following ways:

- Economic benefits from a strong strategic location relative to London e.g. strong business base, skilled workforce
- Migratory pressures from London and the need for housing those who work in London
- Waste movements, particularly Construction, Demolition and Excavation (C, D & E) waste are typically high due to the number of large developments in and around London.

## 4. Meeting the Duty to Cooperate

### 4.1 Overview

4.1.1 Local planning authorities and other public bodies need to work together from the outset before options for the planning strategy are identified<sup>3</sup> in order to identify and assess the implications of any strategic cross boundary issues on which they need to work together and maximise the effectiveness of Local Plans.

<sup>3</sup> Planning Practise Guidance for Duty to Cooperate. Paragraph: 012 Reference ID: 9-012-20140306.



- 4.1.2 The county council consulted on Issues and Options, including a DtC Scoping Statement, between September and November 2016. The results of the Issues and Options Consultation were used to identify what issues the county council needs to work on and with whom.
- 4.1.3 Specifically, DtC engagement at this stage included:
- Sending out DtC notifications to those bodies we have identified in this document of our intent to review the SWP 2008
  - Sending out summaries of waste movements from Surrey (by email) to the WPAs we have identified in Appendix 1
  - Undertaking follow up contact (by email, telephone or meeting) to responses that require additional action in preparation of the draft plan.
  - Notification of how comments on the Issues and options have been considered.
- 4.1.4 Surrey County Council also consulted on the Duty to Cooperate Scoping statement to gather views from those bodies it identified on whether or not there were other actions required for the county council to meet its legal duty.
- 4.1.5 Feedback suggested that the initial scope of the document was satisfactory and represented the early stage of plan-making in which the county council was involved. However, suggested that as the plan progressed the focusing of issues was important.
- 4.1.6 DtC Bodies also pointed out that monitoring of the actions undertaken as part of the DtC would ensure that the county council would be able to demonstrate it had met the requirements under the DtC.
- 4.1.7 This DtC Statement sets out the agreed principles in the DtC Scoping Statement, identifies what actions the county council has taken to date with respect to the DtC, the outcomes of this engagement and future monitoring and review.

## 4.2 Identifying actions for effective cooperation

- 4.2.1 The actions will depend on local needs which will differ, so there is no definitive list of actions that constitute effective cooperation under the duty. In addition to formal consultation stages, engagement will occur through a range of other work undertaken in developing the new SWLP. This may include:
- Preparation of joint evidence e.g. cross-boundary waste movements, Strategic Flood Risk Assessment, Habitat Regulation Assessment
  - Meetings on specific issues e.g. site allocations, waste streams
  - Informal consultations or workshops on specific issues e.g. Green Belt
  - Joint agreements such as Memoranda of Understanding (MoU) and Statements of Common Ground (SoCG).

4.2.2 Some of the actions the county council is undertaking to engage with relevant bodies under the DtC are listed in Table 2.

Table 1 Mechanisms of engagement for DtC

Engagement	Type of engagement	Who will it include	Frequency
Consultation on Issues and Options Report (Reg 18)	Consultation	All Stakeholders (inc. DtC bodies)	Once
Consultation on Draft Plan	Consultation	All Stakeholders (inc. DtC bodies)	Once
Consultation on Proposed Submission Plan	Consultation	All Stakeholders (inc. DtC bodies)	Once
Attending Planning Working Group (PWG)	Meeting	Surrey Districts and Boroughs	Monthly
South East Waste Planning Advisory Group (SEWPAG)	Meeting	WPAs in the South East of England	Quarterly
London Waste Planning Forum (LWPF)	Meeting	East of England Waste Technical Advisory Body (TAB), London boroughs, Greater London Authority (GLA), Environment Agency	As required
Waste Planning Authorities attending SEWPAG	Formal Agreements: Memorandum of Understanding Statement of Common Ground on Landfill	WPAs in the South East of England	As required
Confirming waste movements with WPAs	As required	WPAs within and outside of the South East of England	As required
Discussion (meeting, email, phone) on specific issues e.g. strategic site allocations	As required	All consultees	As required

### 4.3 Identifying outcomes

4.3.1 Planning Practice Guidance states that cooperation between local planning authorities, county councils and other public bodies should produce effective policies on strategic cross boundary matters<sup>4</sup>. The outcomes of any actions carried

<sup>4</sup> Planning Practise Guidance for Duty to Cooperate. Paragraph: 010 Reference ID: 9-010-20140306.

out under the DtC should ensure strategic matters are planned for effectively and this includes policies, evidence or general plan-making.

#### 4.4 Process for review

- 4.4.1 The nPPG advises that effective cooperation is likely to require ongoing, sustained joint working with concrete actions and outcomes. It is unlikely to be met by an exchange of correspondence, conversations or consultations between authorities alone<sup>5</sup>.
- 4.4.2 The county council needs to be able to respond to issues as they arise but also identify how these issues could be addressed in the longer term. A timescale for review and the purpose of any ongoing review should be set down based on the nature of specific issues.

## 5. Meeting the Duty to Cooperate

### 5.1 Key issues identified under the DtC

#### Green Belt

- 5.1.1 Of the 14 sites allocated in the current Surrey Waste Plan 2008 13 are located in the Green Belt. Waste management facilities are generally considered inappropriate development in the Green Belt. Hence there is an ongoing need to demonstrate very special circumstances at the planning application stage.
- 5.1.2 This has given rise to difficulties when applications have been received, particularly where a site is allocated, which are required to address Green Belt issues. This avoids the issue and leaves it for development management to address too late in the planning system. It causes angst for local communities and can make cooperation between county and districts and boroughs difficult.
- 5.1.3 Looking at the new Surrey Waste Local Plan, we face a situation where we will almost certainly have to continue to allocate sites in the Green Belt to accommodate our assessed need for waste capacity and to meet the proximity principle. We are considering carrying forward some existing waste plan sites and also consider some new sites.
- 5.1.4 The issue is a shared issue<sup>6</sup> between the county council and the 11 district and borough councils on how can we avoid the current lack of certainty and meet the challenge of meeting our need for waste capacity in a situation which relies on allocating sites in the Green Belt. This issue is strategic as it relates to sustainable development in a two-tier area and the development is a county matter<sup>7</sup>.

---

<sup>5</sup> Planning Practise Guidance for Duty to Cooperate. Paragraph: 010 Reference ID: 9-010-20140306.

<sup>6</sup> As set out in the Interim Surrey Local Strategic Statement (LSS)

<sup>7</sup> Section 33A(b) of the Planning and Compulsory Purchase Act 2004 (as amended)

### Identifying new waste management facilities

- 5.1.5 The Duty to Cooperate applies to strategic sites as well as strategic policies. The SWLP seeks to allocate sites for strategic waste management facilities which it defines as an increase in capacity greater than 20,000 tonnes per annum or part of a wider strategic network.
- 5.1.6 The strategy and land identified to meet Surrey's need relies on a sound understanding of issues at a district and borough level and the level of growth they are planning to meet. In particular, new settlements or strategic sites for housing or employment growth could result in the need for a new waste management facility.
- 5.1.7 This issue is considered strategic as it relates to sustainable development in a two-tier area and the development is a county matter<sup>7</sup>. Moreover, the county councils and the district and borough councils recognise the need to have a consistent approach to planning for infrastructure (including waste management facilities) to meet Surrey's needs<sup>6</sup>.

### Sustainable Construction

- 5.1.8 The issue of including sustainable construction policies of requirements to recycle building waste and to use recycled materials to minimise the amount of waste generated during construction in the draft Surrey Waste Local Plan is considered a strategic matter. Standard advice is provided in SCC responses to all consultations on major development proposals. However, there is a variation across the districts on how far this is taken on board in Local Plans and considered by district and borough development management teams.
- 5.1.9 This is considered to be a strategic matter as it relates to sustainable development in a two-tier area and would have a significant impact on county matters<sup>7</sup> including waste e.g. through managing construction waste and waste generated from new developments and minerals e.g. through encouraging use of recycled and secondary aggregates.

### Waste Data/Methodologies

- 5.1.10 Information on waste management capacity is needed to support the preparation of waste local plans and in monitoring adopted local plan policies. Currently, information on waste capacity is recognised as being difficult to obtain. Current approaches for estimating capacity in the South East have been discussed at previous meetings of the South East Waste Planning Advisory Group (SEWPAG) to recognise the limitations of these approaches.
- 5.1.11 Surrey County Council needs to undertake an assessment of the need for additional waste management infrastructure<sup>8</sup>. In order to do this Surrey County Council will need to ensure that they have obtained sufficient details on existing waste

---

<sup>8</sup> nPPG for Waste Paragraph: 022 Reference ID: 28-022-20141016

management facilities to enable them to plan effectively<sup>9</sup>. Survey information is one way in which Surrey County Council is able to identify these details.

- 5.1.12 In identifying the need for new waste management facilities Surrey County Council needs to have an understanding waste arisings from within the planning authority area, including imports and exports. In order to do this it is necessary to understand movement of waste between authorities. This is done using information from the Environment Agency (EA).
- 5.1.13 Waste is also a strategic issue which can be addressed effectively through close co-operation between waste planning authorities. One way in which Surrey County Council can demonstrate effective cooperation is in its involvement in SEWPAG activity intended to gather, evaluate and ensure consistency of data and information required to prepare Local Plans<sup>10</sup>.

#### Landfill

- 5.1.14 Non-inert landfill facilities in the South East of England are becoming increasingly scarce. There is a recognition by Waste Planning Authorities (WPAs) in the South East of England that this affects a number of authorities as there is an overall decline in the number of facilities and those facilities which continue to operate now accept waste from a wider area.
- 5.1.15 A lack of new facilities being allocated and/or developed, early closures of planned facilities, and changes to restoration practices which no longer encourage large amounts of infilling are some of the issues affecting the capacity of landfill in the South East of England. On the other hand, the amount of waste being sent to landfill has continued to decrease over the past ten years and number of local authorities are planning for little to no waste being sent to these facilities in the long term.
- 5.1.16 This is a complex issue that affects two or more authorities and hence meets the definition of a strategic issue. As a strategic issue non-inert landfill capacity in the South East of England should be dealt with under the Duty to Cooperate.

#### Waste from London

- 5.1.17 London is currently preparing a new Mayor's Spatial Development Strategy known as the London Plan. The London Plan sets the overarching framework for strategic planning in London. The London Plan includes information and policies which affect the movement of waste between London and other Waste Planning Authorities such as Surrey.
- 5.1.18 In order to ensure that strategic waste movements were taken into account and that strategies and policies in the London Plan were consistent with adjoining regional

---

<sup>9</sup> nPPG for Waste Paragraph: 024 Reference ID: 28-024-20141016

<sup>10</sup> nPPG for Waste Paragraph: 015 Reference ID: 28-015-20141016

waste planning areas collaboration between SEWPAG, East of England RTAB and the London Waste Planning Forum was proposed.

- 5.1.19 This collaboration is intended to complement the specific technical work of the regional Technical Advisory Boards (TABs) and the Wider South East Summit<sup>11</sup> in terms of its political dimension as well as consistent data and activities across boundaries and different technical issues.

## 5.2 Identifying DtC bodies

### Surrey District and Borough Councils

- 5.2.1 Close cooperation between district local planning authorities and county councils in two-tier local planning authority areas will be critical to ensure that both tiers are effective when planning for strategic matters such as waste<sup>12</sup>. The county council has worked closely with District and Borough councils throughout the preparation of the new SWLP to ensure that waste management is planned for in the most effective way.
- 5.2.2 Surrey County Council is working closely with district and borough councils to ensure that strategic issues e.g. Green Belt, sustainable construction and Site Allocations are addressed. To this effect officers, will continue to attend working groups which include district and borough authorities and to report on progress on the new SWLP regularly through these meetings.
- 5.2.3 Surrey County Council has visited or offered to visit each district and borough council to speak to both policy and development management officers during preparation of the new SWLP in order to receive feedback from officers on draft proposals and policies.
- 5.2.4 As well as engaging with district and borough authorities on the development of the new SWLP, Surrey County Council has contributed, and will continue to contribute, to the development of Local Plans being prepared by district and borough authorities.

### WPAs in the South East of England

- 5.2.5 The South East Waste Planning Advisory Group (SEWPAG) is a technical group of officers from WPAs in the South East of England including representatives from the Environment Agency, the waste industry and the environmental sector. This group meets quarterly.
- 5.2.6 SEWPAG is a key forum where progress and updates on the new SWLP are being discussed with adjoining WPAs. The SEWPAG memorandum of understanding (MoU) highlights two key aims for the group:

---

<sup>11</sup> <https://www.london.gov.uk/what-we-do/planning/who-we-work/mayors-engagement-wider-south-east>

<sup>12</sup> Planning Practise Guidance for Duty to Cooperate. Paragraph: 014 Reference ID: 9-014-20140306.

- To ensure that planned provision for waste management in the South East of England is co-ordinated.
- To ensure that the approach to waste planning throughout the South East is consistent between authorities.

5.2.7 SEWPAG has an important role in establishing and agreeing data on waste arisings and forecasts, existing waste management capacity and additional capacity requirements across the South East of England.

5.2.8 SEWPAG also provides an opportunity for member authorities to discuss common issues, review emerging waste plans within the South East and consider the impact of emerging waste management policies and decisions in member authority areas and adjoining areas especially London.

5.2.9 In addition to the Memorandum of Understanding SEWPAG is preparing a Statement of Common Ground (SoCG) for non-inert landfill. This will set out the baseline information for the planned provision of non-inert landfill across the South East and enable this issue to be dealt with strategically. The SoCG is in draft form but the preparation of this document, as carried out by Surrey County Council, has been recorded to demonstrate how the county council is engaging on this issue.

#### WPAs outside of the South East of England

5.2.10 Work on identifying WPAs that Surrey County Council needs to engage with on the new SWLP has taken place. A list has been compiled based on the waste imports and exports identified in the Environment Agency's Waste Data Interrogator (WDI).

5.2.11 Authorities with significant imports or exports to Surrey (Appendix 1) were identified using thresholds for consulting other Waste Planning Authorities under the Duty to Co-operate were agreed at the South East Waste Planning Advisory Group Meeting on 10 April 2014 (Table 1).

*Table 2 Thresholds for consulting other Waste Planning Authorities under the Duty to Co-operate*

Type of waste	Agreed Threshold
Non-hazardous waste	5,000 tonnes per annum
Hazardous waste	100 tonnes per annum
Inert wastes including excavation waste	10,000 tonnes per annum

5.2.12 Surrey County Council has contacted these WPAs to confirm that ongoing waste movements are likely and to update them, and seek their feedback, on progress of the new SWLP. Through formal consultation we will also invite these WPAs to comment on the emerging SWLP. The type and level of ongoing engagement will vary depending on the scale and complexity of any identified issues.

- 5.2.13 The county council has identified a need for ongoing engagement with London with respect to future waste movements. While Greater London continues to make significant progress towards being net self-sufficient there is still waste being sent from the Greater London area to Surrey. Surrey will continue to engage with London on these issues as the new Mayor's Spatial Development Strategy is developed.
- 5.2.14 To date, no specific issues on waste movements in regions outside of London or the South East of England have been raised.

#### Other relevant organisations

- 5.2.15 Other DtC Bodies have been identified as those prescribed in Regulation 4 of The Town and Country Planning (Local Planning) (England) Regulations 2012. These bodies will be formally consulted in regards to the preparation of the new SWLP. Those DtC bodies the county council has identified are included in Appendix 1.



## 6. Actions and outcomes under the Duty to Cooperate

### 6.1 Green Belt

Table 3 Actions and Outcomes of the Duty to Cooperate for the issue of Green Belt

Date	Action	Outcome	How this improves the plan	Date for review	Purpose for review
12/05/2017	<p>The county council looked at recent experience e.g. Hertfordshire and suggested possible options for discussion. The county council also welcomed any further suggestions for alternative options which may not have considered.</p> <p>Discussion was undertaken through PWG. It was suggested that any of these options might be appropriate depending on the sites and particular circumstances of the development proposed. In particular it was highlighted that allocation of sites in the SWLP does not necessarily mean that very special circumstances exist. Hence, it requires each application to be considered on its merits.</p>	<p>The outcome was that Surrey County Council would contact each borough individually regarding the sites allocated that are within the Green Belt. No Green Belt policy is required in the SWLP on the basis that there is clear national and local planning policy guidance. The effectiveness of this approach was discussed. Some guidance could be included with regard to Very Special Circumstances.</p>	<p>Comments from officers at district and borough councils were helpful in developing policies and approaches, with regards to Green Belt, which would be consistent with those in adopted or emerging district and borough level plans.</p>	07/07/2017	<p>Follow up on comments at next PWG meeting.</p>
07/07/2017	<p>At PWG on 7 July Surrey County Council provided an update on policy preparation was continuing for the waste local plan. In particular the issue of Green Belt.</p> <p>Previously, Surrey County Council were considering having supporting text for Green Belt and</p>	<p>Following the meeting, Surrey County Council requested informal comments from Surrey Districts and Boroughs prior to formal second stage Regulation 18 (Draft Plan) consultation in November.</p> <p>Email attachment: FW Informal consultation .msg</p>	<p>Comments from officers at district and borough councils were helpful in developing policies and approaches, with regards to Green Belt, which would be consistent with those in adopted or emerging district and borough level plans.</p>	07/02/2018	<p>Any further comments received following draft plan consultation.</p>

	<p>not a specific policy for applications. However, Surrey Development Management Officers emphasised the difficulties in dealing with applications in Green Belt and that current policy in the SWP2008 is very helpful, well used and should be retained.</p> <p>Surrey County Council drafted a policy based on current policy in the adopted plan taking account of comments made by Surrey Districts and Boroughs through previous consultation regarding Green Belt.</p> <p>In the July meeting of PWG Surrey County Council agreed to circulate to PWG the draft policy for informal comment.</p>				
--	--	--	--	--	--

## 6.2 Identifying new strategic waste management facilities

Table 4 Actions and Outcomes of the Duty to Cooperate for identifying new strategic waste management facilities

District/ Borough	Date	Description of Site/Issue	Action	Outcome	How this improves the plan	Date for review	Purpose for review
Elmbridge Borough Council	26/01/2017	<p>The borough Council raised concerns under the Issues and Options consultation about how sites would be selected for waste development and what sites were potentially being looked at within the borough.</p> <p>The issue was framed in terms of a recent planning application for a waste management facility at a site known as Weylands Treatment Works.</p> <p>Elmbridge were also undertaking a call for sites and considering a Green Belt assessment and these issues were discussed in view of the preparation and timetable for the new Surrey Waste Local Plan.</p>	<p>A meeting was held between Surrey County Council and Elmbridge Borough Council officers to discuss their response to the Issues and Options Consultation and to provide an update on the progress of plan preparation at Surrey County Council and at Elmbridge Borough Council and how these timetables could support strategic development across Surrey.</p>	<p>Both authorities agreed to exchange information as plans progress. Surrey County Council agreed to share information on site selection processes and sites being considered for waste management as early as possible. To give Elmbridge Borough Council officers a chance to provide comments and identify potential planning constraints e.g. planned provision of housing, Green Belt.</p>	<p>Comments from officers at district and borough councils were helpful in developing policies and approaches which would be consistent with those in adopted or emerging district and borough level plans.</p>	26/06/2017	Update on site selection process.

<b>District/ Borough</b>	<b>Date</b>	<b>Description of Site/Issue</b>	<b>Action</b>	<b>Outcome</b>	<b>How this improves the plan</b>	<b>Date for review</b>	<b>Purpose for review</b>
Elmbridge Borough Council	26/06/2017	Elmbridge Borough Council and Surrey County Council met to discuss the options for proposals at a site known as Weylands Treatment Works.	Discussions sought to determine what an appropriate response would be for the site in terms of the Surrey Waste Local Plan. Options included site allocation. As the site is in the Green Belt authorities also discussed a general approach to Green Belt issues in the Surrey Waste Local Plan.	It was agreed that the site known as Weylands could be considered for allocation in the Surrey Waste Local Plan. However, Green Belt issues would need to be taken into account. In addition, proposals should be in fitting with other nearby land uses. The current policy approach which reflects national policy on Very Special Circumstances was supported by Elmbridge Borough Council who were keen to see specific wording.	Comments from officers at district and borough councils were helpful in developing policies and approaches which would be consistent with those in adopted or emerging district and borough level plans.	07/02/2018	Any further comments received following draft plan consultation.
Guildford Borough Council	15/03/2017	A short list of sites Surrey County Council was considering following initial sieves was shared with Guildford Borough Council to get their view and identify any planning constraints which could affect delivery of the site(s).	Discussion was undertaken to determine if any factual information was missing from the Site Characterisation Reports. Discussions also considered if the sieving process was adequate and if necessary how this could be refined or improved.	Surrey County Council received additional information regarding the planning history of certain sites which the borough council were familiar with. There were discussions of how best to share information going forward with regards to any potential information and Surrey County Council agreed to share this	Comments from officers at district and borough councils were helpful in developing policies and approaches which would be consistent with those in adopted or emerging district and borough level plans.	07/02/2018	Any further comments received following draft plan consultation.

District/ Borough	Date	Description of Site/Issue	Action	Outcome	How this improves the plan	Date for review	Purpose for review
				information where possible through informal consultation.			
Guildford Borough Council	15/03/2017	Surrey County Council was seeking to include an appropriate policy approach to encouraging waste management uses within industrial estates and indeed on any land that is allocated for or has an existing industrial or storage use as in the current 2008 Waste Plan. A view was sought from Guildford Borough Council regarding this and looking at the most up to date Employment Land Needs Assessment.	Guildford Borough Council provided information on the updated Guildford Borough Employment Land Needs Assessment 2017 including the challenges with identifying industrial estates for waste use.	Surrey County Council received additional information regarding industrial land in Guildford and some of the challenges with allocating these areas as areas of search for a new Surrey Waste Local Plan.	Comments from officers at district and borough councils were helpful in developing policies and approaches which would be consistent with those in adopted or emerging district and borough level plans.	07/02/2018	Any further comments received following draft plan consultation.

District/ Borough	Date	Description of Site/Issue	Action	Outcome	How this improves the plan	Date for review	Purpose for review
Mole Valley District Council	25/04/2017	A short list of sites Surrey County Council was considering following initial sieves was shared with Mole Valley District Council to get their view and identify any planning constraints which could affect delivery of the site(s).	Discussion was undertaken to determine if any factual information was missing from the Site Characterisation Reports.	Surrey County Council received additional information regarding the planning history of certain sites which the borough council were familiar with.  There were discussions of how best to share information going forward with regards to any potential information and Surrey County Council agreed to share this information where possible through informal consultation.	Comments from officers at district and borough councils were helpful in developing policies and approaches which would be consistent with those in adopted or emerging district and borough level plans.	07/02/2018	Any further comments received following draft plan consultation.
Reigate & Banstead	16/01/2017	The site known as Copyhold Works is currently allocated for waste management development in the Surrey Waste Plan 2008 and is safeguarded for waste development.  There is also an existing landfill operation, where restoration is still ongoing, and the operator, Biffa Waste Services, still have obligations on the site.	A meeting was held to discuss the timescales for the preparation of the Reigate and Banstead Borough Council Development Management Plan and the Surrey Waste Local Plan.  Specifically discussions were held around the site known as Copyhold Works. A number of issues were identified:	Both authorities agreed to exchange information and relevant responses from stakeholders e.g. landfill operator. In particular Surrey County Council agreed to send technical information on monitoring and restoration to Reigate and Banstead Borough Council to assist officers in having the most update to date information to base their decision on.	Discussions with officers and the borough council were useful in helping to test the effectiveness of safeguarding policies and understand safeguarding issues at the local level.  Discussions also ensured that policies and proposals in emerging district and borough would be consistent with those in the emerging		

District/ Borough	Date	Description of Site/Issue	Action	Outcome	How this improves the plan	Date for review	Purpose for review
		However, the landowner are promoting the site for residential development through the Reigate and Banstead Borough Council Development Management Plan.	<ul style="list-style-type: none"> <li>• Traffic</li> <li>• Monitoring Boreholes</li> <li>• Long term management of the gas and leachate from the site</li> <li>• Possibility of landfill lifespan extension</li> </ul>	Going forward Surrey County Council agreed to send the suitable land scoping statement, which sets out how sites for waste management development are likely to be allocated, as soon as possible in order to allow for officers at the borough council to provide their opinions about the suitability of sites for waste uses.	Surrey Waste Local Plan.		
Reigate & Banstead	25/10/2017	Safeguarding issues were identified arising from the proposed allocation of residential development on the former Copyhold works allocated in the Surrey Waste Plan 2008 and adjacent to the operational Patteson Court Landfill site.	<p>A meeting was held at Patteson Court to support the development of the Reigate &amp; Banstead Borough Local Plan.</p> <p>Specifically the meeting focused on the potential impacts and possible mitigation of impacts arising from the operational landfill at Patteson Court.</p> <p>Two aspects in particular were covered:</p>	The county council facilitated better understanding of the environmental impacts of the operational landfill. While the county council were able to better understand the aspirations of the landowner of the Copyhold site for the preparation of the new Surrey Waste Local Plan.	This helps to safeguard the efficient operation of the existing landfill site which is considered an important strategic facility being one of the only non-inert landfill operations in Surrey.	07/02/18	Any further comments received following draft plan consultation.

District/ Borough	Date	Description of Site/Issue	Action	Outcome	How this improves the plan	Date for review	Purpose for review
			<p>i) the phasing of the residential development</p> <p>ii) detailed design of residential development</p> <p>This meeting included Biffa and Copyhold landowners so that all parties who had an interest in the site were able to present their views.</p>				
Spelthorne Borough Council	11/05/2017	A short list of sites Surrey County Council was considering following initial sieves was shared with the borough council to get their view and identify any planning constraints which could affect delivery of the site.	Discussion was undertaken to determine if any factual information was missing from the Site Characterisation Reports. In addition the status of current planning permissions and planning applications in Spelthorne were discussed to ensure that the evidence base was up to date and accurately reflected officer's understanding of the sites.	There were discussions of how best to share information going forward with regards to any potential information and Surrey County Council agreed to share this information where possible through informal consultation.	<p>Discussions with officers and the borough council were useful in helping to test the effectiveness of safeguarding policies and understand safeguarding issues at the local level.</p> <p>Discussions also ensured that policies and proposals in emerging district and borough would be consistent with those in the emerging Surrey Waste Local Plan.</p>	07/02/2018	Any further comments received following draft plan consultation.



District/ Borough	Date	Description of Site/Issue	Action	Outcome	How this improves the plan	Date for review	Purpose for review
Woking Borough Council	08/06/2017	<p>Part of the area of the proposed safeguarded housing site comprises a community recycling centre (CRC). To the east of this facility is a waste site allocated in the Surrey Waste Local Plan 2008 on an old landfill site. The future need for this site will be considered in the context of the emerging Surrey Waste Local Plan.</p> <p>As the plan progresses we will be in a clearer position with regard the continued need for this land to be identified as a potential waste management site. In response to the search for suitable land carried out as part of the Issues and Options Consultation, Surrey County Council received confirmation that the land owner wished the site to remain as</p>	<p>The authorities met to discuss how the area known as Martyrs Lane will be progressed through both the Woking Sites Development Plan Document and the Surrey Waste Local Plan to ensure that there is no conflict between the two Local Plans.</p> <p>Discussions identified key dates in plan preparation and how the site should be considered as plans were being prepared concurrently. There was a need for both authorities to continue to provide updates on any key decisions as progress is made in plan preparation. This was considered to be especially important in respect of any upcoming consultations.</p>	<p>It was agreed that Surrey County Council would respect decision by the borough council regarding the use of the site for housing when a decision was made. Until a decision had been made Surrey County Council would continue to promote the site in the Surrey Waste Local Plan.</p>	<p>Comments from officers at district and borough councils were helpful in developing policies and approaches which would be consistent with those in adopted or emerging district and borough level plans.</p>	29/11/2017	<p>Update from Woking Borough Council Committee processes.</p>

District/ Borough	Date	Description of Site/Issue	Action	Outcome	How this improves the plan	Date for review	Purpose for review
		a potential waste management site.					
Woking Borough Council	27/07/2017	<p>Days Aggregates raised concerns over potential residential development encroaching on rail depots and wharves noting that new residential development can impact on rail depots and their operation e.g. through additional expansion not being considered or noise sensitive receptors in close proximity which can result in issues.</p> <p>This was considered to be a potential issue in the Woking Sites Development Plan Document but which could be addressed through appropriate design which would minimise future noise/dust issues.</p>	<p>A meeting was held between officers from Surrey County Council and the borough council as well as representatives from Days Aggregates to discuss how safeguarding issues raised could be taken into account in the Regulation 19 stage of the Sites Development Plan Document.</p> <p>It was agreed that Surrey County Council and Days Aggregates should respond under the formal consultation for the boroughs Sites Development Plan Document.</p>	Woking provided an update on their revised Working Group Meeting.	<p>Discussions with officers and the borough council were useful in helping to test the effectiveness of safeguarding policies and understand safeguarding issues at the local level.</p> <p>Discussions also ensured that policies and proposals in emerging district and borough would be consistent with those in the emerging Surrey Waste Local Plan.</p>	07/02/2018	Any further comments received following draft plan consultation.

### 6.3 Sustainable construction

Table 5 Actions and Outcomes of the Duty to Cooperate for the issue of sustainable construction

Date	Action	Outcome	How this improves the plan	Date for review	Purpose for review
12/05/2017	Discussion was undertaken through PWG with regards to whether the draft Surrey Waste Local Plan should include a construction policy as this is related to development management planning at district and borough level.	<p>It was agreed at PWG that development management teams at districts and boroughs should have regard to policies in the Surrey Waste Local Plan on issues relating site waste management requirements and therefore it was reasonable to have a hook and conformity between both the county level and district or borough level plans.</p> <p>The discussion recognised that regardless of policies in local plans, there is no reason why development management officers should not have regard to the Surrey Waste Local Plan policy on this matter.</p>	Comments from officers at district and borough councils were helpful in developing policies and approaches, with regards to sustainable construction, which would be consistent with those in adopted or emerging district and borough level plans.	07/02/2018	Any further comments received following draft plan consultation.

## 6.4 Waste Data/Methodologies

Table 6 Actions and Outcomes of the Duty to Cooperate for the issue of waste data

Date	Action	Outcome	How this improves the plan	Date for review	Purpose for review
18/07/2016	A shared approach to surveying waste operators undertaken by West Berkshire and Surrey in 2015 had been successful. Given the need for waste capacity information and the benefits identified with a consistent approach across the South East a collective approach for surveying Waste Operators across the South East was proposed.	The group agreed that authorities would, where resources permitted, undertake a survey of all Waste Operators across the South East. This would be sent out with a cover letter from SEWPAG as a group.	Having a strong understanding of waste capacity in the plan area is important to ensure that Surrey County Council is able to plan for the type and amount of waste management facilities needed. Having a better understanding of waste capacity in the South East recognises that waste is a strategic issue and that waste will travel across local authority boundaries. Having better information allows Surrey County Council to work with adjoining authorities to identify any wider needs for waste management facilities.	31/01/2017	Review detailed arrangements for carrying out the work required for collecting evidence in a consistent way.
31/01/2017	Letters sent out Jan 2017 to Waste Authorities who were considered to have strategic imports or exports of waste from/to Surrey based on data contained in the WDI from 2013, 2014 and 2015.	A number of Waste Planning Authorities responded.	Having a strong understanding of waste capacity in the plan area is important to ensure that Surrey County Council is able to plan for the type and amount of waste management facilities needed. Having a better understanding of waste capacity in the South East recognises that waste is a strategic issue and that waste will travel across local authority boundaries.	30/09/2017	New information from the Environment Agency is likely to be available. This information should be used to update information on waste movements.
31/01/2017	Several authorities e.g. Surrey and West Berkshire already undertake annual surveys of Waste Operators. It was suggested that SEWPAG could undertake this as a wider	SEWPAG discussed the template forms, authority examples, and the possibility of adopting forms already in use. The group agreed to work	Having a strong understanding of waste capacity in the plan area is important to ensure that Surrey County Council is able to plan for the type and amount of waste	11/10/2017	To evaluate how successful the process of collecting information was and discuss the findings.

survey in order to encourage collection of information in a consistent way.	towards a common form and submission timetable.	management facilities needed.  Having better information allows Surrey County Council to work with adjoining authorities to identify any wider needs for waste management facilities.	To identify any lessons learnt and agree how best to collate the information.
---	---	---	---

## 6.5 Landfill

Table 7 Actions and Outcomes of the Duty to Cooperate for the issue of landfill

Date	Action	Outcome	How this improves the plan	Date for review	Purpose for review
31/01/2017	The issues of non-inert landfill was discussed with reference to the current SEWPAG Memorandum of Understanding. SEWPAG Authorities gave a summary of landfill capacity within their plan areas and broad issues were discussed.	There were minor changes to the SEWPAG Memorandum of Understanding agreed. In addition, it was agreed that authorities would share examples of best practice from adopted plans.	The outcome supports a common approach to dealing with landfill across WPAs in the South East of England.  The consistent approach to planning for landfill should be used when planning for these types of facilities in Surrey.	24/04/2017	To discuss baseline information e.g. capacity for planning for non-inert landfill in the South East of England.
24/04/2017	Surrey agreed to draft Statement of Common Ground (SoCG) for non-inert landfill. The template provided would then be completed by other SEWPAG authorities in order to build a regional picture of non-inert landfill in the South East.	General agreement for joint-working on the issue of non-inert landfill.	The outcome supports a common approach to dealing with landfill across WPAs in the South East of England.  The consistent approach to planning for landfill should be used when planning for these types of facilities in Surrey.	13/07/2017	The draft SoCG will be reviewed at the next SEWPAG meeting.  The review will focus on the format and structure of the statement and how and where information can be found to support

					authorities in planning for non-inert landfill.
13/07/2017	Surrey provided an update on the progress of preparing a Statement of Common Ground (SoCG) on Non-inert landfill.	<p>Following the meeting SEWPAG authorities were asked to contribute towards building a shared evidence base to support joint working.</p> <p>A number of authorities provided comments and factual updates to support the approach to producing a SoCG for non-inert landfill.</p>	<p>The outcome supports a common approach to dealing with landfill across WPAs in the South East of England.</p> <p>The consistent approach to planning for landfill should be used when planning for these types of facilities in Surrey.</p>	11/10/2017	<p>The draft Statement of Common Ground (SoCG) will be updated and reviewed at the next SEWPAG meeting. The review will focus on collating and updating technical information which will be important in assessing policy options.</p> <p>The review will also start to look at policy approaches which could be shared between authorities in the South East of England.</p>
11/10/2017	<p>Surrey provided a draft Statement of Common Ground (SoCG) on Non-inert landfill for discussion at the meeting.</p> <p>Discussion was held on how the outcome, a consistent approach to planning for landfill in the South East, can be achieved and what the best mechanism for this is.</p> <p>Factual clarifications were also sought from parties on the draft.</p>	<p>it was agreed that the signed MoU sets the approach for how WPAs in the South East of England will approach the issue of non-inert landfill. The purpose of the SoCG should be on providing technical baseline information to monitor and report on this approach.</p> <p>There were changes suggested to the text and layout of the SoCG.</p> <p>There was a further action for WPAs to provide any updates to technical information.</p>	<p>The outcome supports a common approach to dealing with landfill across WPAs in the South East of England.</p> <p>The consistent approach to planning for landfill should be used when planning for these types of facilities in Surrey.</p>	11/10/2017	<p>The draft Statement of Common Ground (SoCG) will be updated and reviewed at the next SEWPAG meeting. The review will focus on collating and updating technical information which will be important in assessing policy options.</p> <p>The review will also start to look at policy</p>

					approaches which could be shared between authorities in the South East of England.
--	--	--	--	--	--

## 6.6 Waste from London

*Table 8 Actions and Outcomes of the Duty to Cooperate for the issue of waste from London*

<b>Date</b>	<b>Action</b>	<b>Outcome</b>	<b>How this improves the plan</b>	<b>Date for review</b>	<b>Purpose for review</b>
19/06/2017	Information on imports and exports was discussed and the need for this information to be provided to WPAs in the WSE in order to enable effective planning.	<p>There was support for further information to provide a consistent set of information for reporting of waste arising in London and exports from London to the WSE. In particular a need was identified for greater awareness of C, D &amp; E waste being exported from London and how to deal with this sustainably.</p> <p>SEWPAG and East of England RTAB are undertaking research on landfill sites, which will inform the London Plan. This is being progressed through the Landfill Issue.</p>	Discussions were helpful in providing information to support policies and approaches with respect to managing Surrey's waste. These discussions helped create consistency between the Surrey Waste Local Plan and the emerging London Plan.	30/11/2017	Publication of the draft London Plan consultation.

## 7. Other Engagement

### 7.1 Involving Elected Members

- 7.1.1 National Planning Practice Guidance states that local planning authority councillors play a key role in discussion, negotiation and action to ensure effective planning for strategic matters in their Local Plans<sup>13</sup>. It is important that Elected Members are involved in plan making at a strategic level.
- 7.1.2 The preparation of the new SWLP includes member input from a Member Reference Group (MRG) who act as a critical friend and provide a level of scrutiny. The MRG includes elected members from a mix of spatial and political backgrounds.
- 7.1.3 In addition, the portfolio holder for Planning and Development has actively engaged with other members and councillors to ensure that they are aware of the activities being undertaken as part of preparing the new Surrey Waste Local Plan.

### 7.2 Engagement outside the DtC

- 7.2.1 Surrey County Council, as the WPA, recognises that there are other bodies not covered by the DtC. Engagement with other organisations including LEPs, infrastructure providers, environmental bodies, developers and existing waste operators is essential to delivering the new SWLP. While these organisations are not covered by the DtC we will still engage with them through formal consultation and discussions on specific issues where required.
- 7.2.2 Surrey County Council will also engage internally with the Waste Development Group and Waste Operations Group particularly around the issue of household waste. This will be done through the Waste Group & Planning Liaison meeting held bi-monthly and ongoing discussions. This will be particularly relevant for issues such as Community Recycling Centres.
- 7.2.3 The NPPF highlights the importance of engagement with our communities in plan-making and states that: “Early and meaningful engagement and collaboration with neighbourhoods, local organisations and businesses is essential”. While the DtC does not extend to communities, Local Planning Authorities are required to produce a Statement of Community Involvement (SCI)<sup>14</sup> that sets out how and when communities and other stakeholders can be involved in the content of new planning policy documents. Surrey County Council adopted a revised SCI in May 2015<sup>15</sup>.

---

<sup>13</sup> Planning Practise Guidance for Duty to Cooperate. Paragraph: 003 Reference ID: 9-003-20140306

<sup>14</sup> Under section 18 (Part 1) of the Planning and Compulsory Purchase Act 2004

<sup>15</sup> <https://www.surreycc.gov.uk/environment-housing-and-planning/minerals-and-waste-policies-and-plans/surrey-statement-of-community-involvement>



## 8. Next Steps

### 8.1 Draft Plan Consultation

- 8.1.1 This DtC Statement has been prepared alongside the draft version of the new Surrey Waste Local Plan which outlines the actions and outcomes undertaken by Surrey County Council to meet its Duty to Cooperate. The DtC Statement also reports on the outcomes of those actions and how they have contributed to effective planning policies.
- 8.1.2 Surrey County Council will consult on this version of the DtC Statement as part of the Draft Plan Consultation which will be carried out between 1 November 2017 and 7 February 2018.

### 8.2 Ongoing engagement

- 8.2.1 In developing a new Surrey Waste Local Plan, Surrey County Council, as the Waste Planning Authority, has a statutory duty to “engage constructively, actively and on an ongoing basis” with other relevant organisations on cross boundary strategic matters in order to maximise the effectiveness of plan preparation.
- 8.2.2 Surrey County Council will continue to engage The DtC Statement should be regarded as a ‘living document’ that will be updated as new issues arise or different bodies need to be involved in discussions.

## Appendix 1 – Relevant Authorities

Table 9 Adjoining Authorities and Surrey Districts and Boroughs

<b>Authority</b>	<b>Relevance</b>
Elmbridge Borough Council	Surrey District or Borough
Epsom and Ewell Borough Council	Surrey District or Borough
Guildford Borough Council	Surrey District or Borough
Mole Valley District Council	Surrey District or Borough
Reigate and Banstead Borough Council	Surrey District or Borough
Runnymede Borough Council	Surrey District or Borough
Spelthorne Borough Council	Surrey District or Borough
Surrey Heath Borough Council	Surrey District or Borough
Tandridge District Council	Surrey District or Borough
Waverley Borough Council	Surrey District or Borough
Woking Borough Council	Surrey District or Borough
Crawley Borough Council	Adjoining Authority
Horsham District Council	Adjoining Authority
Chichester District Council	Adjoining Authority
East Hampshire District Council	Adjoining Authority
Hart District Council	Adjoining Authority
Rushmoor Borough Council	Adjoining Authority
South Buckinghamshire District Council	Adjoining Authority
Sevenoaks District Council	Adjoining Authority
Wealden District Council	Adjoining Authority
London Borough of Richmond Upon Thames	Adjoining Authority
The Royal Borough of Kingston Upon Thames	Adjoining Authority
Sutton Borough Council	Adjoining Authority
Croydon Borough Council	Adjoining Authority

Bromley Borough Council	Adjoining Authority
Hounslow Borough Council	Adjoining Authority
Hillingdon Borough Council	Adjoining Authority
Bracknell Forest Council	SEWPAG Authority
Brighton & Hove Council	SEWPAG Authority
Buckinghamshire County Council	SEWPAG Authority
East Sussex County Council	SEWPAG Authority
Hampshire County Council (incorporating Southampton City, Portsmouth City and New Forest National Park Waste Planning Authorities)	SEWPAG Authority
Isle of Wight Council	SEWPAG Authority
Kent County Council	SEWPAG Authority
Medway Council	SEWPAG Authority
Milton Keynes Council	SEWPAG Authority
Oxfordshire County Council	SEWPAG Authority
Reading Council	SEWPAG Authority
Royal Borough of Windsor and Maidenhead	SEWPAG Authority
Slough Council	SEWPAG Authority
South Downs National Park Authority	SEWPAG Authority
West Berkshire Council	SEWPAG Authority
West Sussex County Council	SEWPAG Authority
Wokingham Council	SEWPAG Authority

*Table 10 Other DtC Bodies*

<b>Authority</b>	<b>Relevance</b>
The Environment Agency	National Bodies and the Mayor of London
Historic England	National Bodies and the Mayor of London

Natural England	National Bodies and the Mayor of London
The Civil Aviation Authority	National Bodies and the Mayor of London
The Homes and Communities Agency	National Bodies and the Mayor of London
The Marine Management Organisation	National Bodies and the Mayor of London
Mayor of London	National Bodies and the Mayor of London
The Office of Rail Regulation	National Bodies and the Mayor of London
North West Surrey CCG	Clinical Commissioning Group
Guildford & Waverley CCG	Clinical Commissioning Group
Surrey Heath CCG	Clinical Commissioning Group
East Surrey CCG	Clinical Commissioning Group
Surrey Downs CCG	Clinical Commissioning Group
North East Hampshire & Farnham CCG	Clinical Commissioning Group
Transport for London	Adjoining Integrated Transport Authority
Network Rail	Integrated Transport Authority
Highways England	Highway Authority
Surrey County Council	Highway Authority
Coast to Capital	Local Enterprise Partnership
Enterprise M3	Local Enterprise Partnership
Surrey Wildlife Trust	Local Nature Partnership

Authority	HIC		Inert		Hazardous	
	Imports	Exports	Imports	Exports	Imports	Exports
Berkshire	0	0	16,000	0	0	0
Bexley	0	11,000	0	1,000	0	0
Birmingham City	0	6,000	0	0	0	0
Bracknell Forest	12,000	0	8,000	22,000	0	0
Brighton and Hove	10,000	0	4,000	13,000	0	0
Buckinghamshire	3,000	51,000	4,000	4,000	2,000	0
City of London	1,000	0	38,000	0	0	0
Croydon	19,000	1,000	38,000	9,000	0	0
Cumbria	0	0	14,000	0	0	0
East Sussex	23,000	10,000	2,000	5,000	0	2,000
Enfield	0	35,000	0	0	0	0
Greenwich	54,000	0	1,000	8,000	0	0
Hammersmith & Fulham	0	0	149,000	0	0	0
Hampshire	70,000	86,000	71,000	184,000	2,000	2,000
Hertfordshire	2,000	14,000	1,000	1,000	0	1,000

Hillingdon	0	8,000	84,000	64,000	0	0
Hounslow	14,000	62,000	66,000	2,000	3,000	0
Kensington & Chelsea	0	0	28,000	0	0	0
Kent	26,000	45,000	22,000	44,000	0	7,000
Kingston Upon Thames	0	0	35,000	15,000	0	0
Merton	12,000	36,000	13,000	2,000	0	0
Milton Keynes	0	26,000	0	0	0	0
Reading	3,000	0	5,000	12,000	0	0
Richmond Upon Thames	0	0	38,000	0	0	0
Slough	6,000	30,000	3,000	39,000	0	0
Sutton	4,000	4,000	11,000	2,000	0	0
Thurrock	0	45,000	0	1,000	0	0
Wandsworth	0	0	83,000	8,000	0	0
Warwickshire	0	6,000	0	0	0	0
West Berkshire	3,000	3,000	0	14,000	2,000	0
West Sussex	43,000	102,000	76,000	54,000	1,000	1,000
Windsor and Maidenhead	20,000	0	3,000	28,000	0	0