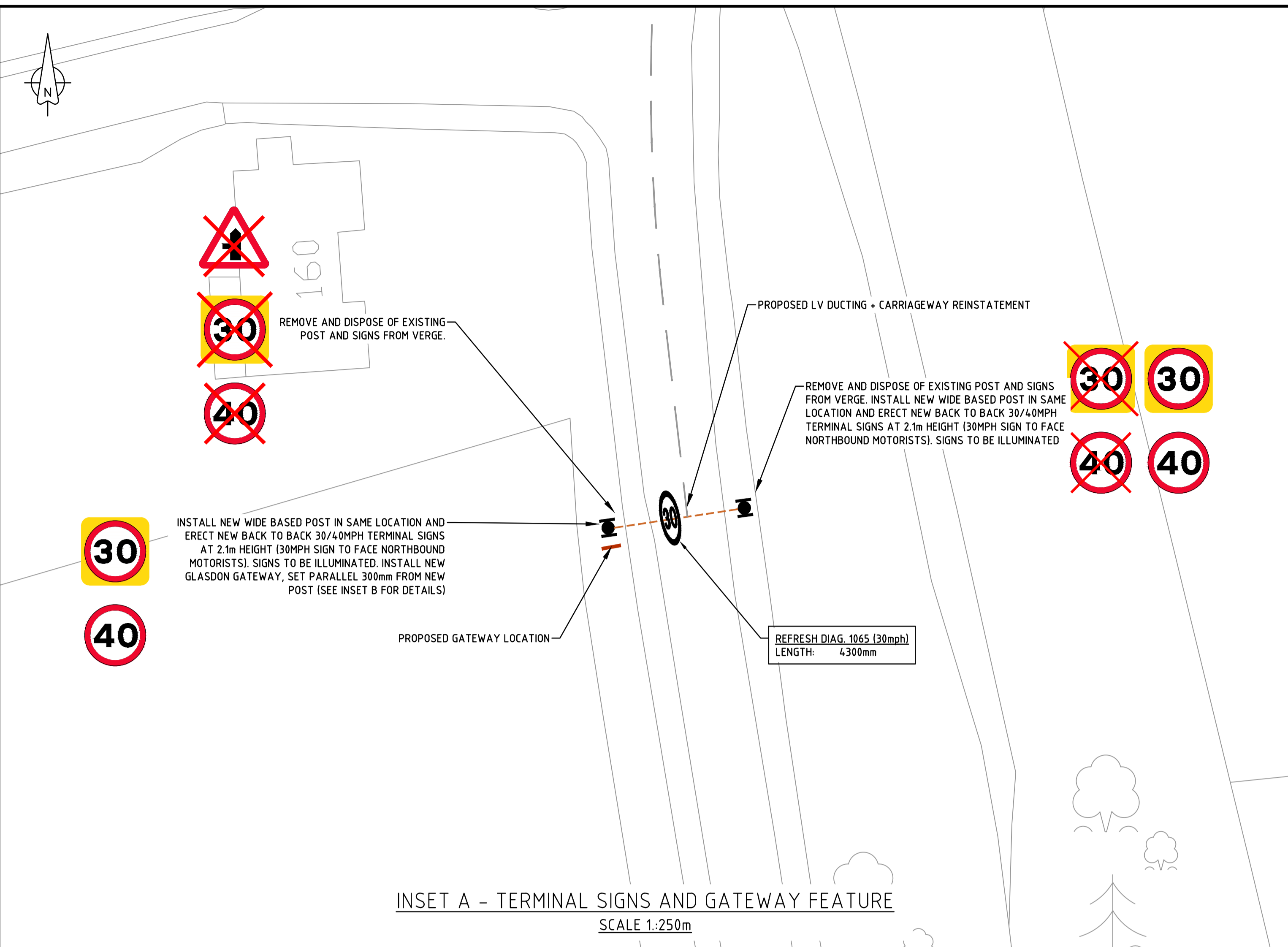
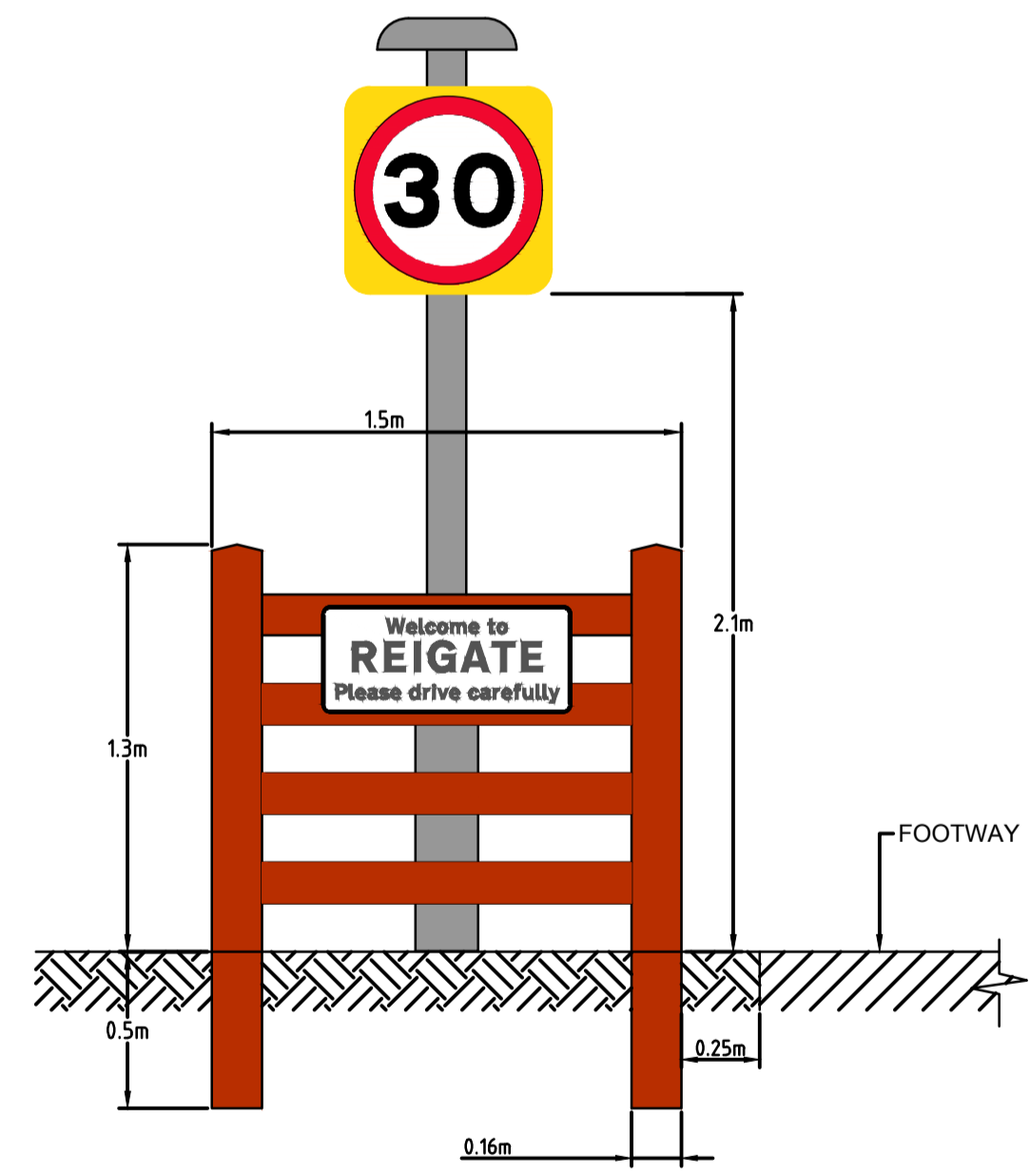


OVERVIEW
SCALE 1:1,250m



INSET A - TERMINAL SIGNS AND GATEWAY FEATURE
SCALE 1:250m



Scheme Ref.			
Sign Ref.	2402.1	x-height	70.0
Letter colour	BLACK	SIGN FACE	
Background	WHITE	Width	795mm
Border	BLACK	Height	340mm
Material	Class RA2 (12899-1:2007)	Area	0.27sq.m

Scheme Ref.			
Sign Ref.	670-30	x-height	100.0
Letter colour	N/A	SIGN FACE	
Background	YELLOW	Width	660mm
Border	N/A	Height	660mm
Material	Class RA2 (12899-1:2007)	Area	0.44m ²

Sign Reference	
670-40	
Height	600mm
Width	600mm
Area	0.28 m ²
Material	Class RA2 (12899-1:2007)
Mount Height	2100

INSET B - GATEWAY FEATURE

Notes

Rev.	Description	Drwn	Sig.	Date	Chkd	Sig.	Date	Appr	Sig.	Date

North Point	Project	Project	Project

Drawn by	Sig.	Date	Checked by	Sig.	Date	Approved by	Sig.	Date
SP	SP	SEPT 17	SP	SP	SEPT 17	JD	JD	SEPT 17

A217 REIGATE TO HORLEY (WHOLE ROUTE STUDY)
SITE No. 7 - A217 DOVERS GREEN ROAD, REIGATE
GENERAL ARRANGEMENT

SURREY COUNTY COUNCIL
Transport for Surrey

Project No. SP0028
Contract Sheet No. 07-001
Drawing No. -
Rev. -
Classification
DRAFT

SHEET 1 OF 1