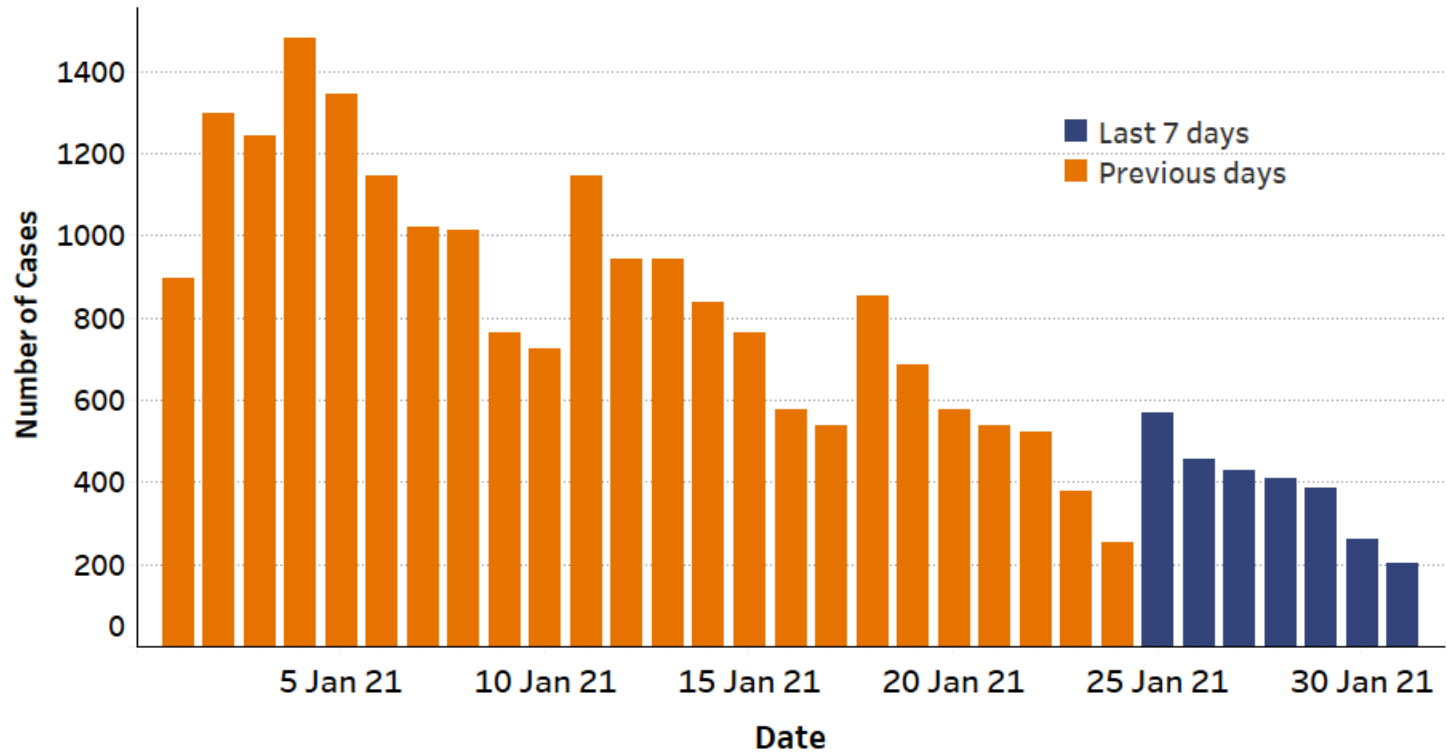


Surrey COVID-19 Cases

Publication Date:
Friday 5 February 2021



Daily Cases



Change from previous week**



New cases in last 7 days

2,713

Rate for the last 7 days*

226.8

Data shown for time period Monday 25 January 2021 to Sunday 31 January 2021

*Rate represents number of cases per 100,000 population for the last 7 days

**If there is an increase or decrease in cases that is less than 10% compared to the previous 7 days (18 January - 24 January) a grey arrow will indicate that the rate may have plateaued, but is not showing a significant rise or drop.

Change**		Cases (7 days)	Rate (7 days)
↓	Reigate and Banstead	470	316.0
↓	Spelthorne	292	292.5
↓	Tandridge	224	254.2
↓	Woking	251	249.0
↓	Epsom and Ewell	193	239.4
→	Runnymede	209	233.7
↓	Surrey Heath	196	219.5
↓	Guildford	303	203.4
↓	Waverley	217	171.8
↓	Mole Valley	149	170.8
↓	Elmbridge	209	152.8
↓	Surrey	2,713	226.8
↓	South East	20,868	227.3
↓	England	144,809	257.3

All data is publicly available. Data is shown by specimen date - reporting delays mean data can be incomplete for the most recent days. For this reason the data shown is for the seven-day period ending five days prior to the publication date. The rate is calculated daily by Surrey County Council Public Health data intelligence team using the ONS 2019 mid-year population estimates.

For more detail please refer to the Surrey COVID Intelligence Summary at www.surreycc.gov.uk/covidcases and coronavirus.data.gov.uk

Surrey Daily COVID Report

Publication Date: Friday 5 February 2021

All data is publicly available. Data is shown by Specimen Date and since these are incomplete for the most recent days, the period shown is for the seven day period ending five days prior to the publication date.

The rate is calculated daily by Surrey County Council Public Health Data Intelligence team using the ONS 2019 mid-year population estimates.

For more detail please refer to the [Surrey COVID Intelligence Summary](#) or the [Government Coronavirus Dashboard](#)

Date	Case
1 January 2021	895
2 January 2021	1,296
3 January 2021	1,244
4 January 2021	1,481
5 January 2021	1,344
6 January 2021	1,147
7 January 2021	1,022
8 January 2021	1,015
9 January 2021	764
10 January 2021	725
11 January 2021	1,145
12 January 2021	943
13 January 2021	942
14 January 2021	837
15 January 2021	764
16 January 2021	578
17 January 2021	539
18 January 2021	853
19 January 2021	687
20 January 2021	578
21 January 2021	537
22 January 2021	522
23 January 2021	377
24 January 2021	254
25 January 2021	568
26 January 2021	457
27 January 2021	428
28 January 2021	411
29 January 2021	386
30 January 2021	261
31 January 2021	202

Direction of change compared to previous 7 days (18 Jan – 24 Jan)	Area Name	Cases (7 days)	Rate (7 days)*
Decrease	Surrey	2,713	226.8

Data shown for time period Monday 25 January 2021 to Sunday 31 January 2021

*Rate represents number of cases per 100,000 population for the last 7 days

Direction of change compared to previous 7 days (18 Jan – 24 Jan)	Area Name	Cases (7 days)	Rate (7 days)*
Decrease	Reigate and Banstead	470	316.0
Decrease	Spelthorne	292	292.5
Decrease	Tandridge	224	254.2
Decrease	Woking	251	249.0
Decrease	Epsom and Ewell	193	239.4
No Change	Runnymede	209	233.7
Decrease	Surrey Heath	196	219.5
Decrease	Guildford	303	203.4
Decrease	Waverley	217	171.8
Decrease	Mole Valley	149	170.8
Decrease	Elmbridge	209	152.8
Decrease	Surrey	2,713	226.8
Decrease	South East	20,868	227.3
Decrease	England	144,809	257.3