

A photograph of a forest with a white paper sculpture. The sculpture consists of long, thin strips of paper that are draped and twisted around tree trunks, creating a flowing, abstract form. The background is a dense forest of trees and ferns, with sunlight filtering through the canopy.

CONTEMPORARY
ART IN THE SURREY
LANDSCAPE 2008

www.surreycc.gov.uk



Making Surrey a better place

SURREY is known for its accomplished painters and sculptors, writers and craftspeople. Artists who throughout history have drawn inspiration from the county's beautiful and unique landscape with its rolling hills, formal gardens and far reaching views.

This booklet follows local contemporary artists as they respond to specific locations across the surrey landscape. They explore ideas including the history of the land and the mark humans have made upon it.

These artists have been given the opportunity to produce site-specific artwork open to the public throughout **August and September, 2008**. In this year celebrating 50 years of Surrey's designation as an Area of Outstanding Natural Beauty, our contemporary artists celebrate and promote these often hidden away natural spaces.

Discover the artworks and locations for yourself. A detailed description of its location lies alongside each entry. The images you see are the artists' proposals, so may differ from the final installations.

A programme of talks, walks and workshops accompanies these projects. For up to date information, see **www.surreycc.gov.uk/arts**
Email: **sa.visual@surreycc.gov.uk** Call: **01483 757258**

Surrey Arts

Surrey County Council's arts service offers events and learning programmes in music, drama, dance and visual arts. It strives to improve access to the arts across all sections of the community, encouraging participation and creating opportunities for professional artists in Surrey.



Folly, Ali Clarke

SUSPENDED BENEATH a cluster of mature trees floats a contemporary folly. Ali Clarke has created this sculpture working alongside Art Matters, a local community mental health project. It makes reference to those historic structures in the landscape created for simple purposes like looking at a view, watching clouds or simply contemplation. This draws the viewer into an area that would normally be passed by, then encloses them and draws focus to their individual experience.

Site: *Folly* is located beneath a cluster of trees near the Millennium Stones on the North Downs Way at Gatton Park. From the Wray Lane car park, cross the road and follow the 'Discover Gatton Walk'. This walk is steep and muddy in parts. For those with access difficulties, contact Gatton Park on 01737 649066 for access to parking adjacent to the site.



Storytree, Jane Ponsford

JANE PONSFORD builds on her project, Papertrails where she worked on a series of site-specific works for the commons of Elmbridge and had a year-long residency at St. George's Church, Esher. Her aim is to highlight the particular beauties of a place at a particular time. Jane is inspired by structures and shapes found in nature. Her work is often ephemeral and delicate and involves repetitive, laborious processes, constructing sculptural forms made up of hundreds of near identical fragments.

Her *Storytree* installations are a result of local people's stories about how they came to this area, personal anecdotes or historical tales. See www.papertrails.org.uk for the times and locations of her 2008 installations.

ARTIST SHARON BAKER has created grass sculptures of human figures that seem to be submerged in the turf. Some have been mown and watered while others are left to grow wild or wither. These sculptures reflect Sharon's interest in our connection with nature and how we respond to the untamed part of ourselves. Sharon Baker has worked with children from Furzefield Primary School, Merstham discussing these themes and relating this to the human body.

Site: *Merge* is located beside the North Downs Way opposite the Millennium Stones at Gatton. From the Wray Lane car park, cross the road and follow the 'Discover Gatton Walk'. This walk is steep and muddy in parts. For those with access difficulties, contact Gatton Park on 01737 649066 for access to parking adjacent to the site.



Merge, Sharon Baker

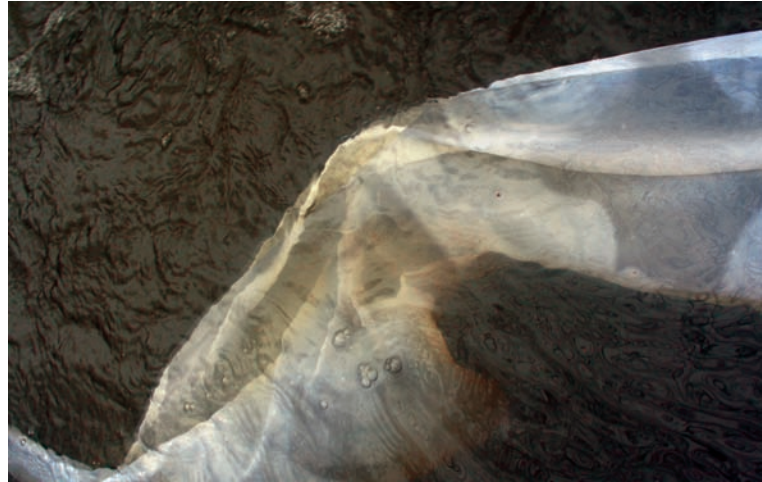
IN PARTNERSHIP with The National Trust, Sculptit, a local community arts organisation are launching a project at Winkworth Arboretum. *Painting with trees* will see the Sculptit Artists engaging with ten local communities to explore and be inspired by this wonderful local landscape. New work will be created that reflects the meaning of this landscape to visitors and those that live nearby. To launch this project and celebrate Sculptit's ten year anniversary, community artwork and workshops will be available on Heritage Weekend, the 13th and 14th September.

Site: Winkworth Arboretum is 2 miles south of Godalming on the East side of the B2130 and has a car park. Buses 42 and 44 from Godalming station pass nearby. An alternative car park is available for those with access difficulties, please ask at the information booth.



Painting with trees

FLORA GARE explores the movement of fabric in water and its reflective qualities with her *River Banners*. She takes inspiration from the history of local people and weaves these images into the banners submerged in the river Mole. These 'floating memories' form a history below the surface, the past submerged in the flow of restless movement. Flora engaged local children from St.Martins C of E Primary in creative workshops making banners learning silk painting techniques from textile artist, Dawn Dupree. These banners will hang alongside Flora's artwork from the bridge to the water. *River Banners* will be in place from 6th September. **Site:** The stepping stones can be found off the A24 just beyond the wooden bridge west of the stones.



River Banners, Flora Gare



Imprint, Angela Thames

THIS proposal by artist Angela Thames would have seen a giant tread pattern from a walking boot on the Mount in Guildford. Inspired by those iconic chalk images such as the Long Man of Wilmington in East Sussex, it acts as a reminder that this should be the only evidence left in the landscape after we have enjoyed being in our natural environment. This theme builds on a body of work by artist involving found objects in the landscape. Angela has worked with service users at Lockwood Day Centre in Guildford collecting their shoe tread patterns in creative workshops.

Site: A site is being sought for this artwork. Please check website for updates.

JONO RETALLICK has responded to the way we protect these Areas of Outstanding Natural Beauty and, in the case of the North Downs Way, used this land to protect our capital during the war. Through *Snail Trail*, sculptures based on the endangered desmoulin whorl snail species will be deployed within the pill boxes at Moor Park. Jono will engage with Creative Response, a local arts organisation working with vulnerable adults to create further artworks. Information on an activity programme is available from the Museum of Farnham.

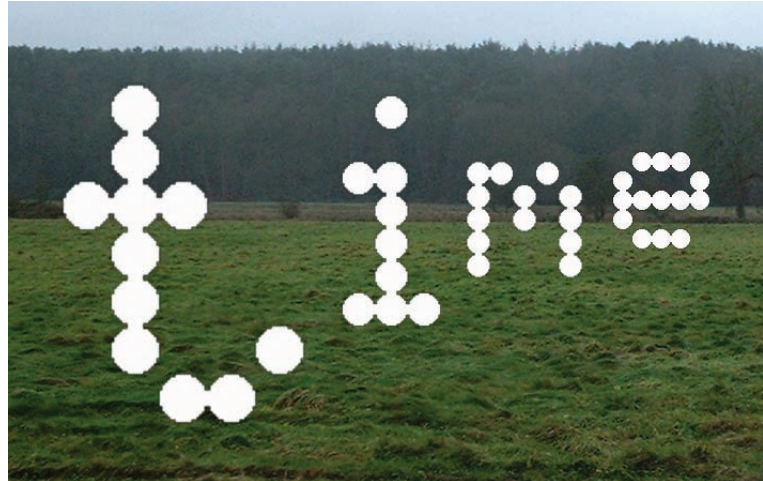
Site: *Snail Trail* is situated in the pill boxes along the Moor Park Heritage Trail from Moor Park House to Waverley Abbey. This can be reached on foot from the Shepherd and Flock roundabout or the small parking area at the Abbey.



Snail Trail, Jono Retallick

THIS PIECE evokes the changing historical significance of the Waverley Abbey landscape. Jonathan Parsons' *Archaic/Logical* consists of a large installation of 'floating' dot matrix letters. Each letter is placed directly behind the preceding one to form an arrangement that changes as the viewer walks past it, spelling out two different words. Jonathan will engage with Creative Response, a local arts organisation working with vulnerable adults to create further art works.

Site: *Archaic/Logical* is situated in the water meadow adjacent to Waverley Abbey. It can be reached along the Moor Park trail which contains thousands of years of history including the site of a Middle Stone Age Camp; a mysterious and ancient cave and the home and historical garden of Sir William Temple. It is 2 miles south of Farnham off the B3001.



Archaic Logical, Jonathan Parsons



WITH THANKS TO THE FOLLOWING ORGANISATIONS FOR THEIR VALUED SUPPORT

Mole Valley District Council, The National Trust, Surrey Hills, Surrey Wildlife Trust, Waverley Borough Council, English Heritage, The Christian Worldwide Revival, Gatton Park Education Trust, The Merstham Millennium Trust and Arts Council England.

Disclaimer: Whilst every care has been taken in compiling this guide, Surrey County Council cannot be held responsible for any variations, errors or omissions. For up to date information, please refer to www.surreycc.gov.uk/arts

What do you think? Let us know which artwork you visited and your feedback - sa.visual@surreycc.gov.uk